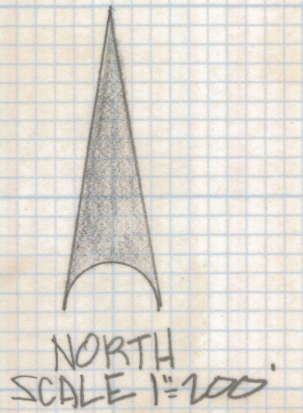


DISCLAIMER:

This unrecorded Record of Survey was donated to the City of Tucson. The City of Tucson provides this data for your personal use "as is." Additionally, the City of Tucson provides this information with the understanding that it is not guaranteed to be accurate, correct or complete and conclusions drawn from such information are the responsibility of the user.

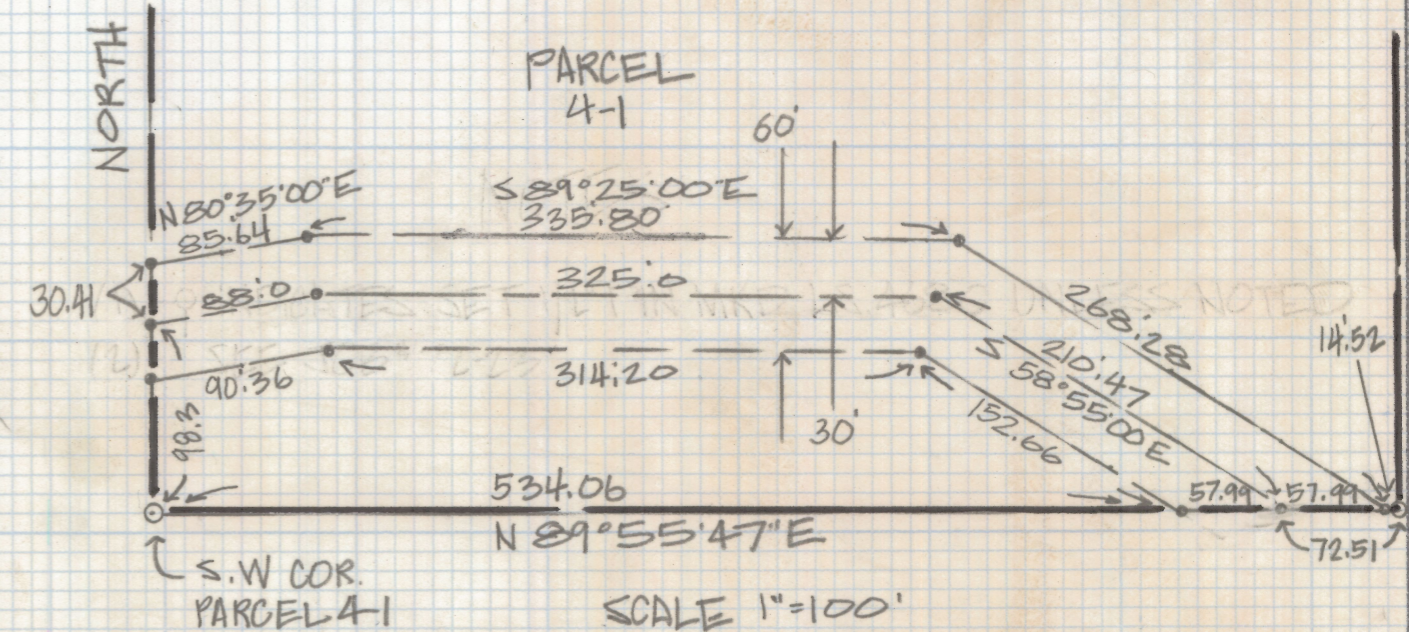
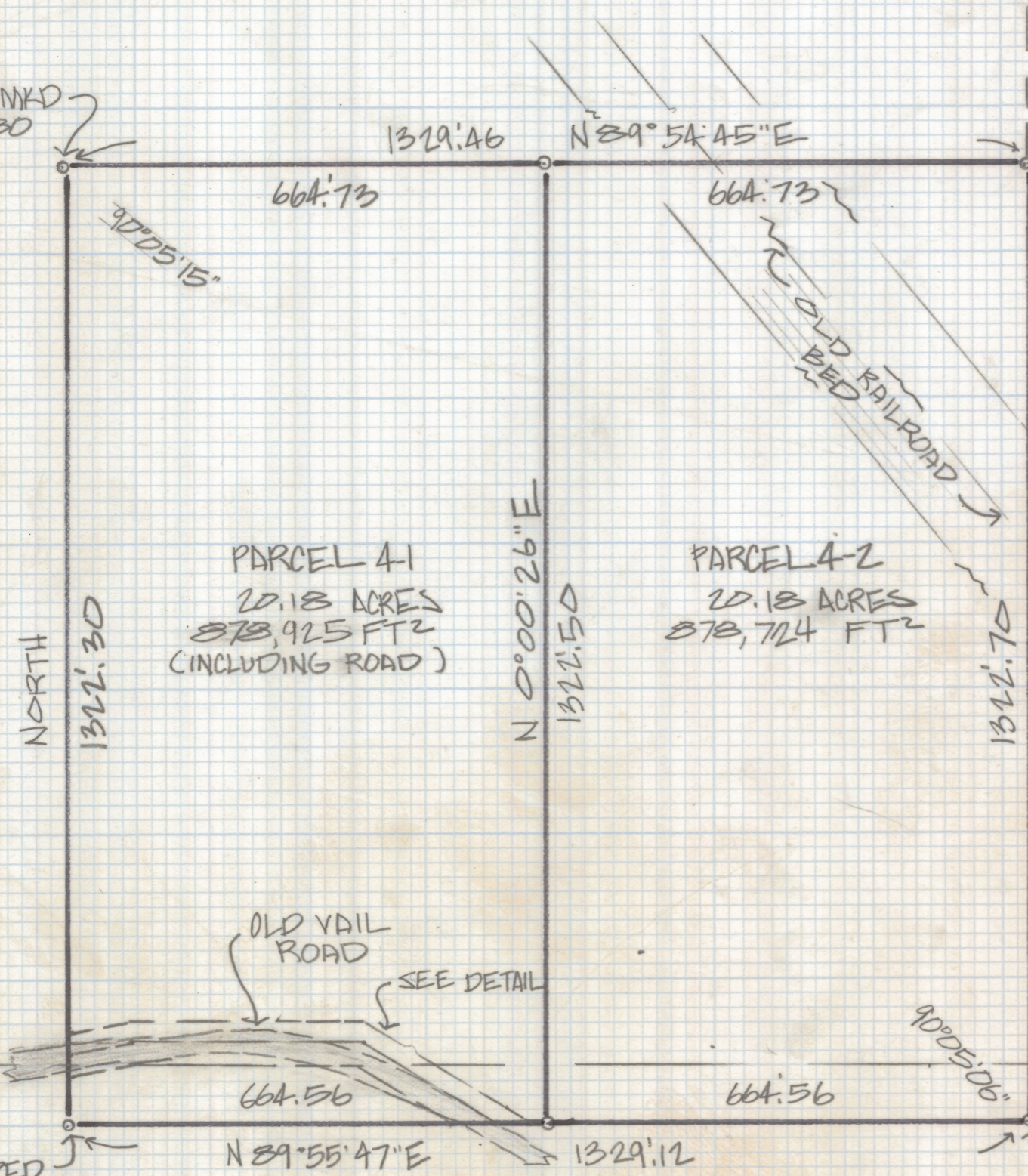
NOTES

- (1) INDICATES SET 1/2" PIN MKD L.S. 4680 UNLESS NOTED
- (2) SEE JOB # 72-23
- (3) NOT SET
- (4) ROAD AREA 37,400 FT² 0.86 AC
- (5) AREA SOUTH OF ROAD 37,240 FT²



1/2" AC.P. MKD L.S. 4680

1/2" AC.P. MKD L.S. 4680



SCALE 1"=100'
 DETAIL
 TUCSON-BISBEE STATE
 HIGHWAY (COLD VAIL RD)
 FEB 4, 1918

1/2" 3" CAPPED PIPE MKD 36/31
 6

1/2" 1" OPEN IRON PIPE

1/2" 1" OPEN IRON PIPE



RESULTS OF SURVEY

OF GOVERNMENT LOT 4 OF SECTION 31 TOWNSHIP 15 SOUTH OF RANGE 16 EAST GILA AND SALT RIVER BASE AND MERIDIAN PIMA COUNTY, ARIZONA

Z-2018-340
 ROBERT F. MELLEN
 REGISTERED LAND SURVEYOR
 TUCSON, ARIZONA
 JOB # 85-98