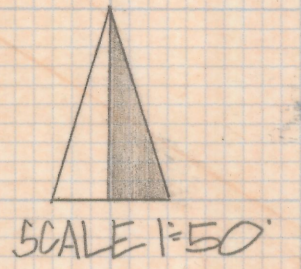


# **DISCLAIMER:**

**This unrecorded Record of Survey was donated to the City of Tucson. The City of Tucson provides this data for your personal use "as is." Additionally, the City of Tucson provides this information with the understanding that it is not guaranteed to be accurate, correct or complete and conclusions drawn from such information are the responsibility of the user.**

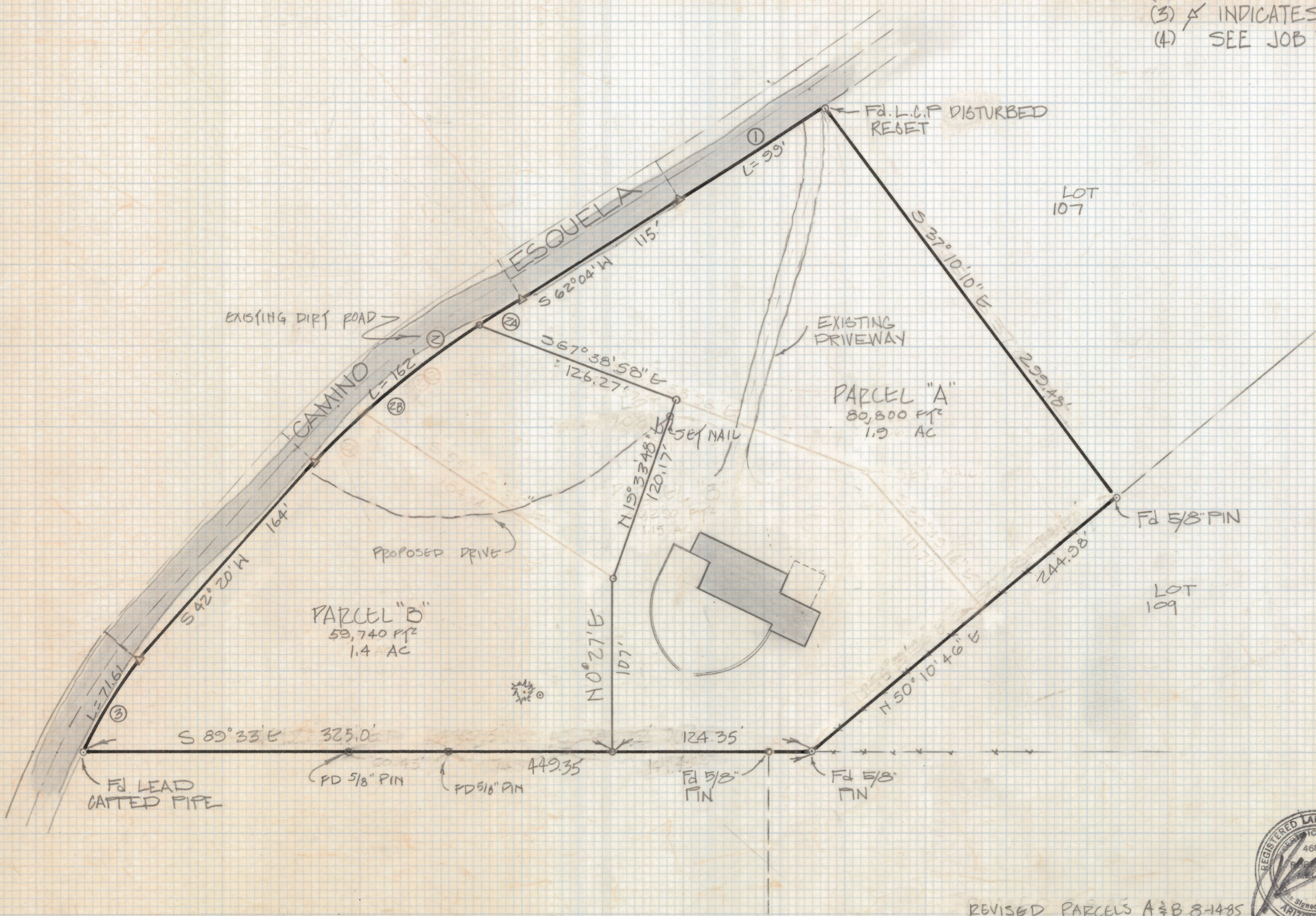


# RESULTS OF SURVEY

OF LOT 108 CATALINA FOOTHILLS ESTATES RECORDED IN BOOK 6 OF MAPS AND PLATS AT PAGE 57 IN THE OFFICE OF THE PIMA COUNTY RECORDER PIMA COUNTY ARIZONA

## NOTES

- (1) ○ INDICATES SET 1/2" FIN MKD L.S. 4680 UNLESS NOTED
- (2) SEE JOB # 81-73
- (3) △ INDICATES POINTS ON WEST LINE NOT SET.
- (4) SEE JOB # 83-101



NO	Δ	P	T	L	C
1	8° 48' 02"	644.53	49.6'	99'	98.9'
2	15° 44'	470.37	81.81'	162'	161.2'
2A	3° 39' 15"	470.37	15.01'	30.0"	29.99
2B	16° 04' 45"	470.37	66.44'	132.0'	131.57'
3	21° 06' 40"	194.36	36.22'	71.61'	71.21'



Z-2018-348  
 ROBERT F. MELLEN  
 REGISTERED LAND SURVEYOR  
 TUCSON ARIZONA  
 JOB # 85-108

REVISED PARCELS A & B 8-14-85