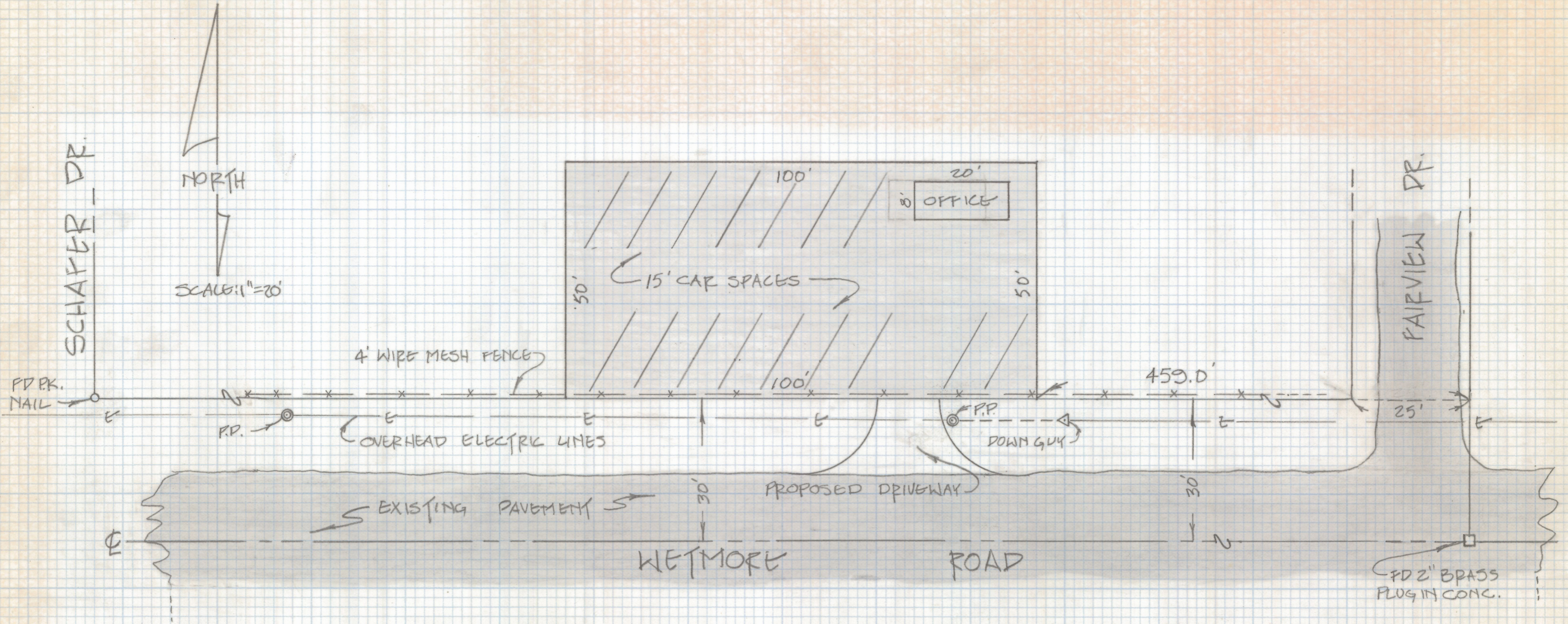


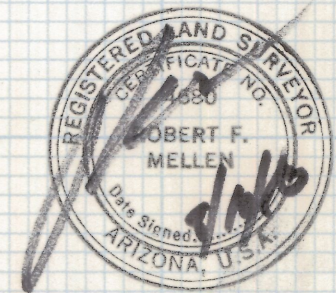
DISCLAIMER:

This unrecorded Record of Survey was donated to the City of Tucson. The City of Tucson provides this data for your personal use "as is." Additionally, the City of Tucson provides this information with the understanding that it is not guaranteed to be accurate, correct or complete and conclusions drawn from such information are the responsibility of the user.



PROPOSED USED CAR LOT

LOCATED WITHIN SOUTH 3/8 OF SOUTHEAST 1/4 OF
 NORTHWEST 1/4 OF SECTION 23, TOWNSHIP 13 SOUTH
 RANGE 13 EAST, GILA AND SALT RIVER BASE AND
 MERIDIAN, PIMA COUNTY, ARIZONA.



Z-2018-351
 ROBERT F. MELLEN
 REGISTERED LAND SURVEYOR
 TUCSON, ARIZONA
 JOB # 85-112