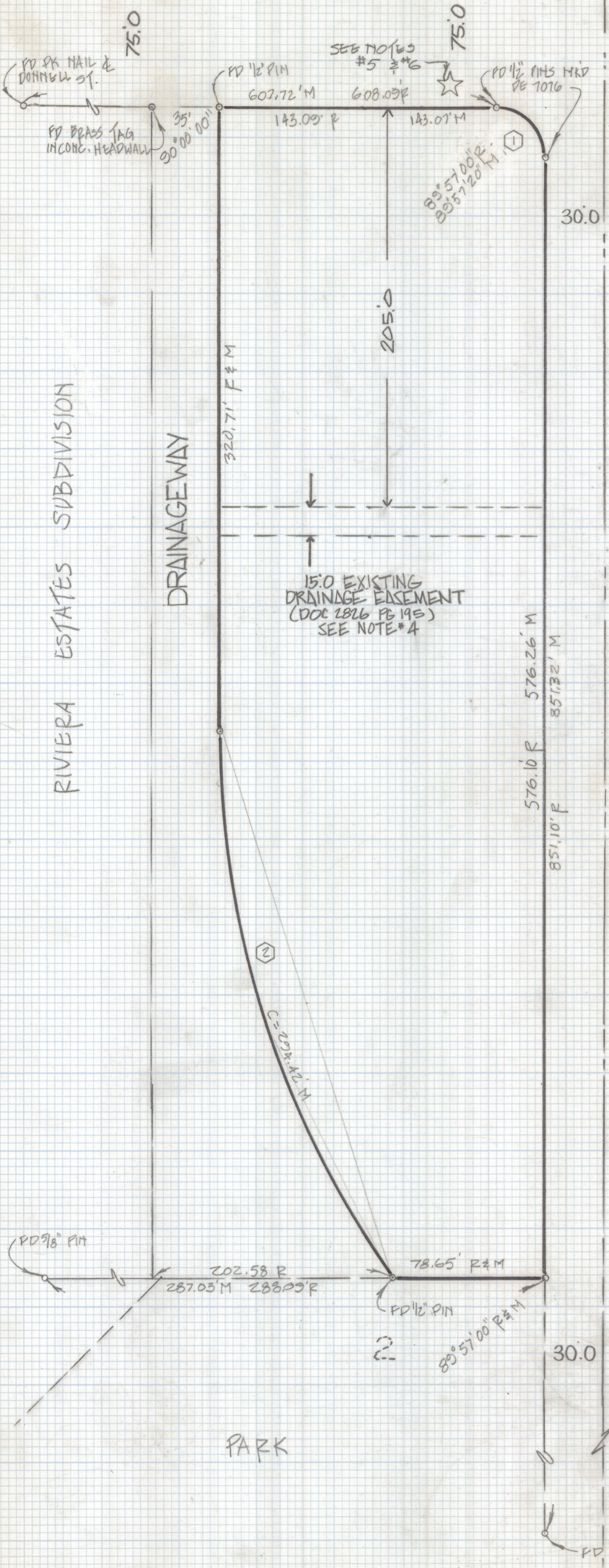
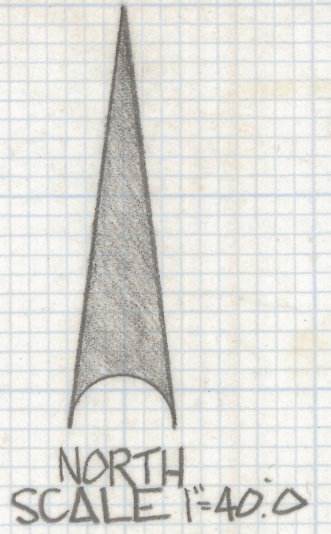


DISCLAIMER:

This unrecorded Record of Survey was donated to the City of Tucson. The City of Tucson provides this data for your personal use "as is." Additionally, the City of Tucson provides this information with the understanding that it is not guaranteed to be accurate, correct or complete and conclusions drawn from such information are the responsibility of the user.

BROADWAY BLVD



NOTES

- (1) P INDICATES SET 1/2" PIN MKD L.S. 4680 UNLESS NOTED
- (2) M- MEASURED
- (3) R- MAP OR DEED RECORD
- (4) SEE DRAWING OF DRAINAGE WAY EASEMENT CITY OF TUCSON PLAN N° S-65-7 (DOCKET 2826 PAGE 195)
- (5) ☆-SET ELEVATION ON TOP BOLT OF FIRE HYDRANT ELEV.=2997.91' CITY OF TUCSON DATUM
- (6) WE UNDERSTAND THAT THERE IS AN ELEVATION EQUATION ON THE PLANS BY BUCK LEWIS ENGINEERS- CAUTION SHOULD BE USED TO DETERMINE CORRECT ELEV.

CURVE DATA					
NO.	DELTA	RADIUS	LENGTH	TANGENT	CHORD
1	90° 03'	25.0'	39.23'	25.02'	35.37
2	35° 22' 57"	484.26'	299.05'	154.47'	294.32

RESULTS OF SURVEY

OF A PORTION OF BLOCK I OLD PUEBLO ESTATES RECORDED IN BOOK 9 OF MAPS AND FLATS AT PAGE 110 IN THE OFFICE OF THE PIMA COUNTY RECORDER PIMA COUNTY ARIZONA



Z-2018-358
 ROBERT F. MELLEN
 REGISTERED LAND SURVEYOR
 TUCSON ARIZONA
 JOB # 85-125