

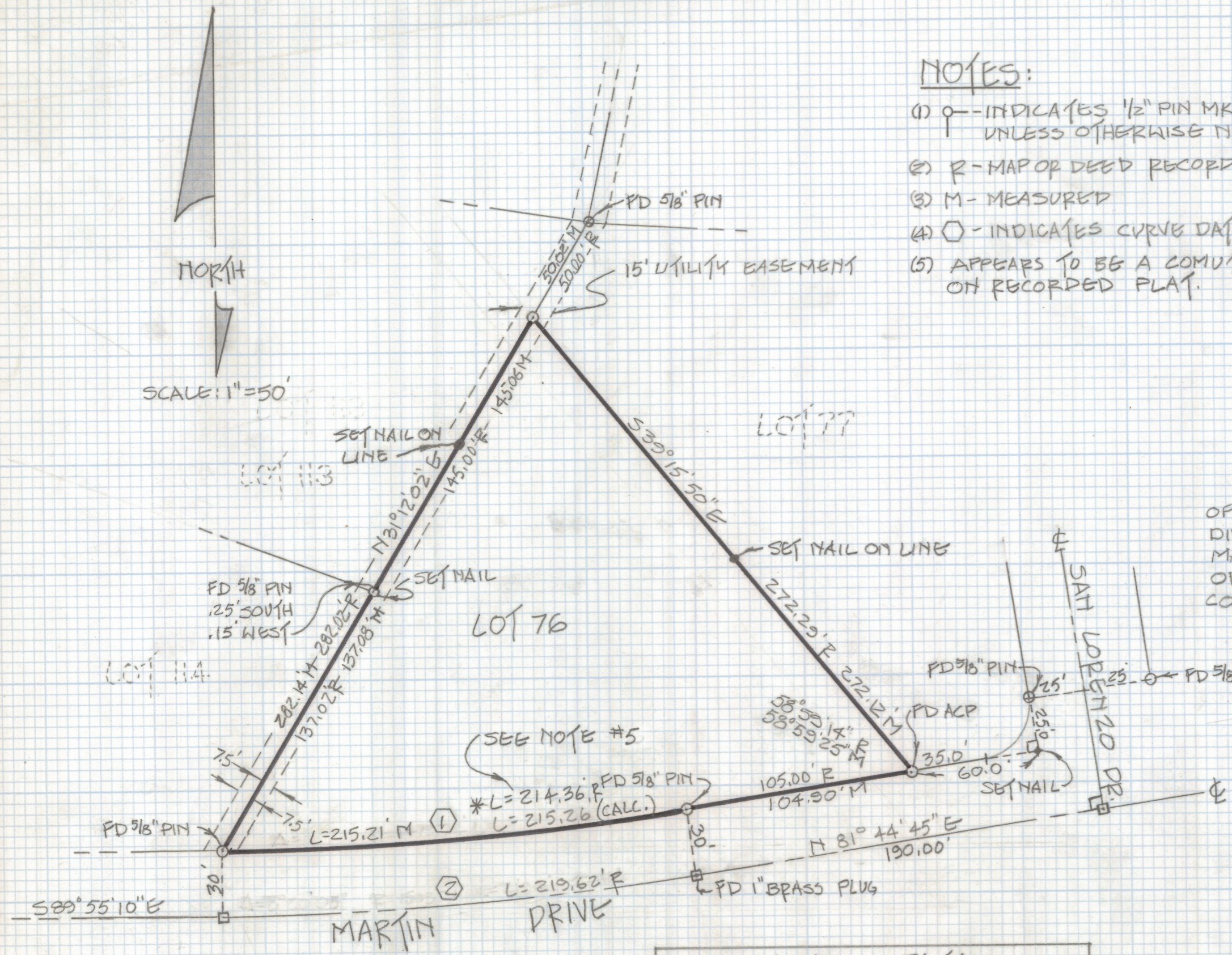
DISCLAIMER:

This unrecorded Record of Survey was donated to the City of Tucson. The City of Tucson provides this data for your personal use "as is." Additionally, the City of Tucson provides this information with the understanding that it is not guaranteed to be accurate, correct or complete and conclusions drawn from such information are the responsibility of the user.



NOTES:

- (1) INDICATES 1/2" PIN MKD LS 4680 SET UNLESS OTHERWISE NOTED.
- (2) R - MAP OR DEED RECORD
- (3) M - MEASURED
- (4) INDICATES CURVE DATA
- (5) APPEARS TO BE A COMPUTATION ERROR ON RECORDED PLAT.



RESULTS OF SURVEY

OF LOT 76 OF ORANGE GROVE PARK SUB-DIVISION AS RECORDED IN BOOK 13 OF MAPS AND PLATS AT PAGE 19 IN THE OFFICE OF THE PIMA COUNTY RECORDER, PIMA COUNTY, ARIZONA.

CURVE DATA					
NO	Δ	R	L	T	C
1	8°20'05"	1479.74	215.26	107.82	215.07
2	8°20'05"	1509.74	219.62	110.0'	219.43



Z-2018-363

ROBERT F. MELLEN
REGISTERED LAND SURVEYOR
TUCSON, ARIZONA
JOB # 85-135