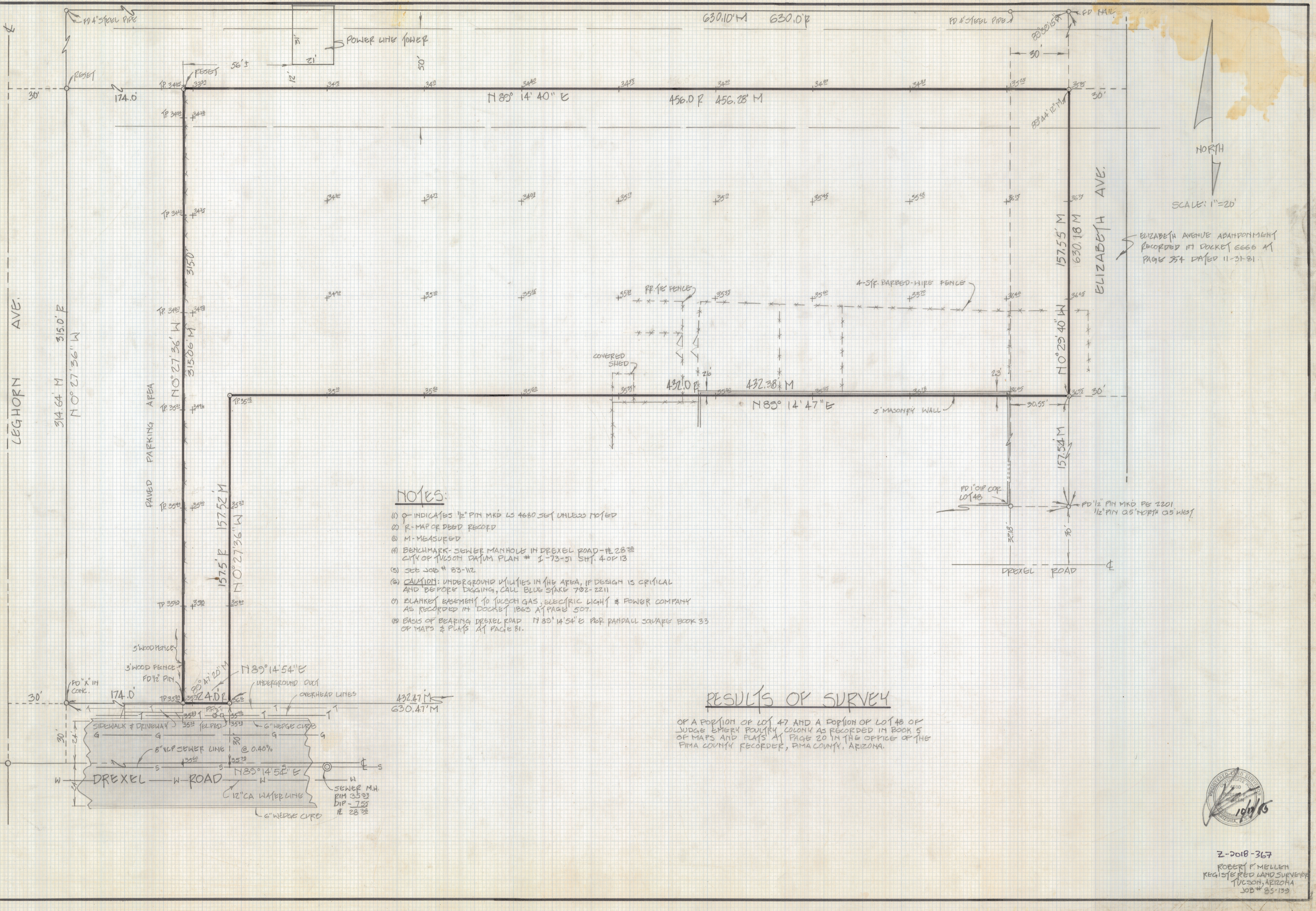


DISCLAIMER:

This unrecorded Record of Survey was donated to the City of Tucson. The City of Tucson provides this data for your personal use "as is." Additionally, the City of Tucson provides this information with the understanding that it is not guaranteed to be accurate, correct or complete and conclusions drawn from such information are the responsibility of the user.



NOTES:

- (1) \circ INDICATES 1/2" PIN MKD LS 4680 SET UNLESS NOTED
- (2) R - MAP OR DEED RECORD
- (3) M - MEASURED
- (4) BENCHMARK - SEWER MANHOLE IN DREXEL ROAD - # 2822 CITY OF TUCSON DATUM PLAN # 1-73-51 SH. 4 OF 13
- (5) SEE JOB # 83-112
- (6) **CAUTION:** UNDERGROUND UTILITIES IN THE AREA, IF DESIGN IS CRITICAL AND BEFORE DIGGING, CALL BLUE STAKE 702-2211
- (7) EASEMENTS TO TUCSON GAS, ELECTRIC LIGHT & POWER COMPANY AS RECORDED IN DOCKET 1863 AT PAGE 507.
- (8) BASIS OF BEARING DREXEL ROAD N 83° 14' 54" E PER RANDALL SQUARE BOOK 33 OF MAPS & PLATS AT PAGE 81.

RESULTS OF SURVEY

OF A PORTION OF LOT 47 AND A PORTION OF LOT 48 OF JUDGE EMERY POULTRY COLONY AS RECORDED IN BOOK 5 OF MAPS AND PLATS AT PAGE 20 IN THE OFFICE OF THE PIMA COUNTY RECORDER, PIMA COUNTY, ARIZONA.



Z-2018-367
 ROBERT F. MELLEM
 REGISTERED LAND SURVEYOR
 TUCSON, ARIZONA
 JOB # 85-133