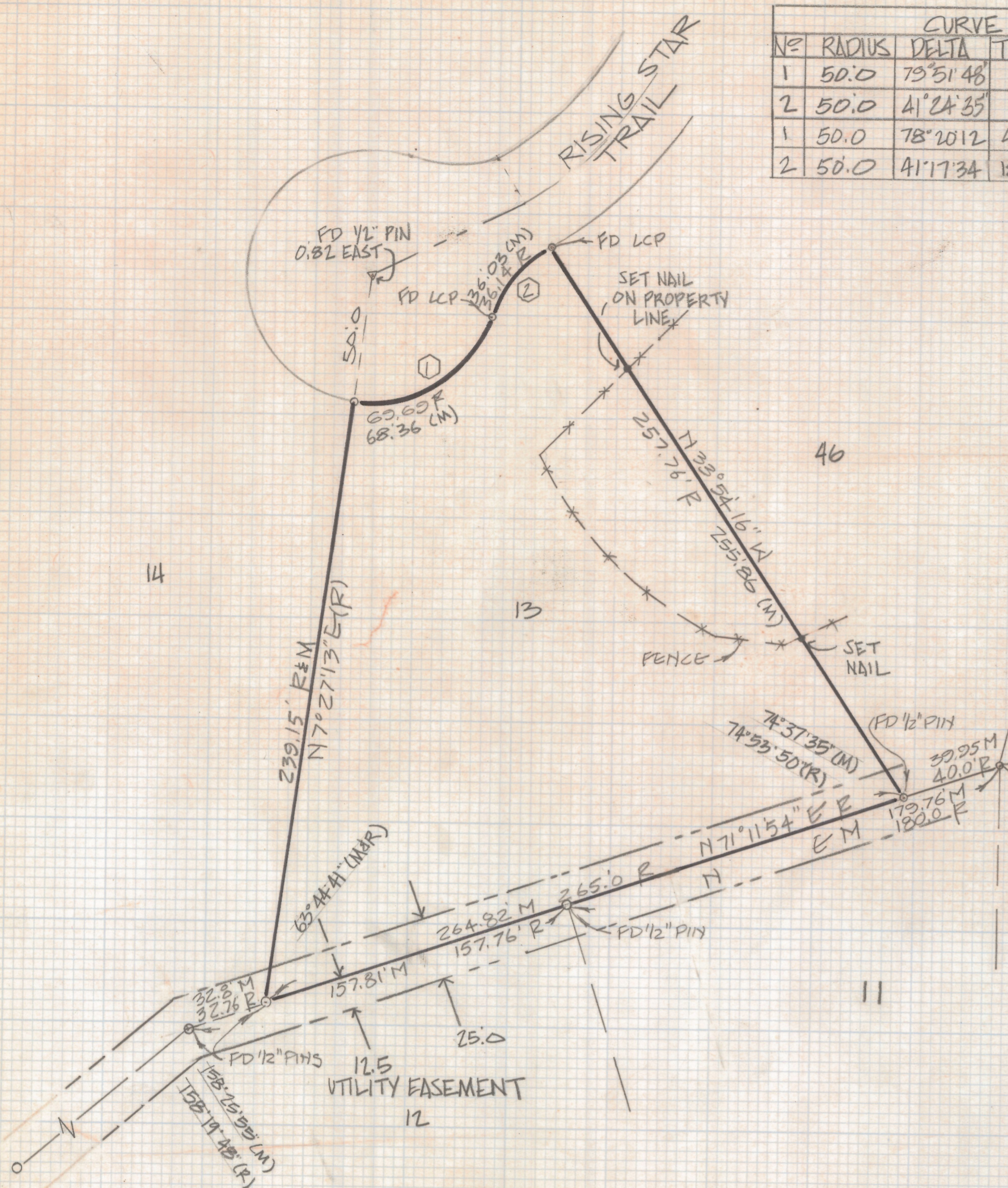
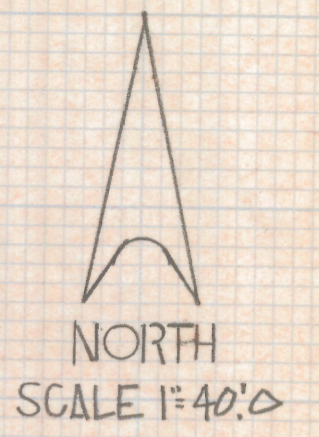


# **DISCLAIMER:**

**This unrecorded Record of Survey was donated to the City of Tucson. The City of Tucson provides this data for your personal use "as is." Additionally, the City of Tucson provides this information with the understanding that it is not guaranteed to be accurate, correct or complete and conclusions drawn from such information are the responsibility of the user.**

CURVE DATA					
No	RADIUS	DELTA	TANGENT	LENGTH	CHORD
1	50.0	79°51'48"	41.85	69.69'	64.19
2	50.0	41°24'35"	18.90	36.14'	35.36'
1	50.0	78°20'12"	40.73	68.36	63.16
2	50.0	41°17'34"	18.84	36.03	35.26

RECORD  
RECORD  
MEASURED  
MEASURED



NOTES

- (1) - INDICATES SET 1/2" PIN MKD L.S. 4680 UNLESS NOTED
- (2) M - MEASURED
- (3) R - MAP OR DEED RECORD
- (4) FOUND MONUMENTS DO NOT AGREE WITH BEARINGS AND DISTANCES FOUND ON RECORDED PLAT BY APPROXIMATELY 1.5 FEET

RESULTS OF SURVEY

OF LOT 13 HIAWATHA HILLS RECORDED IN BOOK 14 OF MAPS AND PLATS AT PAGE 29 IN THE OFFICE OF THE PIMA COUNTY RECORDER, PIMA COUNTY ARIZONA



Z-2018-368  
ROBERT F. MELLEN  
REGISTERED LAND SURVEYOR  
TUCSON, ARIZONA  
JOB # 85-140