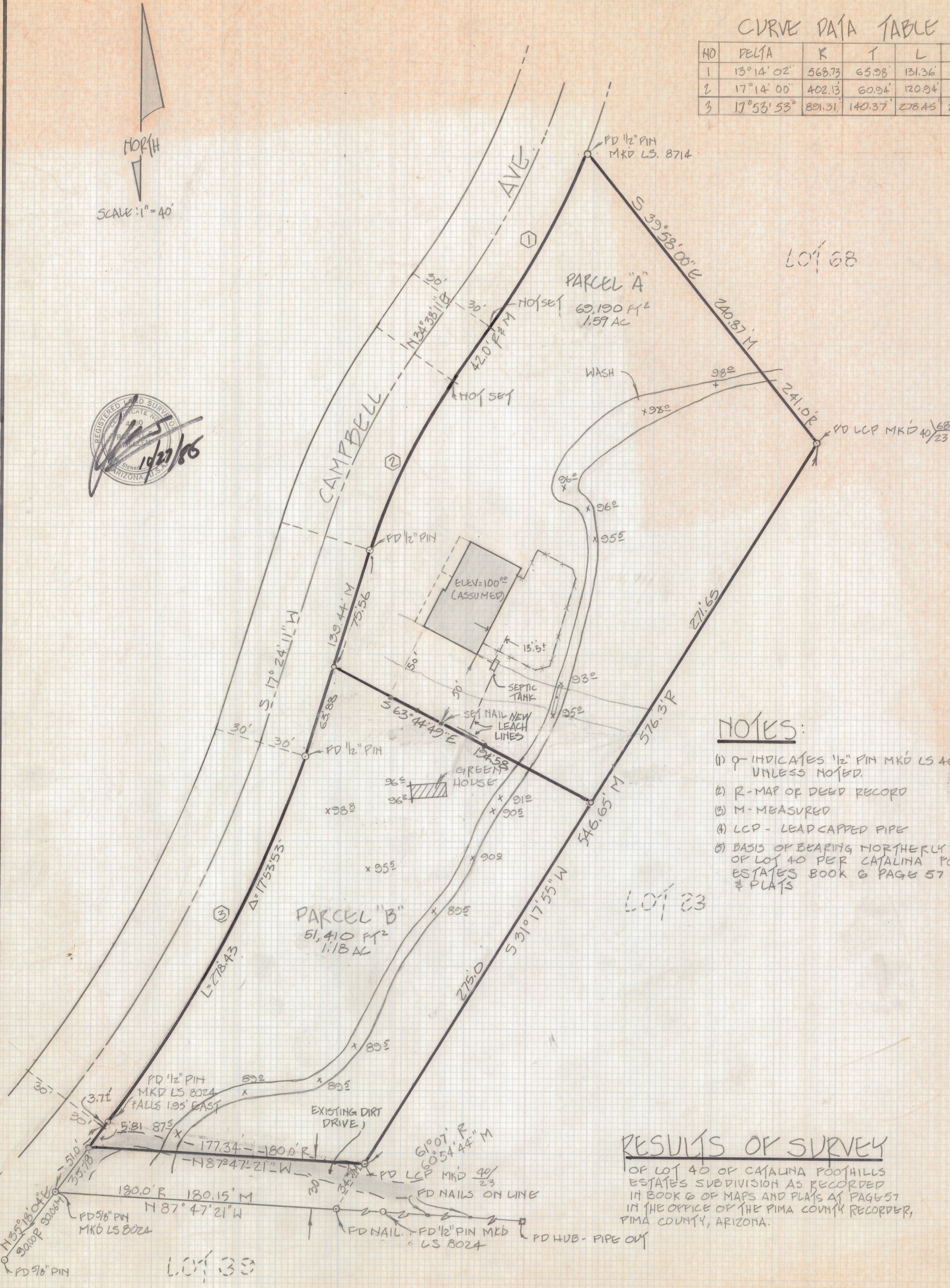
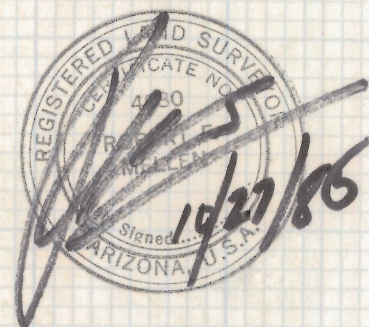
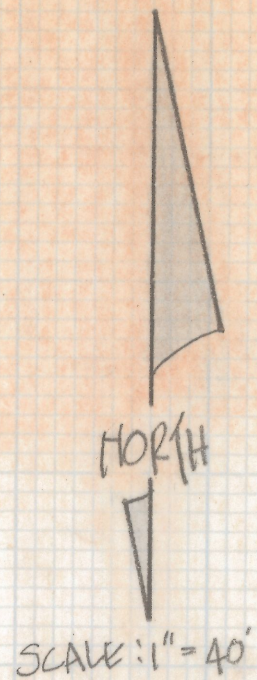


DISCLAIMER:

This unrecorded Record of Survey was donated to the City of Tucson. The City of Tucson provides this data for your personal use "as is." Additionally, the City of Tucson provides this information with the understanding that it is not guaranteed to be accurate, correct or complete and conclusions drawn from such information are the responsibility of the user.

CURVE DATA TABLE

NO	DELTA	R	T	L	C
1	13°14'02"	568.73	65.98	131.36	131.07
2	17°14'00"	402.13	60.94	120.94	120.5
3	17°53'53"	891.31	140.37	278.45	277.32



NOTES:

- (1) Q INDICATES 1/2" PIN MKD LS 4680 SET UNLESS NOTED.
- (2) R - MAP OF DEED RECORD
- (3) M - MEASURED
- (4) LCP - LEAD CAPPED PIPE
- (5) BASIS OF BEARING NORTHERLY LINE OF LOT 40 PER CATALINA FOOTHILLS ESTATES BOOK 6 PAGE 57 MAPS & PLATS

RESULTS OF SURVEY

OF LOT 40 OF CATALINA FOOTHILLS ESTATES SUBDIVISION AS RECORDED IN BOOK 6 OF MAPS AND PLATS AT PAGE 57 IN THE OFFICE OF THE PIMA COUNTY RECORDER, PIMA COUNTY, ARIZONA.

REVISED LEACH LINE 2-13-87
REVISED PARCEL AREAS 5/13/86

Z-2018-370
ROBERT F. MELIEN
REGISTERED LAND SURVEYOR
TUCSON, ARIZONA
JOB # 85-144