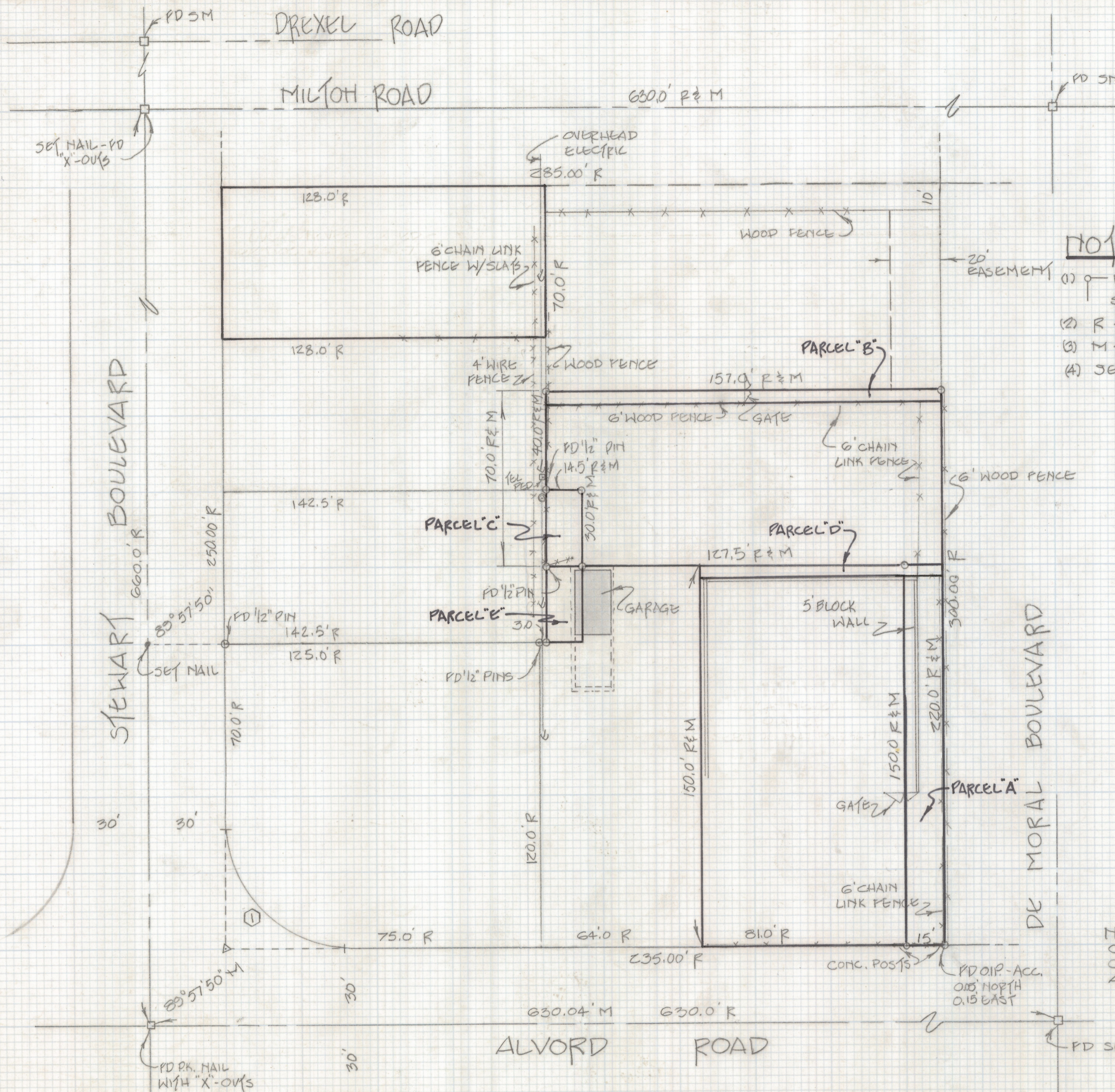


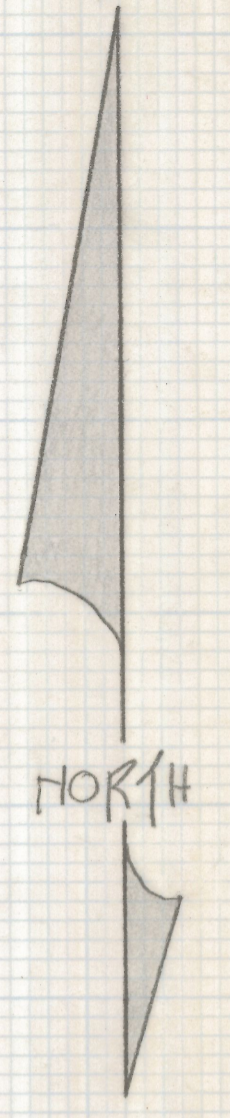
DISCLAIMER:

This unrecorded Record of Survey was donated to the City of Tucson. The City of Tucson provides this data for your personal use "as is." Additionally, the City of Tucson provides this information with the understanding that it is not guaranteed to be accurate, correct or complete and conclusions drawn from such information are the responsibility of the user.



NOTES:

- (1) \circ INDICATES 1/2" PIN MKD LS 4680 SET UNLESS NOTED
- (2) R - MAP OR DEED RECORD
- (3) M - MEASURED
- (4) SEE JOB # 75-118



SCALE: 1" = 30'

RESULTS OF SURVEY

OF A PORTION OF LOT 241 OF LOS RANCHITOS NO. 6 SUBDIVISION AS RECORDED IN BOOK 8 OF MAPS AND PLATS AT PAGE 41 IN THE OFFICE OF THE PIMA COUNTY RECORDER, PIMA COUNTY, ARIZONA.

CURVE TABLE

NO.	DELTA	RADIUS	ARC	TANGENT	CHORD
1	90°02'10"	49.97	78.52	50.0'	70.69



Z-2018-372
 ROBERT F. MELLEN
 REGISTERED LAND SURVEYOR
 TUCSON, ARIZONA
 JOB # 85-148

*Thos
 Early Morse*