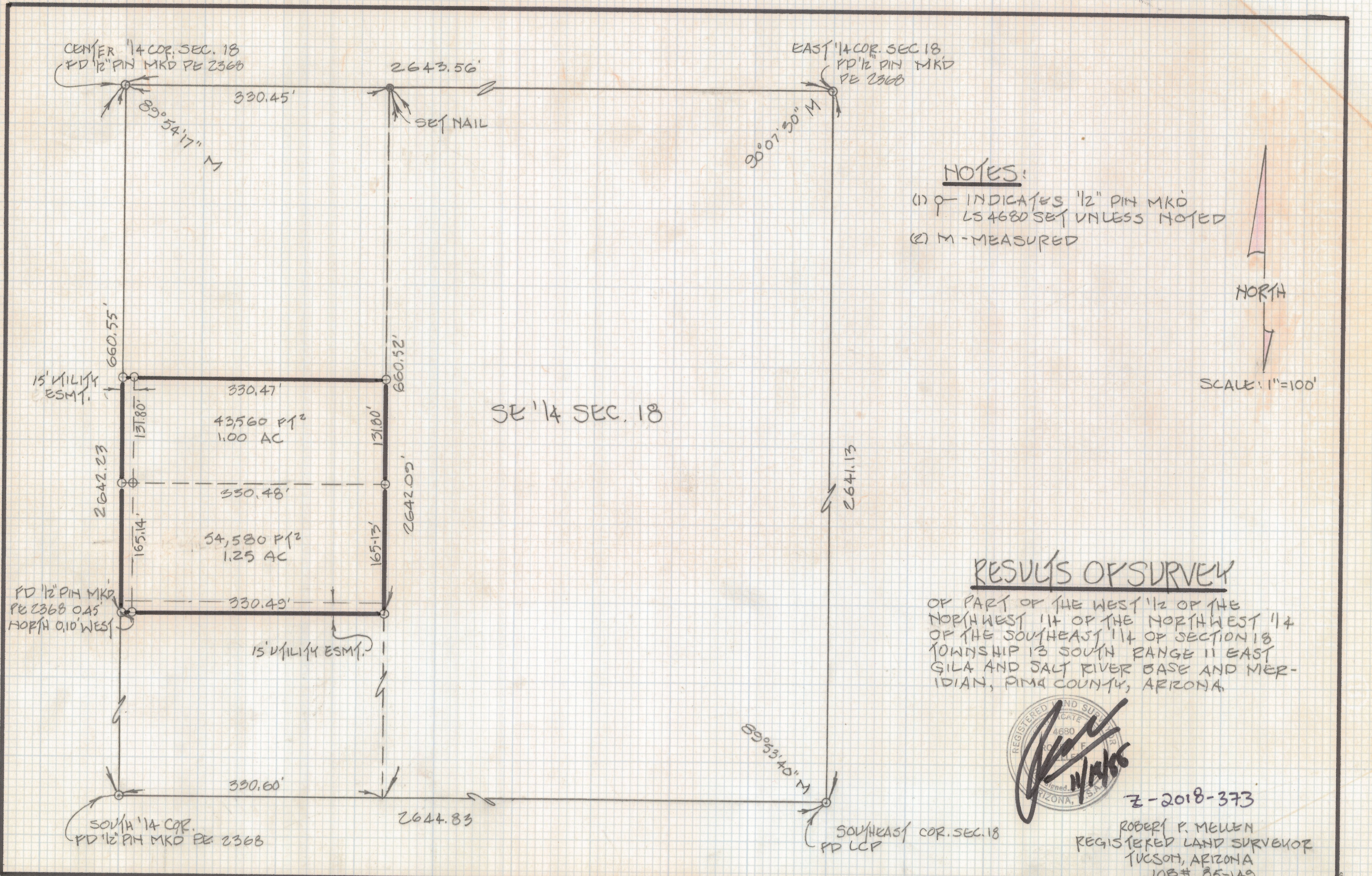


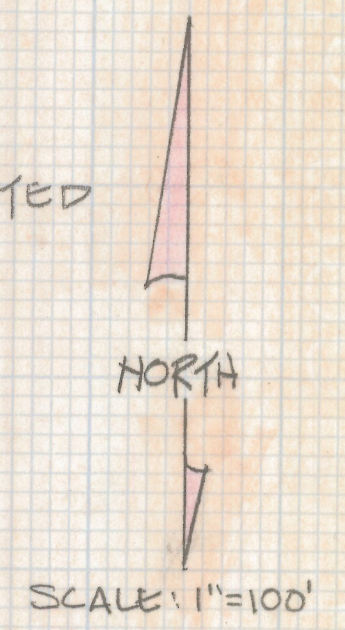
DISCLAIMER:

This unrecorded Record of Survey was donated to the City of Tucson. The City of Tucson provides this data for your personal use "as is." Additionally, the City of Tucson provides this information with the understanding that it is not guaranteed to be accurate, correct or complete and conclusions drawn from such information are the responsibility of the user.



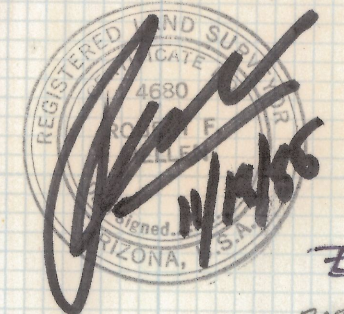
NOTES:

- (1) \circ INDICATES 1/2" PIN MKD
LS 4680 SET UNLESS NOTED
- (2) M - MEASURED



RESULTS OF SURVEY

OF PART OF THE WEST 1/2 OF THE NORTHWEST 1/4 OF THE NORTHWEST 1/4 OF THE SOUTHEAST 1/4 OF SECTION 18 TOWNSHIP 13 SOUTH RANGE 11 EAST GILA AND SALT RIVER BASE AND MERIDIAN, PIMA COUNTY, ARIZONA



Z-2018-373
 ROBERT P. MELLEN
 REGISTERED LAND SURVEYOR
 TUCSON, ARIZONA
 JOB# 85-149

CENTER 1/4 COR. SEC. 18
 PD 1/2" PIN MKD PE 2368

330.45'

2643.56'

89°54'17" M

SET NAIL

EAST 1/4 COR. SEC. 18
 PD 1/2" PIN MKD
 PE 2368

30°07'30" M

660.55'

15' UTILITY
 ESMY.

330.47'

43,560 P12
 1.00 AC

131.80'

660.52'

2642.23'

330.48'

54,580 P12
 1.25 AC

165.13'

2642.09'

165.14'

330.49'

15' UTILITY
 ESMY.

PD 1/2" PIN MKD
 PE 2368 OAS
 NORTH 0.10' WEST

330.60'

2644.83'

89°53'40" M

SOUTHEAST COR. SEC. 18
 PD LCP

SOUTH 1/4 COR.
 PD 1/2" PIN MKD PE 2368