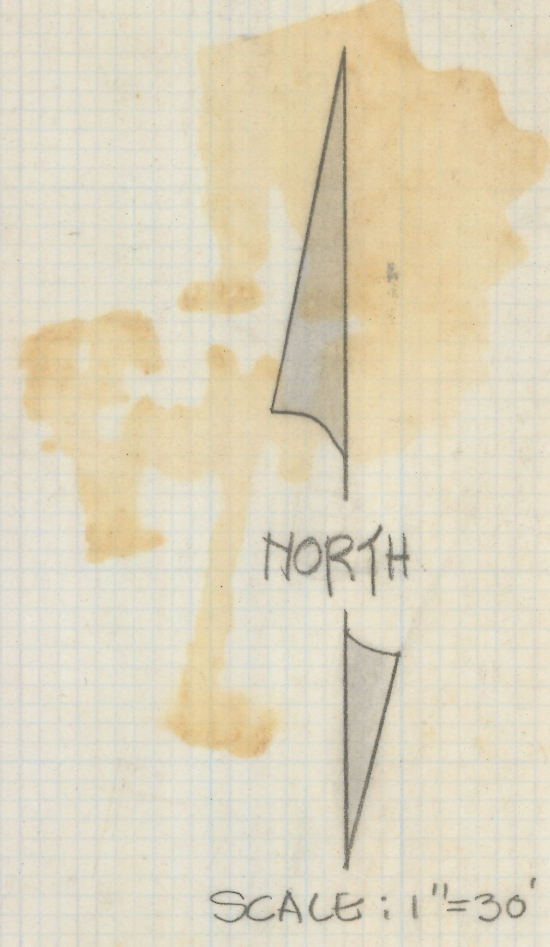
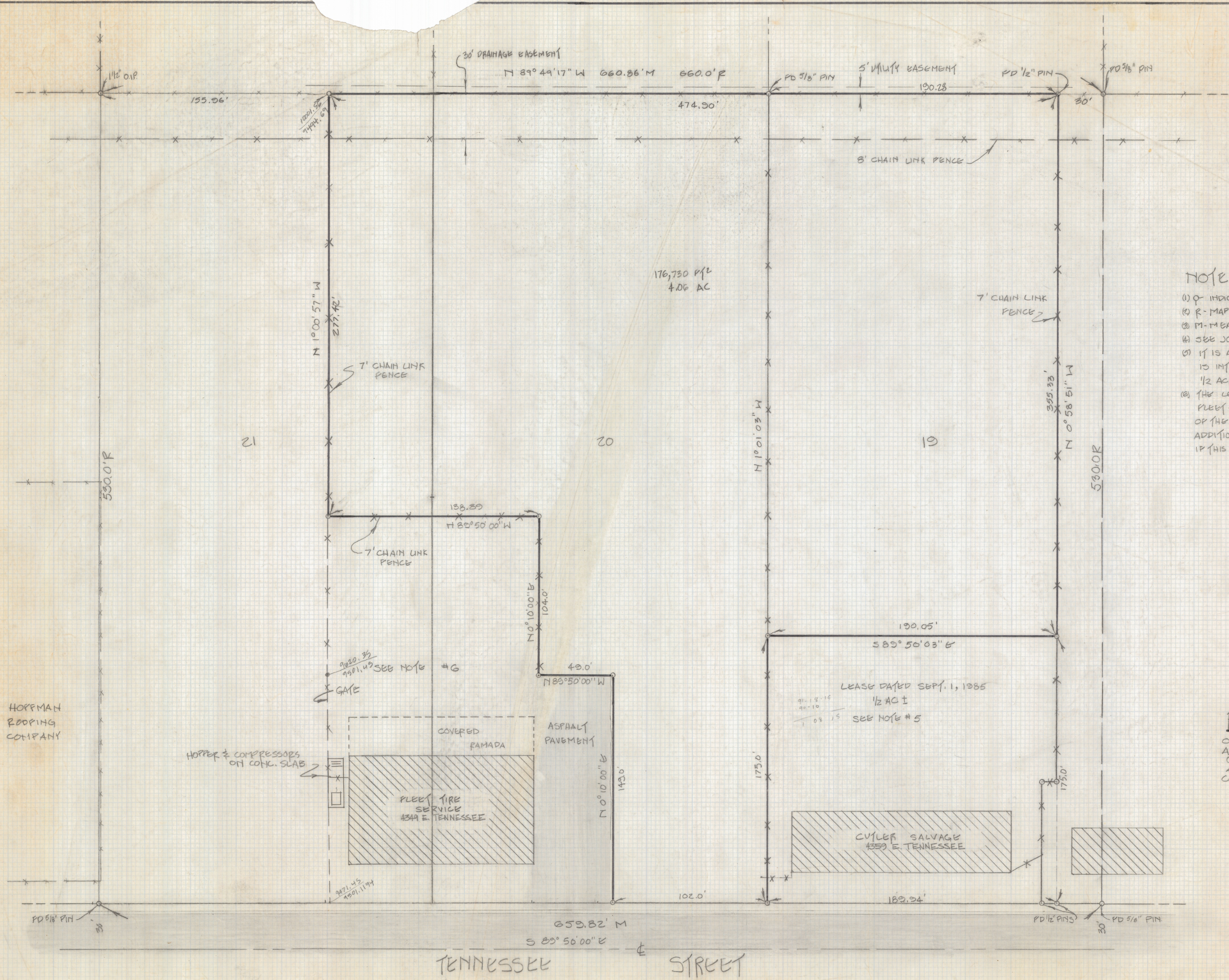


DISCLAIMER:

This unrecorded Record of Survey was donated to the City of Tucson. The City of Tucson provides this data for your personal use "as is." Additionally, the City of Tucson provides this information with the understanding that it is not guaranteed to be accurate, correct or complete and conclusions drawn from such information are the responsibility of the user.



- NOTES:
- (1) Q INDICATES 1/2" PIN MKD LS 4680 SET UNLESS NOTED.
 - (2) R-MAP OR DEED RECORD
 - (3) M-MEASURED
 - (4) SEE JOB # 80-89 & # 80-85
 - (5) IT IS ASSUMED THAT THE LEASE TO CUTLER SALVAGE IS INTENDED TO LEASE A 6000 P/2 BUILDING AND 1/2 ACRE BEHIND THIS BUILDING.
 - (6) THE LEASE AGREEMENT DATED NOV. 1, 1984 TO PLEET TIRE SERVICE DOES NOT DEFINE THE EXACT AREA OF THE 6000 P/2 YARD OR APPROXIMATE 12,000 P/2 ADDITIONAL LAND THEREFORE IT WAS NOT DETERMINED IF THIS SURVEY CONFLICTS WITH THE LEASE.

RESULTS OF SURVEY
 OF PORTIONS OF LOTS 19, 20, & 21 OF ALVERTON MANOR SUBDIVISION AS RECORDED IN BOOK 8 OF MAPS AND PLATS AT PAGE 77 IN THE OFFICE OF THE PIMA COUNTY RECORDER, PIMA COUNTY, ARIZONA.

