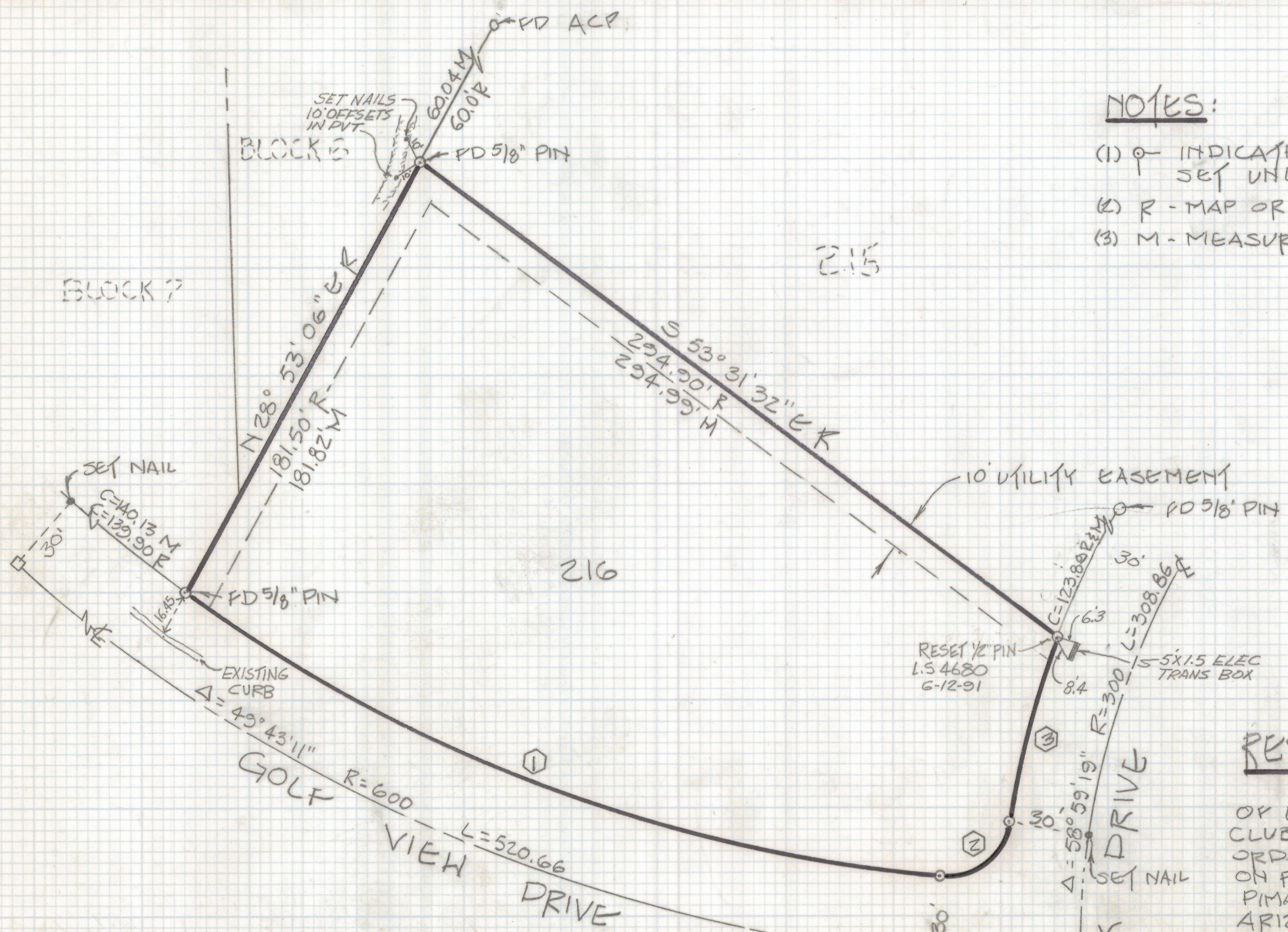


# **DISCLAIMER:**

**This unrecorded Record of Survey was donated to the City of Tucson. The City of Tucson provides this data for your personal use "as is." Additionally, the City of Tucson provides this information with the understanding that it is not guaranteed to be accurate, correct or complete and conclusions drawn from such information are the responsibility of the user.**





NOTES:

- (1)  $\odot$  INDICATES 1/2" PIN MKD LS 4680 SET UNLESS NOTED.
- (2) R - MAP OR DEED RECORD
- (3) M - MEASURED



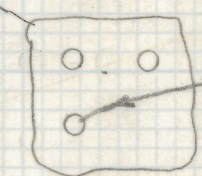
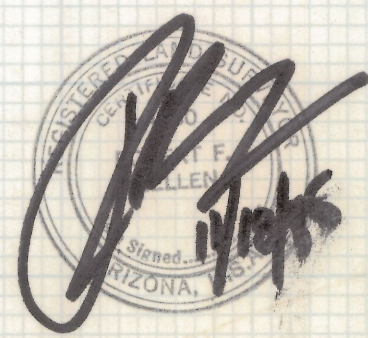
SCALE: 1" = 40'

RESULTS OF SURVEY

OF LOT 216 OF ORO VALLEY COUNTRY CLUB ESTATES SUBDIVISION AS RECORDED IN BOOK 13 OF MAPS AND PLATS ON PAGE 60 IN THE OFFICE OF THE PIMA COUNTY RECORDER, PIMA COUNTY, ARIZONA.

CURVE DATA

NO.	DELTA	R	L	T	C
1	30° 19' 21"	570.00'	301.66'	154.45'	298.15'
2	86° 00' 23"	25.00'	37.53'	23.32'	34.10'
3	12° 09' 13"	330.00'	70.00'	35.13'	69.87'



PD 3 SM W/X'-OUTS ACCEPTED

REVISED 6-12-91

Z-2018-377  
 ROBERT P. MELLEN  
 REGISTERED LAND SURVEYOR  
 TUCSON, ARIZONA  
 JOB 85-156