

DISCLAIMER:

This unrecorded Record of Survey was donated to the City of Tucson. The City of Tucson provides this data for your personal use "as is." Additionally, the City of Tucson provides this information with the understanding that it is not guaranteed to be accurate, correct or complete and conclusions drawn from such information are the responsibility of the user.

GARDEN HOMES ANNEX
BOOK 6 PAGE 54
MAPS & PLATS

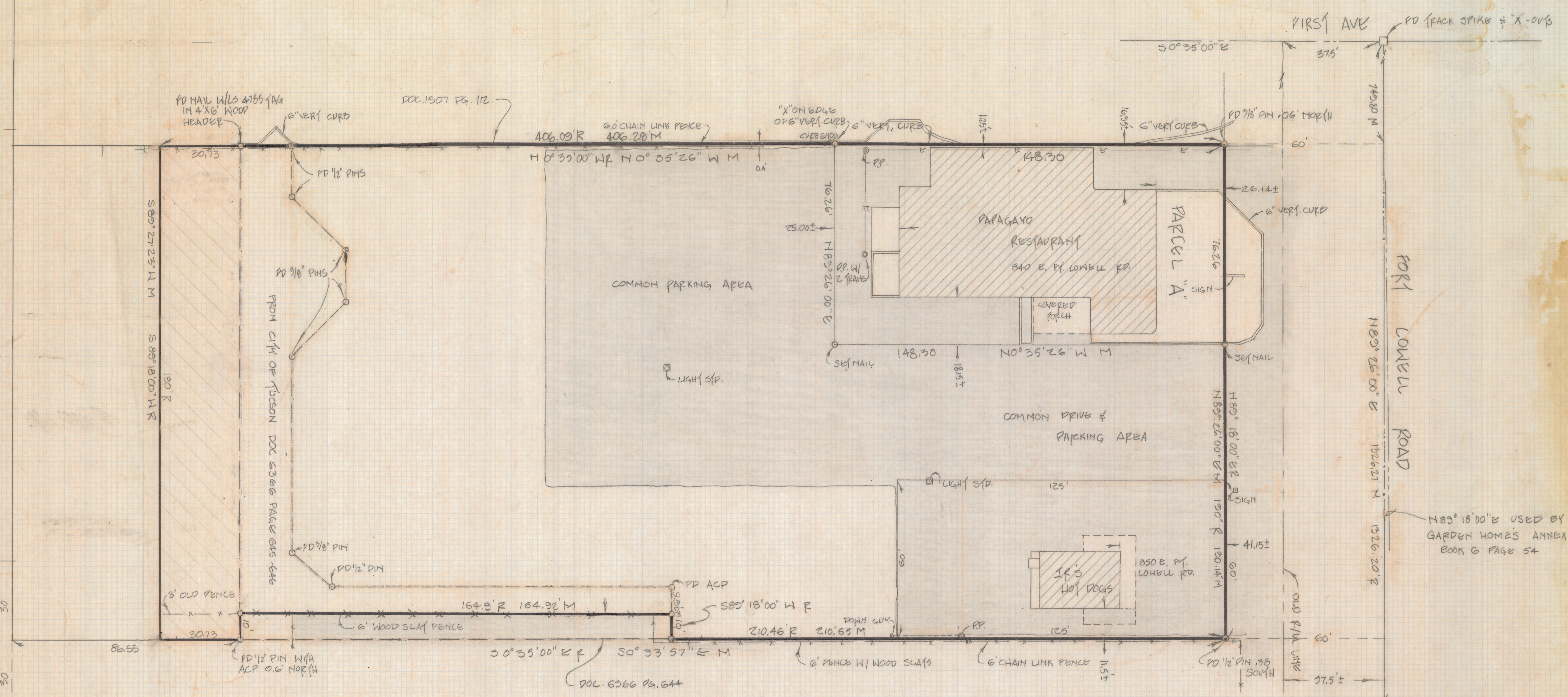
BLOCK 6

LOT 3

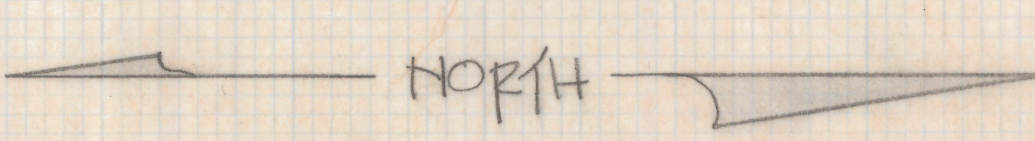
TINDALL
AVE.

LOT 6

LOT 7 BLOCK 6



SCALE: 1" = 20'

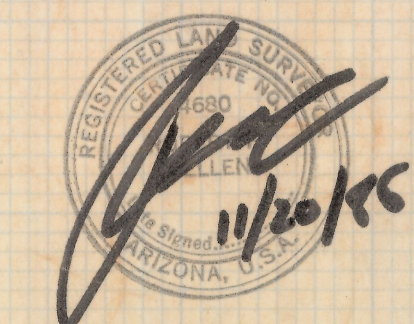


NOTES:

- (1) ♀ INDICATES 1/2" PIN MK'D L.S. 4600 SET UNLESS OTHERWISE NOTED
- (2) ACP - ALUMINUM CAPPED PIN
- (3) - ASPHALT PAVEMENT
- (4) R - MAP OF DEED RECORD
- (5) M - MEASURED
- (6) SEE WHEELER, PETERSON CORP. PLAN # 7749
" CO. PLAN # H-71-4
" CO. PLAN # R-71-12 SH. 1 OF 4
- (7) BASIS OF BEARING NORTH LINE OF NORTH WEST 1/4 OF SEC. 31, T. 13 S, R. 14 E. G. & S. R. O. & M., PIMA COUNTY, ARIZONA, AS PER CO. PLAN H71-4, SAID BEARING BEING NORTH 89° 26' 00" EAST.

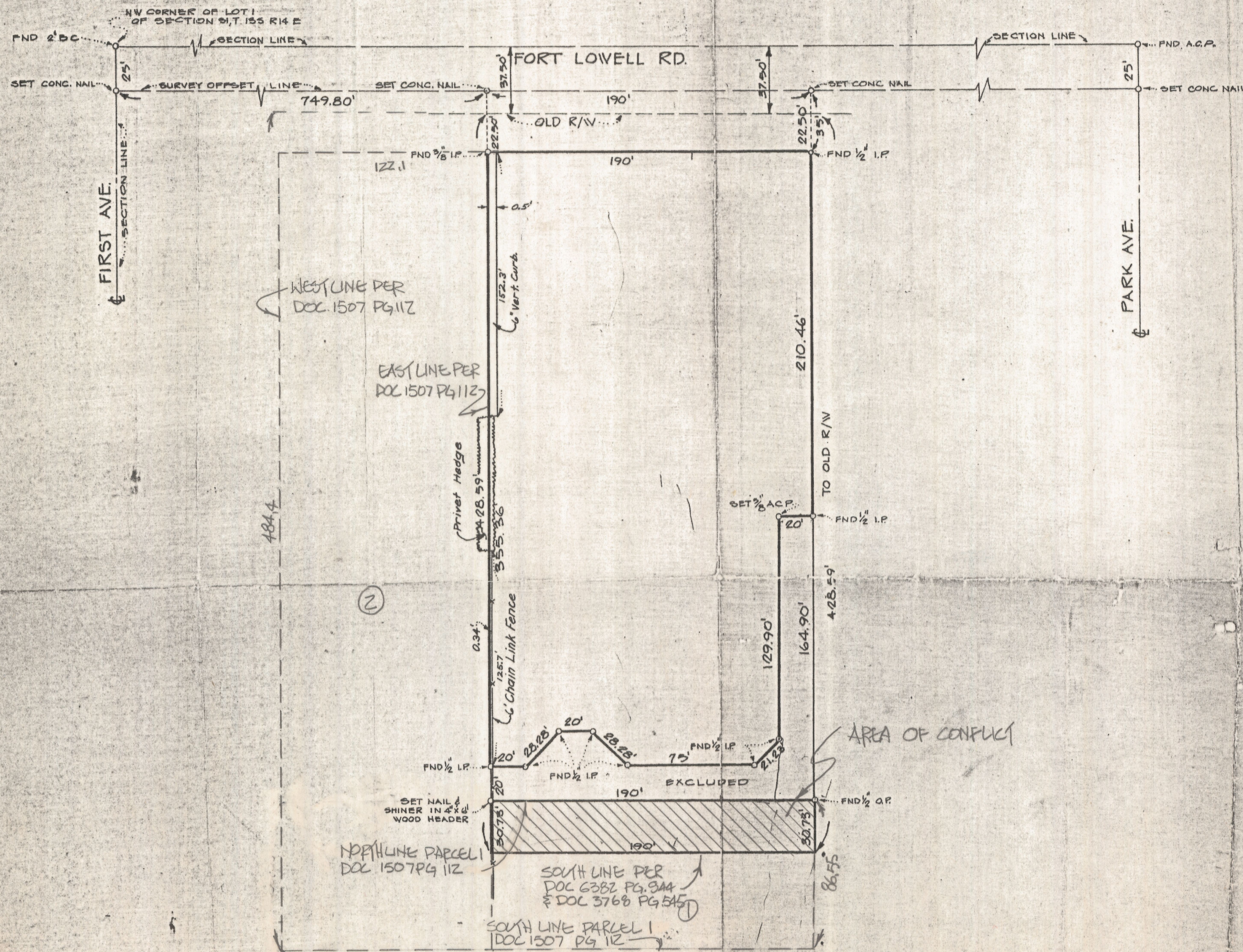
RESULTS OF SURVEY

OF PART OF LOT 1 OF SECTION 31 TOWNSHIP 13 SOUTH RANGE 14 EAST GILA AND SALT RIVER BASE AND MERIDIAN, PIMA COUNTY, ARIZONA.
PER DOCKET # 6382 PAGE 344



REVISED SOUTH LINE 8/19/87
REVISED ADJONDEES 6/4/86
REVISED PARCEL 12-3-85

Z-2018-379 1/2
ROBERT F. MELLEN
REGISTERED LAND SURVEYOR
TUCSON, ARIZONA
JOB # 85-160



Robert W. Petterson
 3-26-71

Z-2018-379 2/2

REVISED ADJOINERS					6/4/86
1	Revised	LLC			3-26-71
No.	DRAWING STATUS	By	Appr	Date	
Wheeler Petterson Coffeen ENGINEERS SURVEYORS PLANNERS TUCSON, ARIZONA					
RESULTS OF A SURVEY OF A PORTION OF LOT 1 SECTION 31, T-13-S, R-14-E PIAA COUNTY, ARIZONA					
Drawn	Designed	Approved	RE: FIELD Book 26, Pg. 62	Sheet	
MOSLEY	R.J.O.			1	of
Date	Scale	Horiz	PLAN NO 774B	1	
11/2/70	1" = 50'				