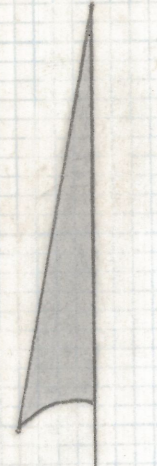


DISCLAIMER:

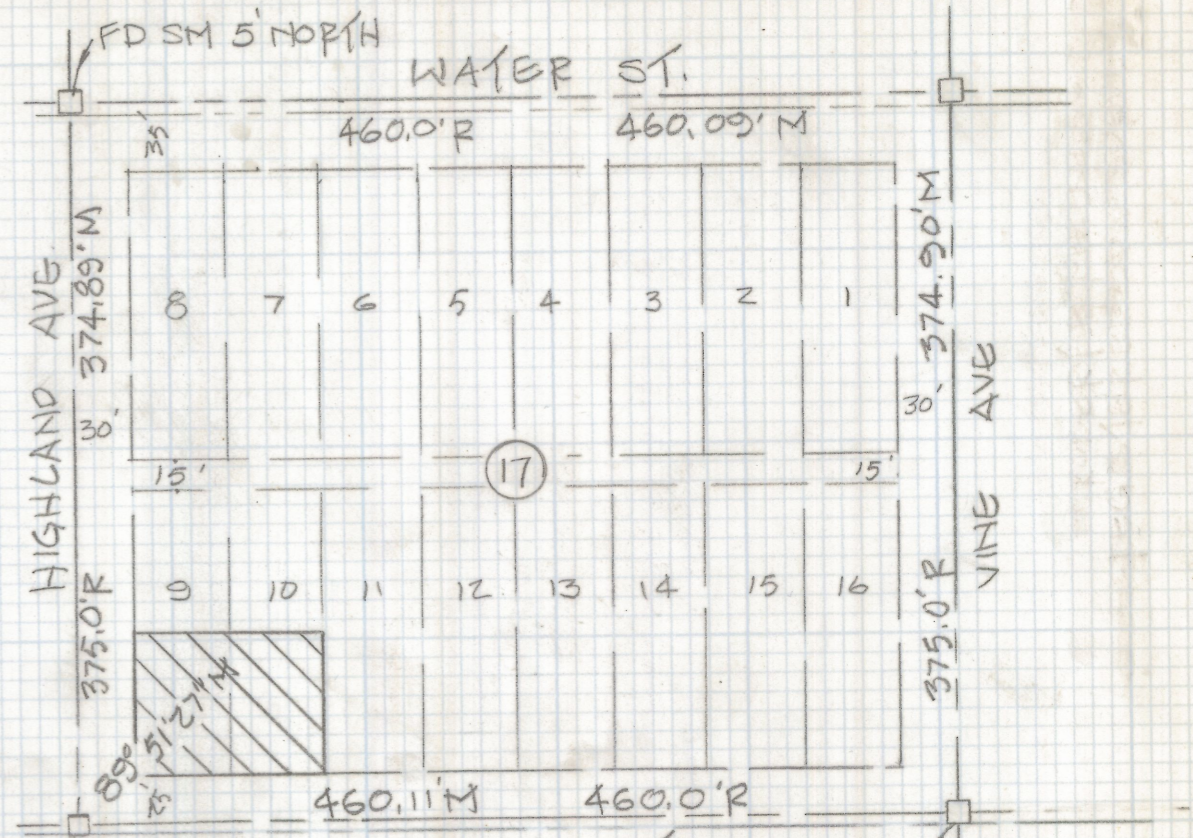
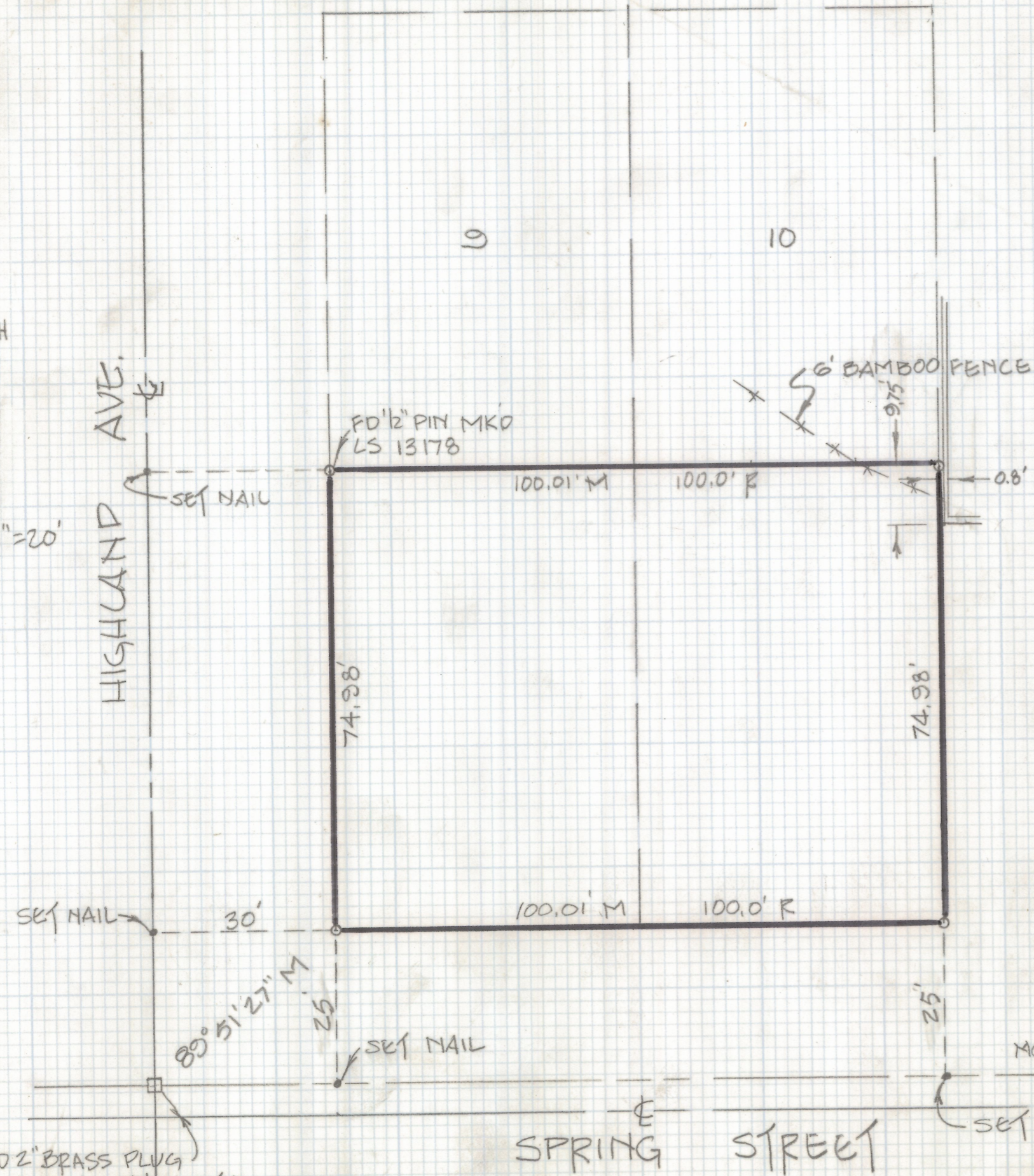
This unrecorded Record of Survey was donated to the City of Tucson. The City of Tucson provides this data for your personal use "as is." Additionally, the City of Tucson provides this information with the understanding that it is not guaranteed to be accurate, correct or complete and conclusions drawn from such information are the responsibility of the user.



NORTH

SCALE: 1"=20'

HIGHLAND AVE.



FD 2" BRASS PLUG IN CONC. 5' NORTH
 SCALE 1"=100'

NOTES:

- 1) \circ INDICATES 1/2" PIN MKD LS 4680 SET UNLESS NOTED.
- 2) R - MAP OR DEED RECORD
- 3) M - MEASURED

RESULTS OF SURVEY

OF THE SOUTH HALF OF LOTS 9 AND 10 IN BLOCK 17 OF JEFFERSON PARK ADDITION AS RECORDED IN BOOK 4 OF MAPS AND PLATS AT PAGE 17 IN THE OFFICE OF THE PIMA COUNTY RECORDER, PIMA COUNTY, ARIZONA.



ROBERT F. MELLEN
 REGISTERED LAND SURVEYOR OF
 TULSON, ARIZONA
 JOB # 85-165

Z-2018-382