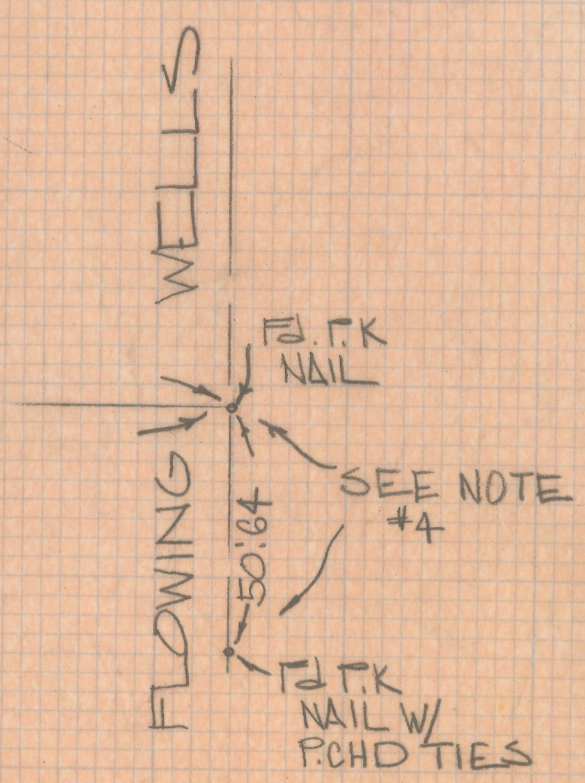
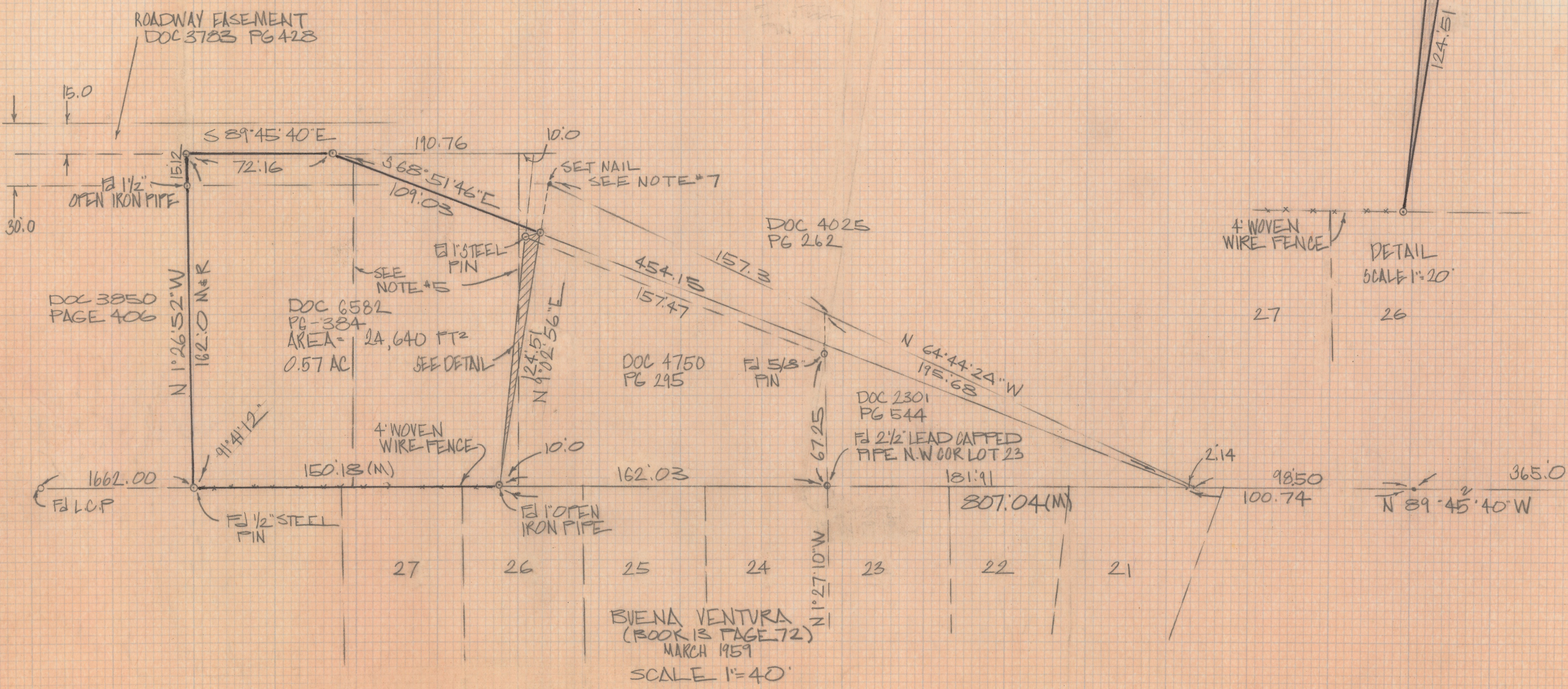
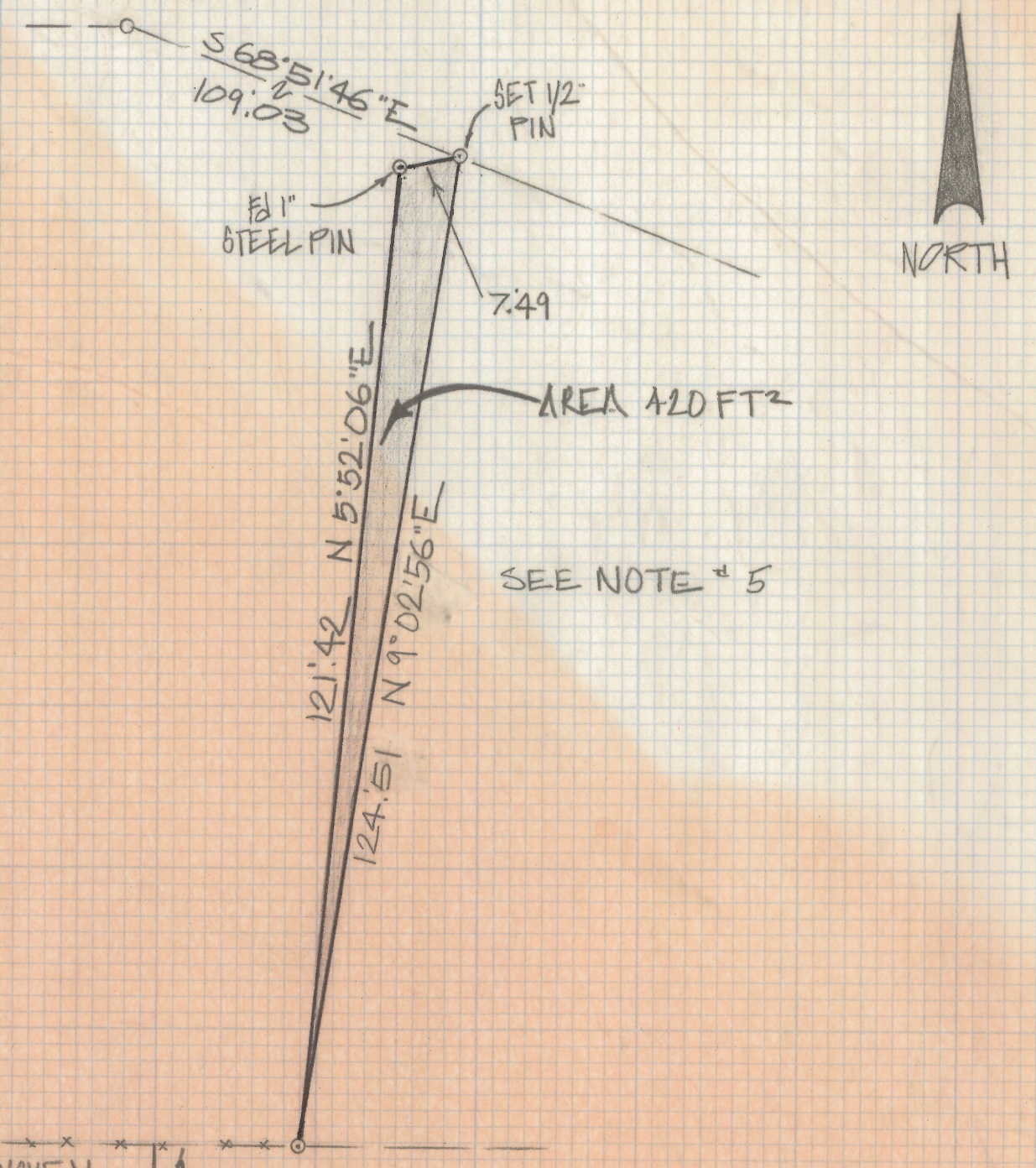


DISCLAIMER:

This unrecorded Record of Survey was donated to the City of Tucson. The City of Tucson provides this data for your personal use "as is." Additionally, the City of Tucson provides this information with the understanding that it is not guaranteed to be accurate, correct or complete and conclusions drawn from such information are the responsibility of the user.

NOTES

- (1) -9 INDICATES SET 1/2" PIN MKD L.S. 4680 UNLESS NOTED
- (2) M- MEASURED
- (3) R- MAP OR DEED RECORD
- (4) THE SOUTHEAST CORNER OF SECTION 15 HAS BEEN DISPUTED FOR MANY YEARS THE CORNER USED IS THAT REFERRED TO AS THE OLD SECTION CORNER AND NOT THAT ACCEPTED BY PIMA COUNTY HIGHWAY DEPT
- (5) THE CROSS HATCHED AREA HAS CONFLICTING DEEDS AND SHOULD BE RESOLVED BY EXCHANGE OF QUIT CLAIM DEEDS
- (6) THESE LINES WERE INCLUDED ON THIS MAP AT THE REQUEST OF THE OWNER AND REPRESENTS 2.80' X 162' LOTS
- (7) THIS POINT IS THE POINT OF BEGINNING OF DOC 6582 PAGE 384



RESULTS OF SURVEY

OF A PORTION OF THE SOUTH HALF OF THE SOUTHEAST QUARTER SECTION 15 TOWNSHIP 13 SOUTH RANGE 13 EAST GILA AND SALT RIVER BASE AND MERIDIAN PIMA COUNTY ARIZONA



ROBERT F. MELLEN
REGISTERED LAND SURVEYOR
TUCSON, ARIZONA
JOB 844

Z-2018-398