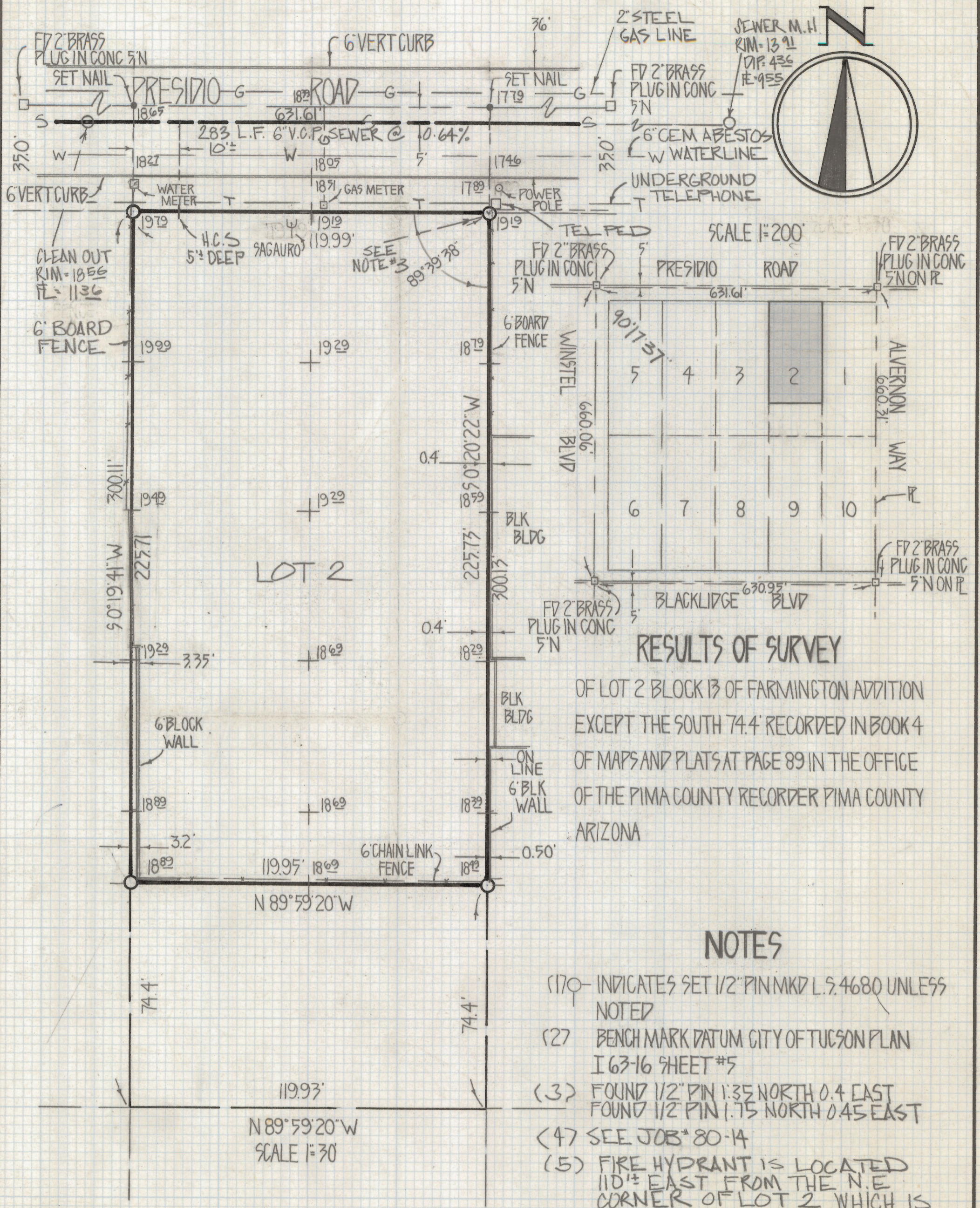


DISCLAIMER:

This unrecorded Record of Survey was donated to the City of Tucson. The City of Tucson provides this data for your personal use "as is." Additionally, the City of Tucson provides this information with the understanding that it is not guaranteed to be accurate, correct or complete and conclusions drawn from such information are the responsibility of the user.



RESULTS OF SURVEY

OF LOT 2 BLOCK 13 OF FARMINGTON ADDITION EXCEPT THE SOUTH 74.4' RECORDED IN BOOK 4 OF MAPS AND PLATS AT PAGE 89 IN THE OFFICE OF THE PIMA COUNTY RECORDER PIMA COUNTY ARIZONA

NOTES

- (1) (17) INDICATES SET 1/2" PIN MKD L.S. 4680 UNLESS NOTED
- (2) BENCH MARK DATUM CITY OF TUCSON PLAN I 63-16 SHEET #5
- (3) FOUND 1/2" PIN 1.35 NORTH 0.4 EAST
FOUND 1/2" PIN 1.75 NORTH 0.45 EAST
- (4) SEE JOB # 80-14
- (5) FIRE HYDRANT IS LOCATED 110'± EAST FROM THE N.E. CORNER OF LOT 2 WHICH IS THE S.W. CORNER OF PRESIDIO AND ALVERNON
- (6) THERE ARE UNDERGROUND UTILITIES IN THE AREA IF LOCATION IS CRITICAL CALL BLUE STAKE 792-2211

Z-2018-406 1/2

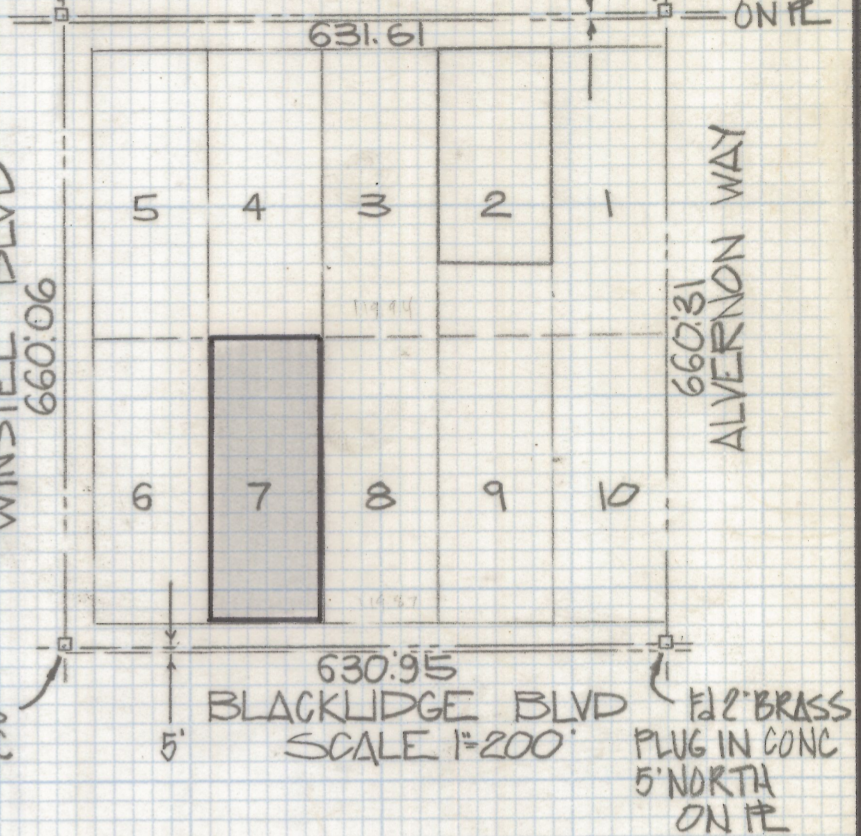
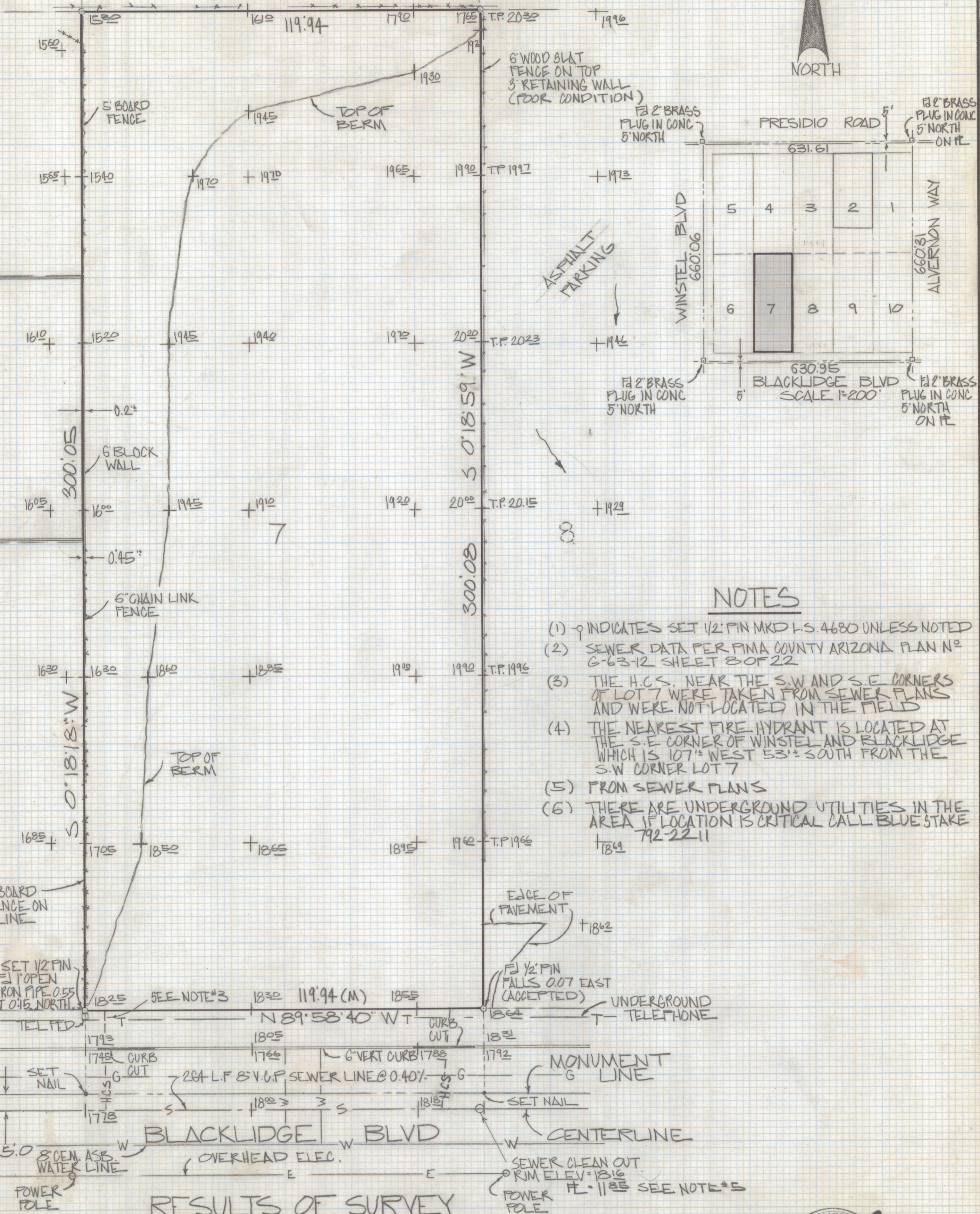
ROBERT F MELLEN
REGISTERED LAND SURVEYOR
TUCSON, ARIZONA
JOB # 84-14



SCALE 1"=20'

5 4 3

N 89° 59' 20" W

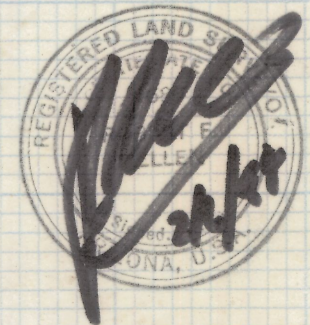


NOTES

- (1) ϕ INDICATES SET 1/2" PIN MKD L.S. 4680 UNLESS NOTED
- (2) SEWER DATA PER PIMA COUNTY ARIZONA PLAN NO G-63-12 SHEET 8 OF 22
- (3) THE H.C.S. NEAR THE S.W AND S.E CORNERS OF LOT 7 WERE TAKEN FROM SEWER PLANS AND WERE NOT LOCATED IN THE FIELD
- (4) THE NEAREST FIRE HYDRANT IS LOCATED AT THE S.E CORNER OF WINSTEL AND BLACKLIDGE WHICH IS 107' WEST 53' ± SOUTH FROM THE S.W CORNER LOT 7
- (5) FROM SEWER PLANS
- (6) THERE ARE UNDERGROUND UTILITIES IN THE AREA IF LOCATION IS CRITICAL CALL BLUE STAKE 792-2211

RESULTS OF SURVEY

OF LOT 7 BLOCK 13 OF FARMINGTON ADDITION RECORDED IN BOOK 4 OF MAPS AND PLATS AT PAGE 89 IN THE OFFICE OF THE PIMA COUNTY RECORDER PIMA COUNTY ARIZONA



7-2018-406 2/2

ROBERT F. MELLEN
REGISTERED LAND SURVEYOR
TUCSON, ARIZONA
JOB# 84-14