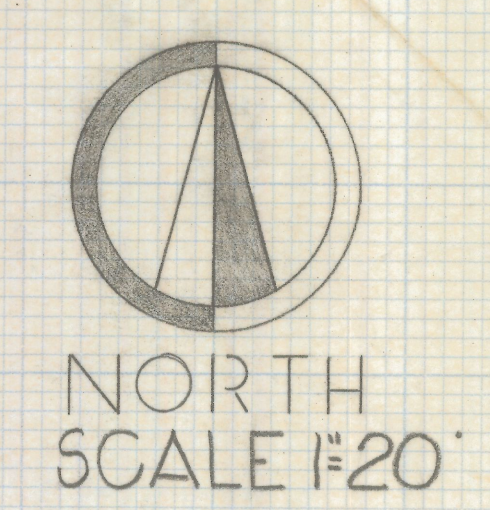
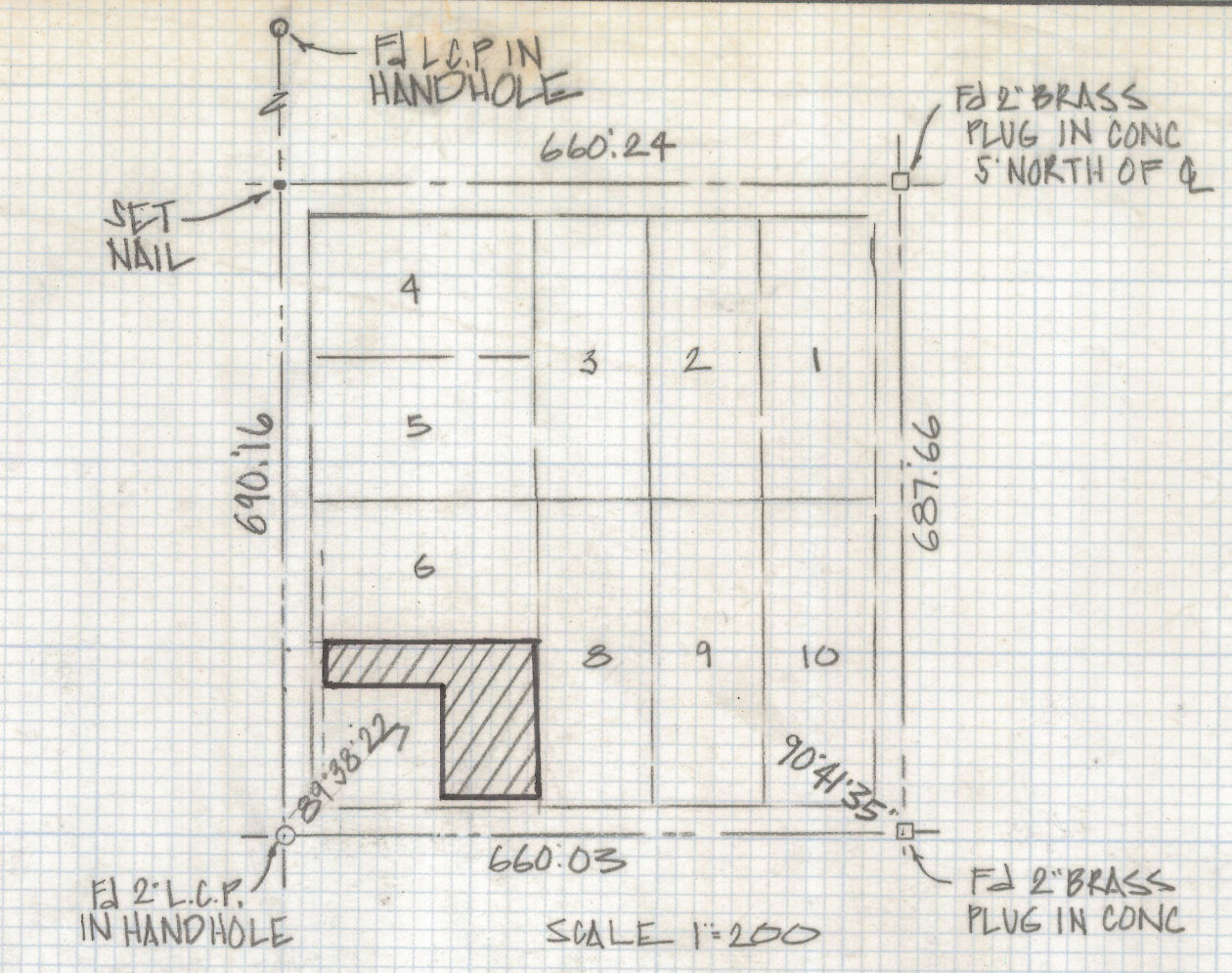
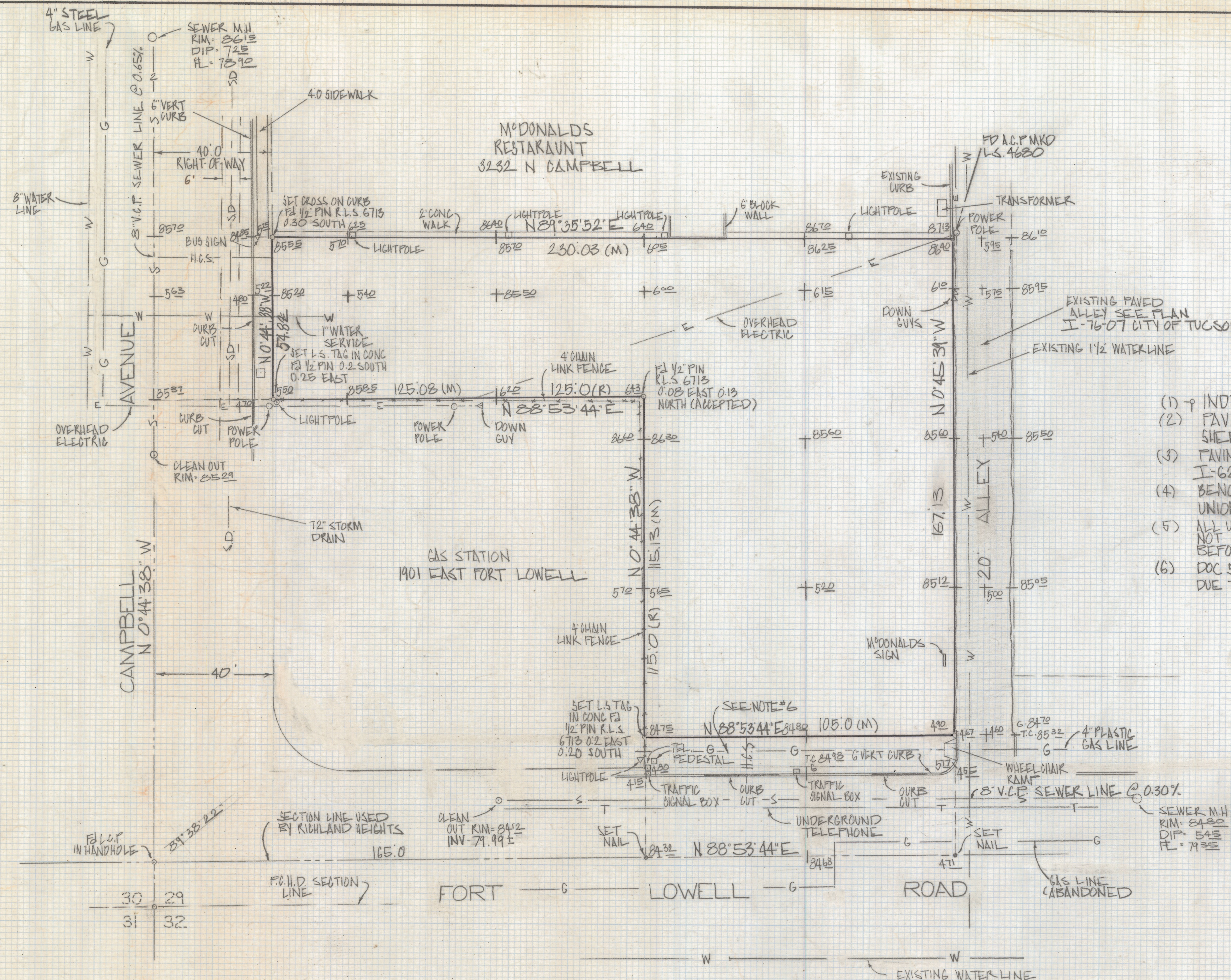


DISCLAIMER:

This unrecorded Record of Survey was donated to the City of Tucson. The City of Tucson provides this data for your personal use "as is." Additionally, the City of Tucson provides this information with the understanding that it is not guaranteed to be accurate, correct or complete and conclusions drawn from such information are the responsibility of the user.



NOTES

- (1) ♀ INDICATES SET 1/2\"/>
- (2) PAVING PLANS PER PIMA COUNTY ARIZONA PLAN N° I-74-08 SHEET 2 OF 9
- (3) PAVING PLANS FOR CAMPBELL PER PIMA COUNTY ARIZONA PLAN N° I-62-11 SHEET 4 OF 9
- (4) BENCH MARK DATUM + ON CONC. BASE OF LIGHTPOLE S.W. CORNER OF UNION GAS STATION N.E. COR CAMPBELL AND FT. LOWELL ELEV 2386.71
- (5) ALL UNDERGROUND UTILITIES WERE TAKEN FROM EXISTING MAPS AND WERE NOT LOCATED IN THE FIELD. IF LOCATION IS CRITICAL CALL BLUE STAKE BEFORE CONSTRUCTION 742-2211
- (6) DOC 5947 PAGE 480 DOES NOT CONVEY THIS 10 FEET TO THE CITY OF TUCSON DUE TO A TYPOGRAPHICAL ERROR BUT DOC 5130 PAGE 133 DEEDS THIS PARCEL

RESULTS OF SURVEY

OF A PORTION OF LOT 7 BLOCK 29 RICHLAND HEIGHTS SUBDIVISION RECORDED IN BOOK 4 OF MAPS AND PLATS AT PAGE 100 IN THE OFFICE OF THE PIMA COUNTY RECORDER PIMA COUNTY ARIZONA



Z-2018-413
 ROBERT F. MELLEN
 REGISTERED LAND SURVEYOR
 TUCSON, ARIZONA
 JOB # 84-22