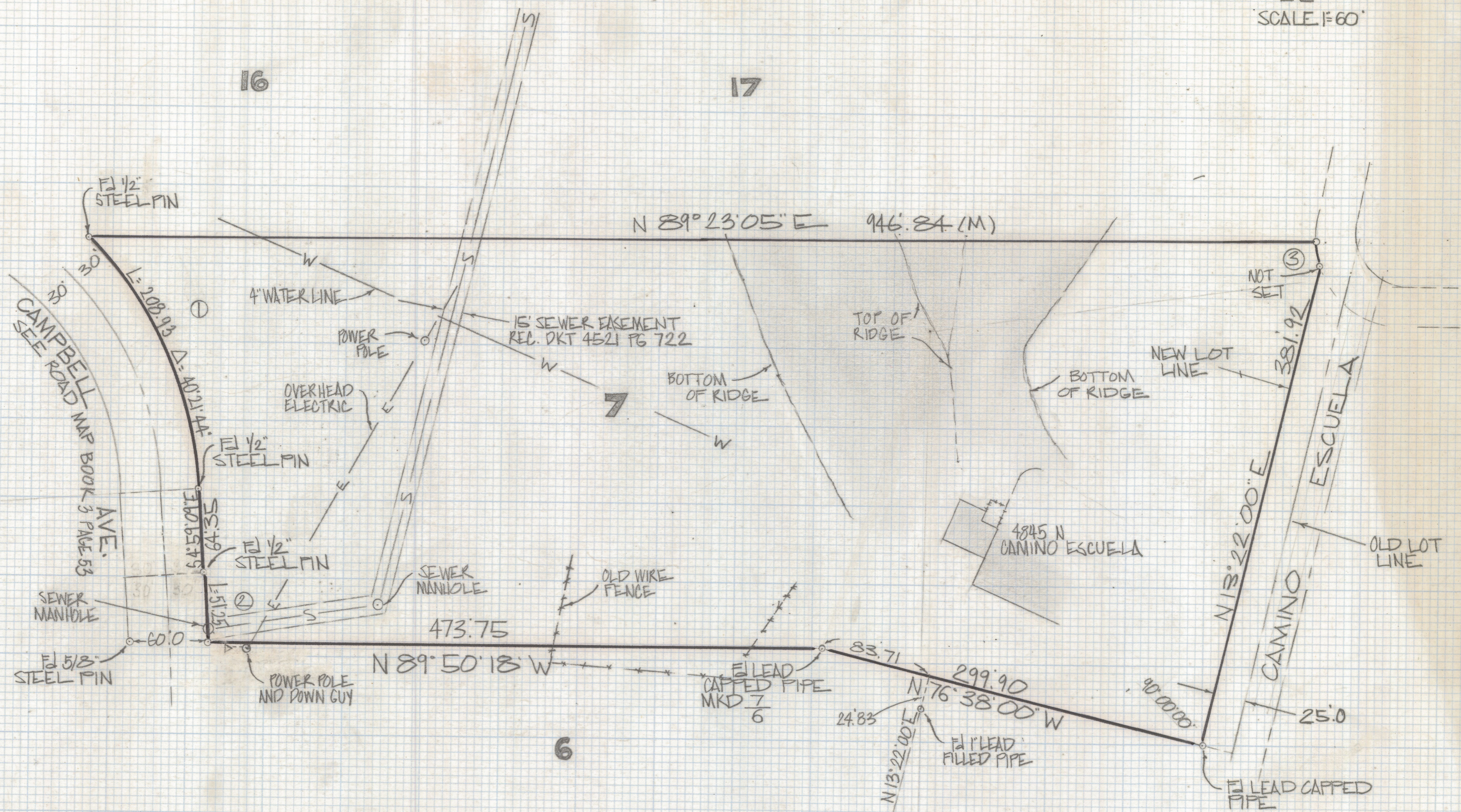
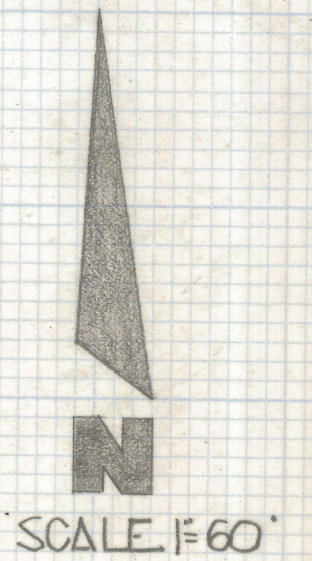


DISCLAIMER:

This unrecorded Record of Survey was donated to the City of Tucson. The City of Tucson provides this data for your personal use "as is." Additionally, the City of Tucson provides this information with the understanding that it is not guaranteed to be accurate, correct or complete and conclusions drawn from such information are the responsibility of the user.

CURVE DATA					
Nº	RADIUS	DELTA	TANGENT	LENGTH	CHORD
1	296.59	40°21'44"	109.01	208.93	204.64
2	604.95	4°51'16"	25.64	51.25	51.24
3	80.0	7°06'07"	4.96	9.92	9.91

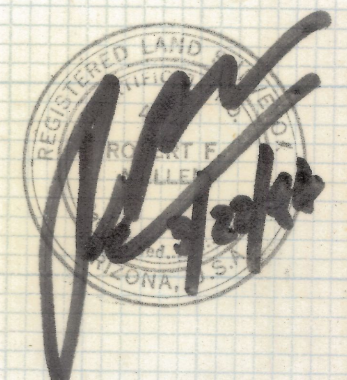


RESULTS OF SURVEY

OF LOT 7 OF CATALINA FOOTHILLS ESTATES RECORDED IN BOOK 6 OF MAPS AND PLATS AT PAGE 57 IN THE OFFICE OF THE PIMA COUNTY RECORDER PIMA COUNTY ARIZONA

NOTES

- (1) - ϕ INDICATES SET 1/2" PIN MKD L.S. 4680 UNLESS NOTED
- (2) THIS 1" LEAD FILLED PIPE MAY HAVE BEEN USED WHEN THE POWER POLES WERE INSTALLED ALONG THE SOUTH LINE OF THIS PROPERTY
- (3) UTILITIES ARE TAKEN FROM AVAILABLE PLANS AND NOT VERIFIED IN THE FIELD SEE PLAN S510-3 PAGE 8



Z-2018-414
 ROBERT F. MELLEN
 REGISTERED LAND SURVEYOR
 TUCSON, ARIZONA
 JOB# 84-24