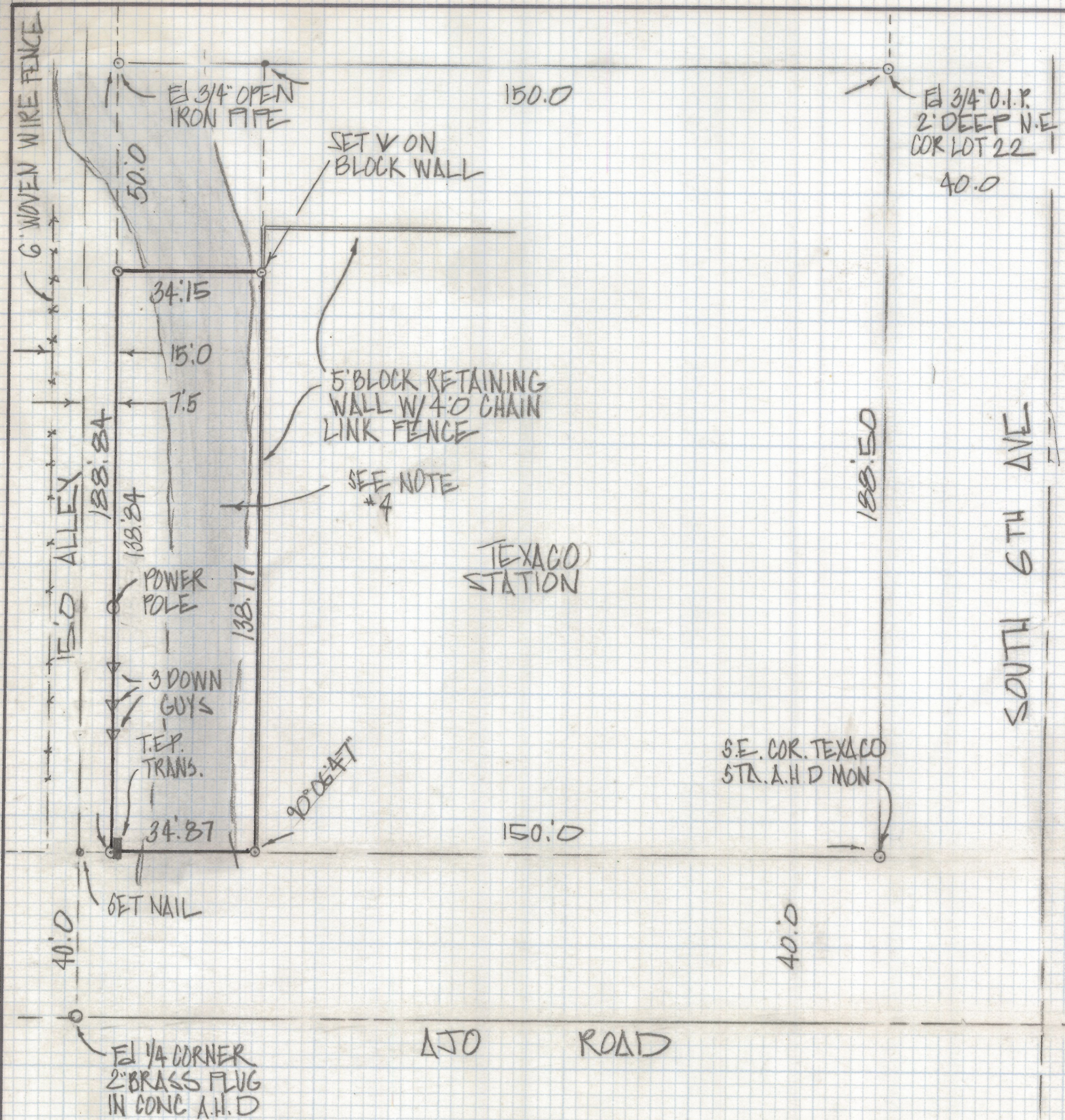


DISCLAIMER:

This unrecorded Record of Survey was donated to the City of Tucson. The City of Tucson provides this data for your personal use "as is." Additionally, the City of Tucson provides this information with the understanding that it is not guaranteed to be accurate, correct or complete and conclusions drawn from such information are the responsibility of the user.



NOTES

- (1) - ϕ INDICATES SET 1/2" PIN MKD L.S. 4680 UNLESS NOTED
- (2) SEE JOBS 79-1, 79-53 AND 81-69
- (3) SEE SEPARATE LETTER ON BLOCK SHORTAGE
- (4) THIS EXISTING DIRT ROAD IS BEING USED AS ACCESS INTO ALLEY

RESULTS OF SURVEY

OFA PORTION OF LOTS 23, 24 AND 25 VETERANS ADDITION
 RECORDED IN BOOK 5 OF MAPS AND PLATS AT PAGE 66
 IN THE OFFICE OF THE PIMA COUNTY RECORDER PIMA
 COUNTY ARIZONA



Z-2018-421
 ROBERT F. MELLEN
 REGISTERED LAND SURVEYOR
 TUCSON ARIZONA
 JOB# 84-37