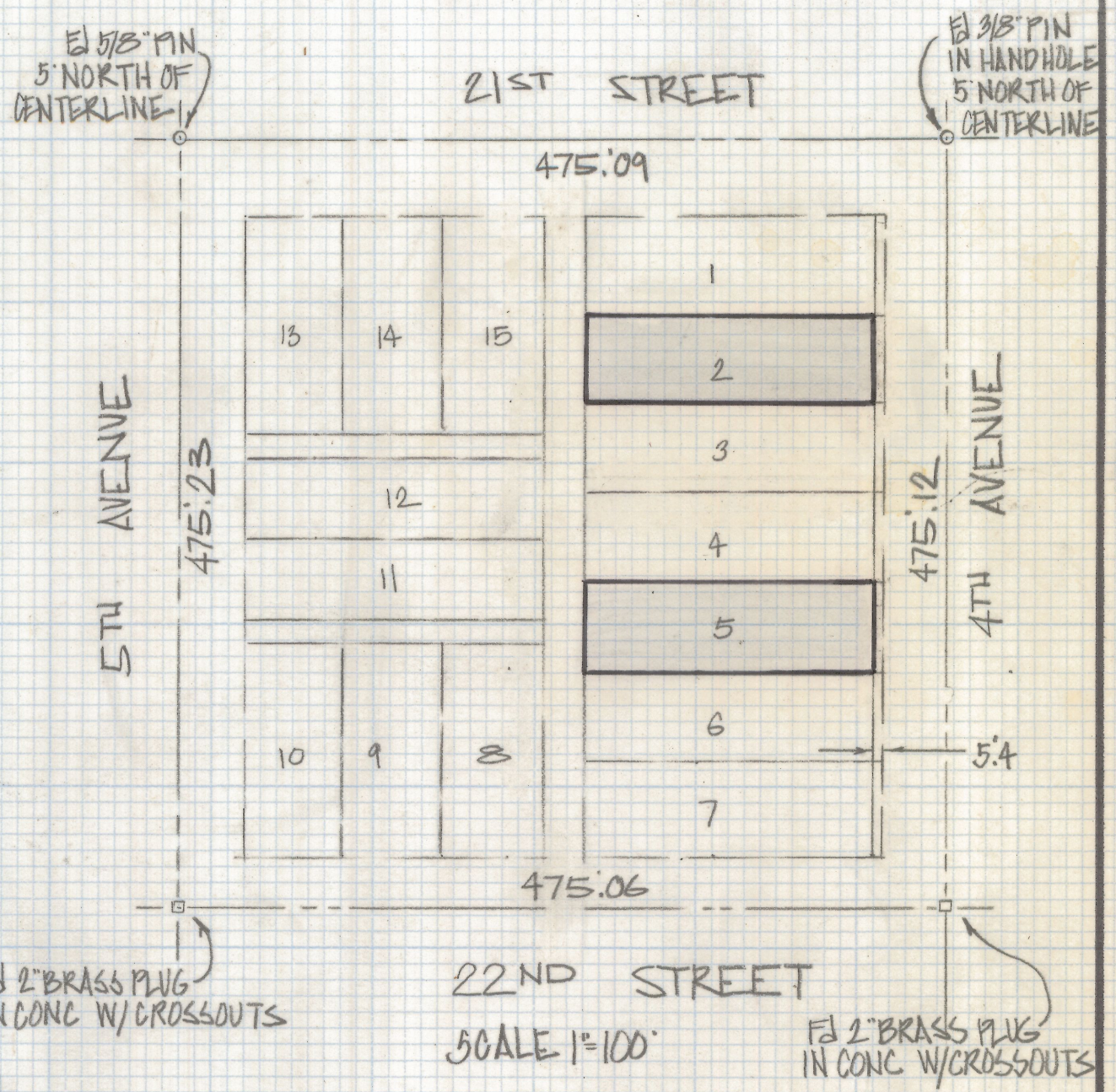


DISCLAIMER:

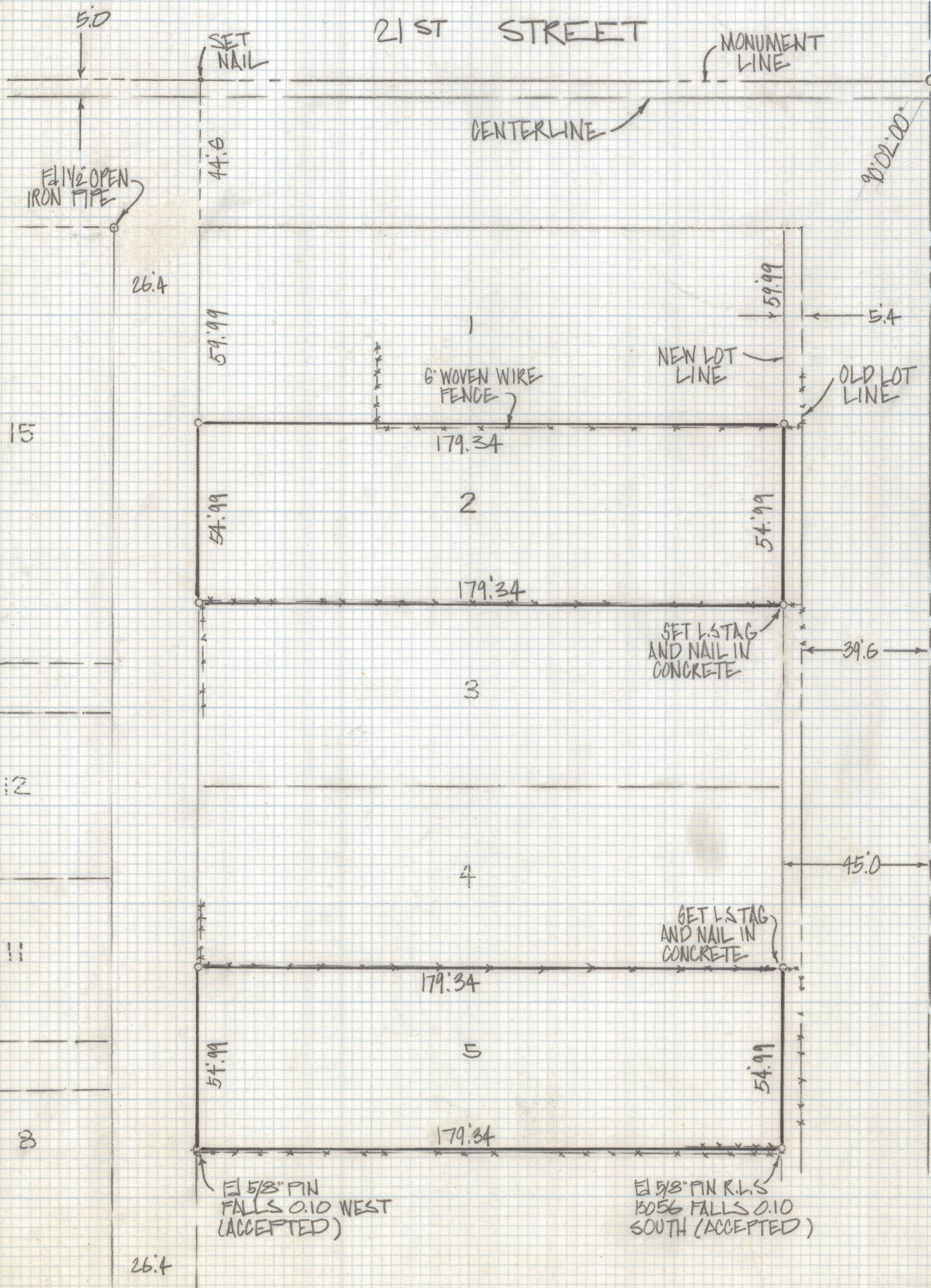
This unrecorded Record of Survey was donated to the City of Tucson. The City of Tucson provides this data for your personal use "as is." Additionally, the City of Tucson provides this information with the understanding that it is not guaranteed to be accurate, correct or complete and conclusions drawn from such information are the responsibility of the user.

RESULTS OF SURVEY

OF LOTS 2 AND 5 OF BLOCK 167 EXCEPT THE EASTERLY 5.4 FEET OF L.W. WAKEFIELD SUBDIVISION RECORDED IN BOOK 2 OF MAPS AND PLATS AT PAGE 37 IN THE OFFICE OF THE PIMA COUNTY RECORDER PIMA COUNTY ARIZONA



22ND STREET
SCALE 1"=100'



NOTES

(1) - p INDICATES SET 1/2" PIN MKD L.S 4680 UNLESS NOTED



ROBERT F. MELLEN
REGISTERED LAND SURVEYOR
TUCSON, ARIZONA
JOB # 84-48

Z-2018-429