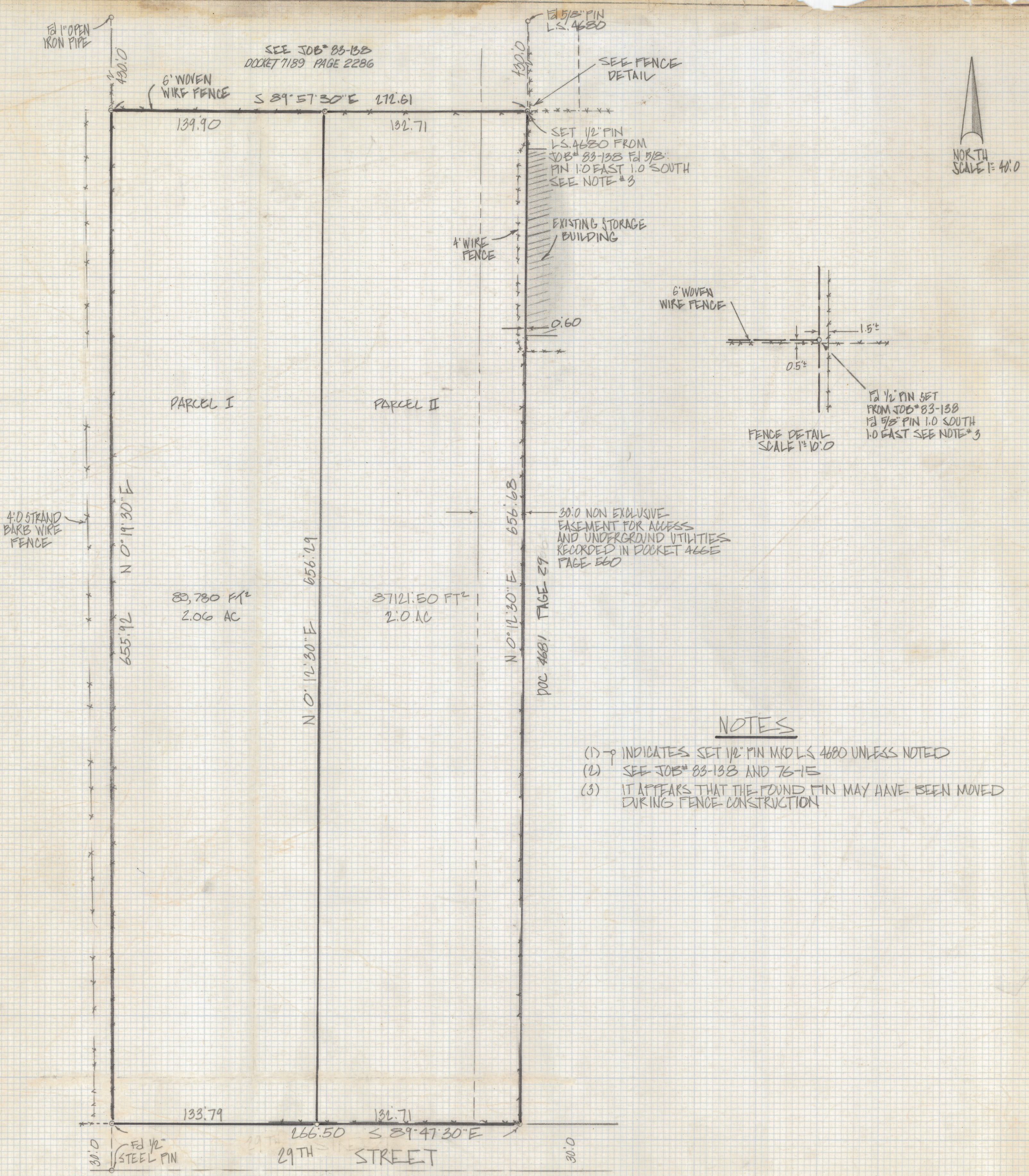


# **DISCLAIMER:**

**This unrecorded Record of Survey was donated to the City of Tucson. The City of Tucson provides this data for your personal use "as is." Additionally, the City of Tucson provides this information with the understanding that it is not guaranteed to be accurate, correct or complete and conclusions drawn from such information are the responsibility of the user.**

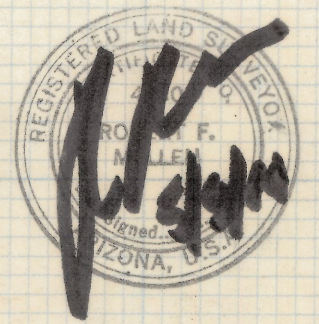


**NOTES**

- (1) -  $\phi$  INDICATES SET 1/2" PIN MKD L.S. 4680 UNLESS NOTED
- (2) - SEE JOB# 83-138 AND 76-15
- (3) - IT APPEARS THAT THE FOUND PIN MAY HAVE BEEN MOVED DURING FENCE CONSTRUCTION

**RESULTS OF SURVEY**

OF A PORTION OF THE SOUTHEAST QUARTER OF THE NORTHEAST QUARTER OF SECTION 23 TOWNSHIP 14 SOUTH OF RANGE 13 EAST GILA AND SALT RIVER BASE AND MERIDIAN PINA COUNTY ARIZONA



Z-2018-438  
ROBERT F. MELLEN  
REGISTERED LAND SURVEYOR  
TUCSON, ARIZONA  
JOB# 84-64