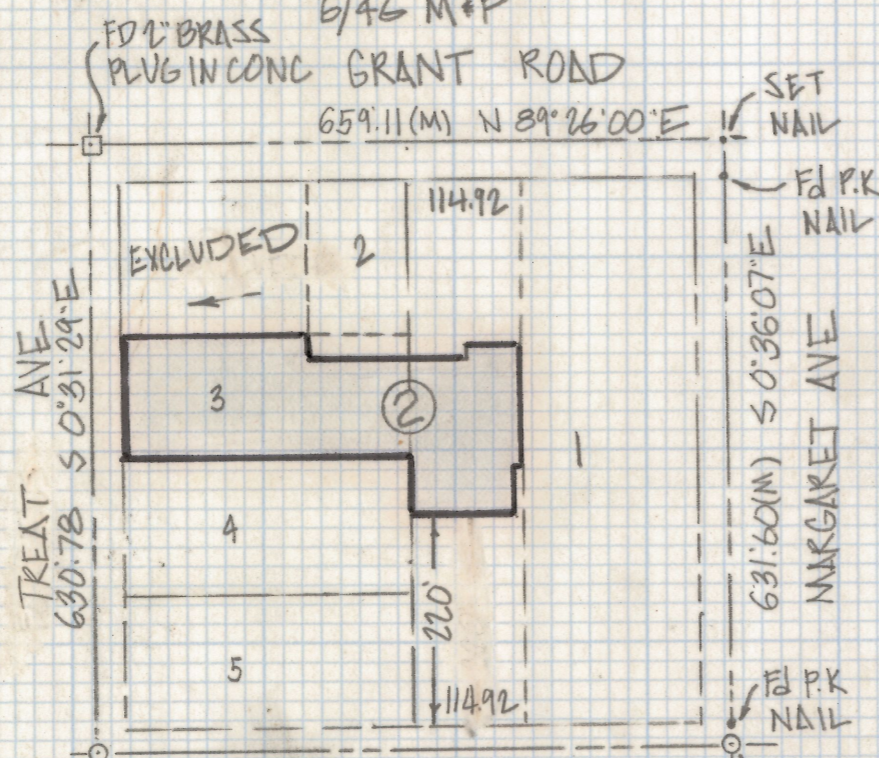


# **DISCLAIMER:**

**This unrecorded Record of Survey was donated to the City of Tucson. The City of Tucson provides this data for your personal use "as is." Additionally, the City of Tucson provides this information with the understanding that it is not guaranteed to be accurate, correct or complete and conclusions drawn from such information are the responsibility of the user.**



**BLOCK TWO  
NEW DEAL ACRES**

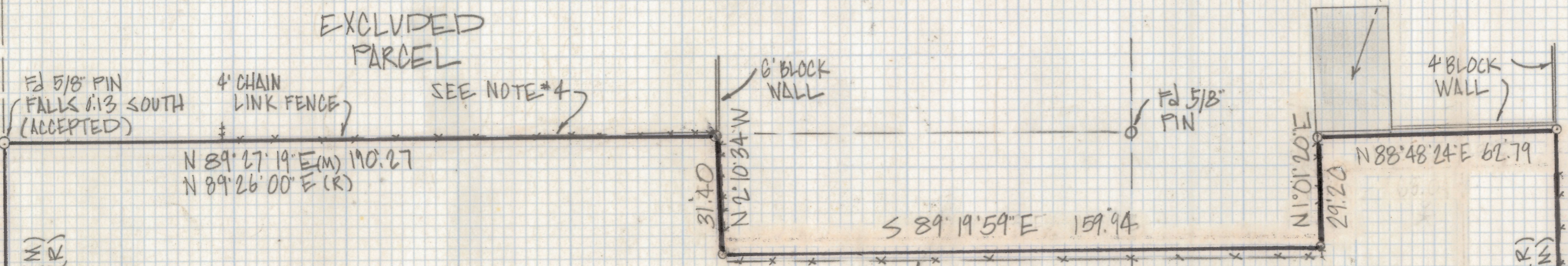


Ed 1/2" PIN IN HANDHOLE 5' NORTH OF CENTERLINE  
659.96 (M) N 89° 30' 16" E  
Edison ST.  
SCALE 1"=200.0  
Ed HANDHOLE N/CROSSOUTS 5' NORTH OF CENTERLINE

EXISTING BUILDING FALLS 1.0' NORTH OF PROPERTY LINE

TREAT AVENUE

30.0



EXCLUDED PARCEL  
SEE NOTE #4

LOT 3

LOT 1

54,000. ± FT<sup>2</sup>  
1.24 ACRES

SEE NOTE #4  
299.74 (R) N 89° 30' 16" E (R)  
299.72 (M) N 89° 33' 32" E (M)

Ed 5/8" PIN FALLS 0.15 SOUTH (ACCEPTED)

N 89° 01' 11" E 6.09

Ed 5/8" PIN FALLS 0.10 SOUTH (ACCEPTED)

Ed 5/8" PIN

5.0 CHAIN LINK FENCE

6' CHAIN LINK FENCE W/SLATS

6' WOOD FENCE

Ed 5/8" PIN FALLS 0.10 NORTH 0.30 WEST (ACCEPTED)

30.0

LOT 4

SCALE 1"=300.0

**NOTES**

- (1) - 9 INDICATES SET 1/2" PIN MKD L.S. 4680 UNLESS NOTED
- (2) - M - MEASURED
- (3) - R - MAP OR DEED RECORD
- (4) - THIS BLOCK APPEARS TO HAVE A 10'± SHORTAGE IN A NORTH SOUTH DIRECTION. THIS SURVEY ACCEPTS THE FOUND MONUMENTS FOR LOT 3

**RESULTS OF SURVEY**

OF A PORTION OF LOTS ONE AND THREE BLOCK TWO OF NEW DEAL ACRES RECORDED IN BOOK 6 OF MAPS AND PLATS AT PAGE 46 IN THE OFFICE OF THE PIMA COUNTY RECORDER PIMA COUNTY ARIZONA



Z-2018-451

ROBERT F. MELLEN  
REGISTERED LAND SURVEYOR  
TUCSON, ARIZONA  
JOB # 84-78

REVISED 6/4/84