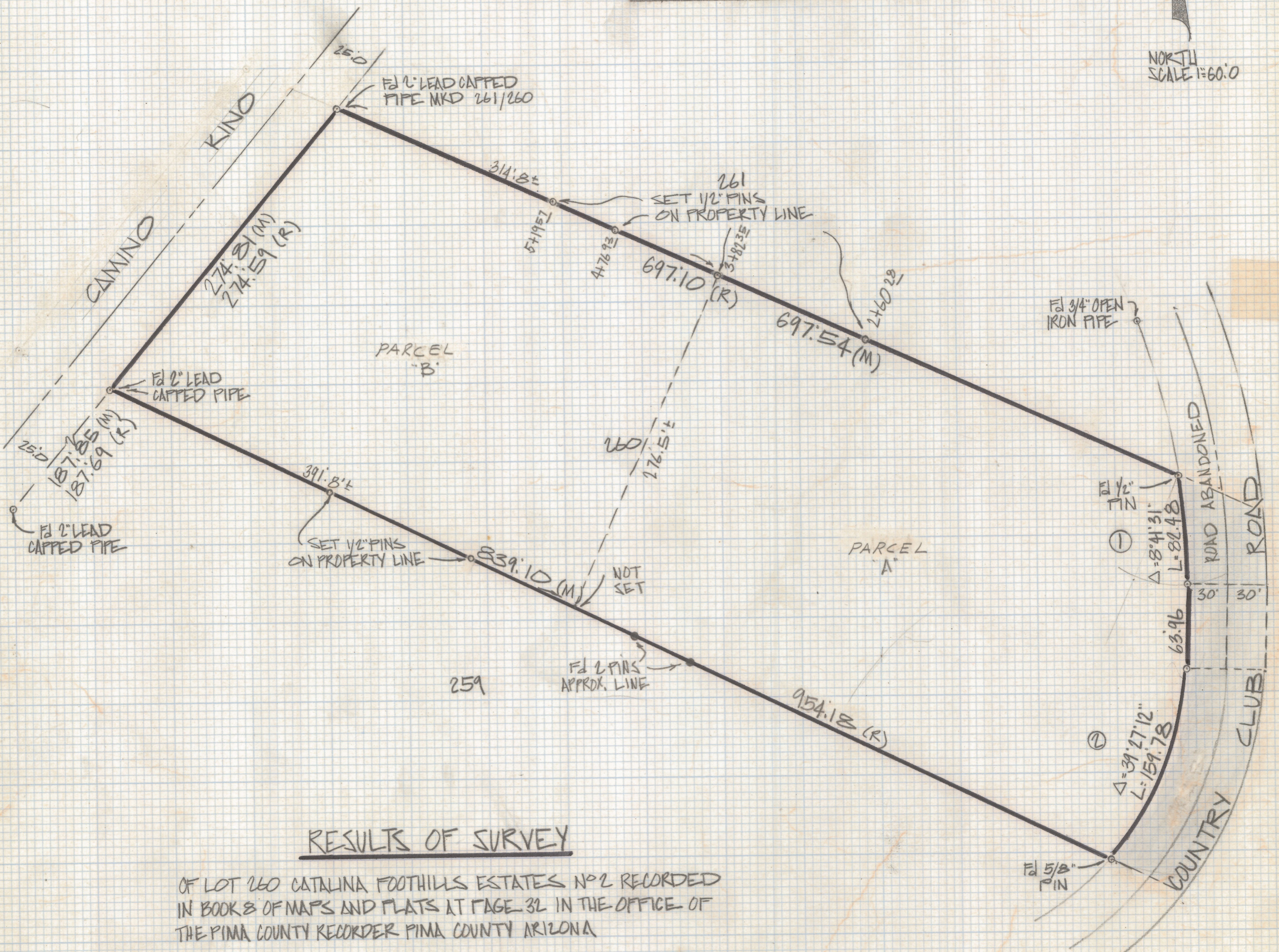


# **DISCLAIMER:**

**This unrecorded Record of Survey was donated to the City of Tucson. The City of Tucson provides this data for your personal use "as is." Additionally, the City of Tucson provides this information with the understanding that it is not guaranteed to be accurate, correct or complete and conclusions drawn from such information are the responsibility of the user.**

| CURVE DATA |        |           |         |        |        |
|------------|--------|-----------|---------|--------|--------|
| NO         | RADIUS | DELTA     | TANGENT | LENGTH | CHORD  |
| 1          | 543.69 | 8°41'31"  | 41.32   | 82.48  | 82.40  |
| 2          | 232.04 | 39°27'12" | 83.20   | 159.78 | 156.64 |

NORTH  
SCALE 1"=60.0'



RESULTS OF SURVEY

OF LOT 260 CATALINA FOOTHILLS ESTATES NO 2 RECORDED IN BOOKS OF MAPS AND PLATS AT PAGE 32 IN THE OFFICE OF THE PIMA COUNTY RECORDER PIMA COUNTY ARIZONA

NOTES

- (1) -  $\odot$  INDICATES SET 1/2" PIN MKD L.S. 4680 UNLESS NOTED
- (2) M- MEASURED
- (3) R- MAP OR DEED RECORD
- (4) AREA OF LOT 260 - 220,200 FT<sup>2</sup> 4.6 AC (MAP SHOWS 6.8 ± ACRES)
- (5) AREA OF ROAD WHICH HAS BEEN ABANDONED 18,300 FT<sup>2</sup> 0.42 ACRES ±
- (6) AREA PARCEL "A" - 124,600 FT<sup>2</sup> 2.4 AC ± (NOT INCLUDING ROAD)
- (7) AREA PARCEL "B" - 95,600 FT<sup>2</sup> 2.2 AC ±



Z-2018-452

ROBERT F. WELLEN  
REGISTERED LAND SURVEYOR  
TULSON, ARIZONA  
JOB# 84-79