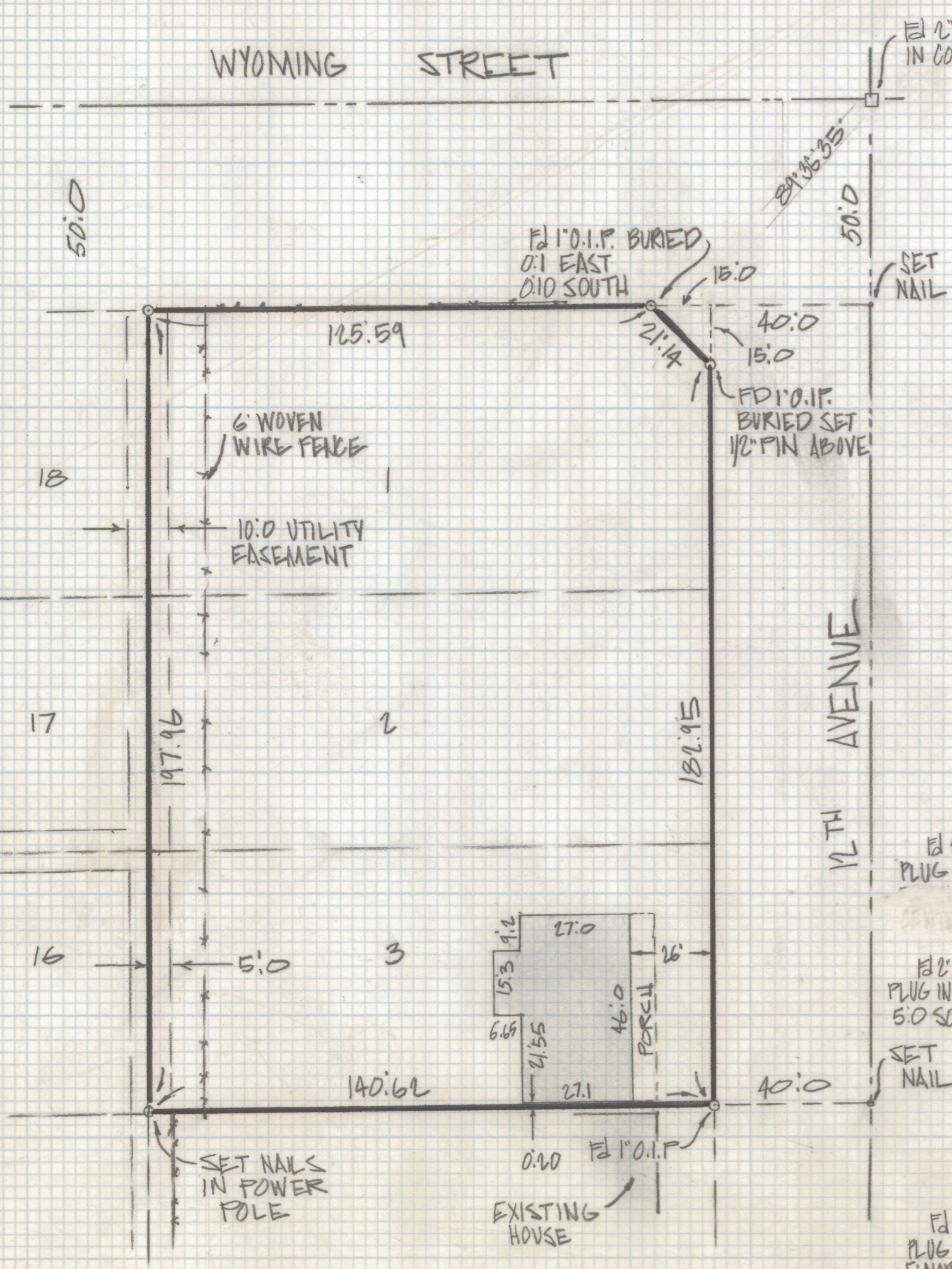


DISCLAIMER:

This unrecorded Record of Survey was donated to the City of Tucson. The City of Tucson provides this data for your personal use "as is." Additionally, the City of Tucson provides this information with the understanding that it is not guaranteed to be accurate, correct or complete and conclusions drawn from such information are the responsibility of the user.

WYOMING STREET

NORTH
SCALE 1"=30.0

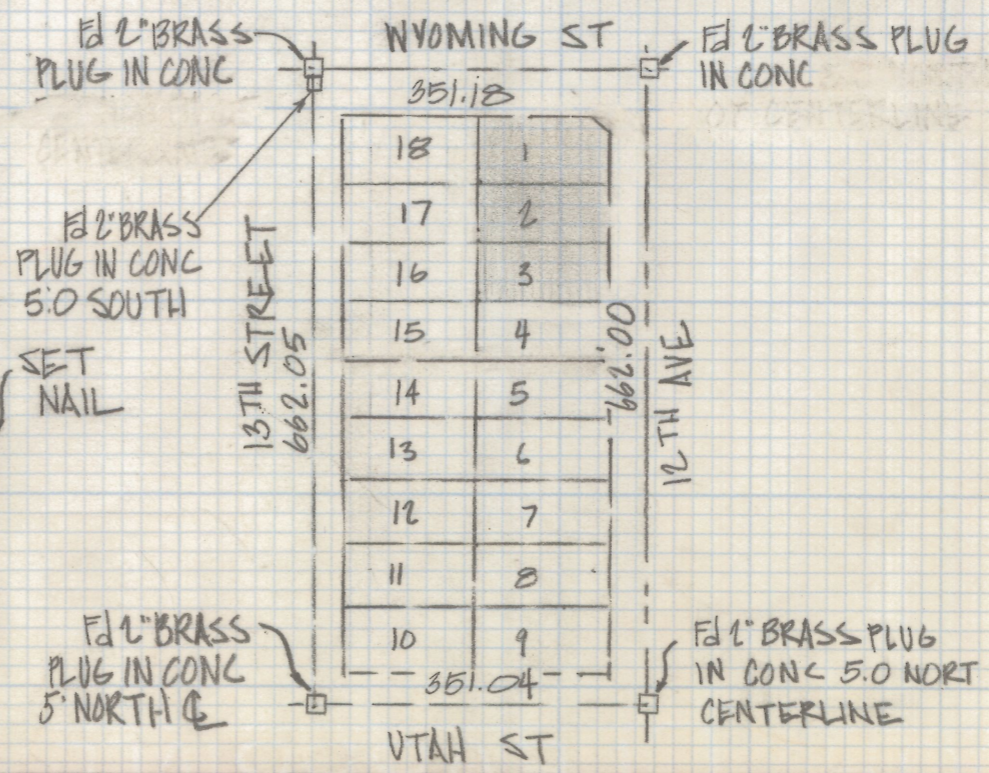


RESULTS OF SURVEY

OF LOTS 1, 2 AND 3 BLOCK 97 NATIONAL CITY #9 RECORDED IN BOOK 8 OF MAPS AND PLATS AT PAGE 85 IN THE OFFICE OF THE PINA COUNTY RECORDER PINA COUNTY ARIZONA

NOTES

- (1) ○ INDICATES SET 1/2" PIN MKD L.S. 4680 UNLESS NOTED
- (2) O.I.P. - OPEN IRON PIPE



Z-2018-455
ROBERT F. MELLEN
REGISTERED LAND SURVEYOR
TUCSON, ARIZONA
JOB# 84-82