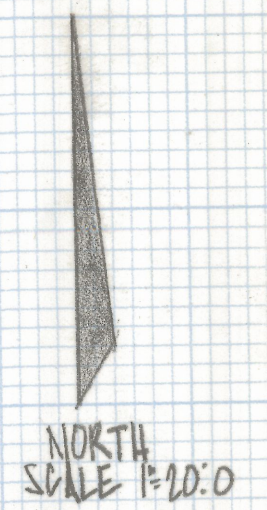
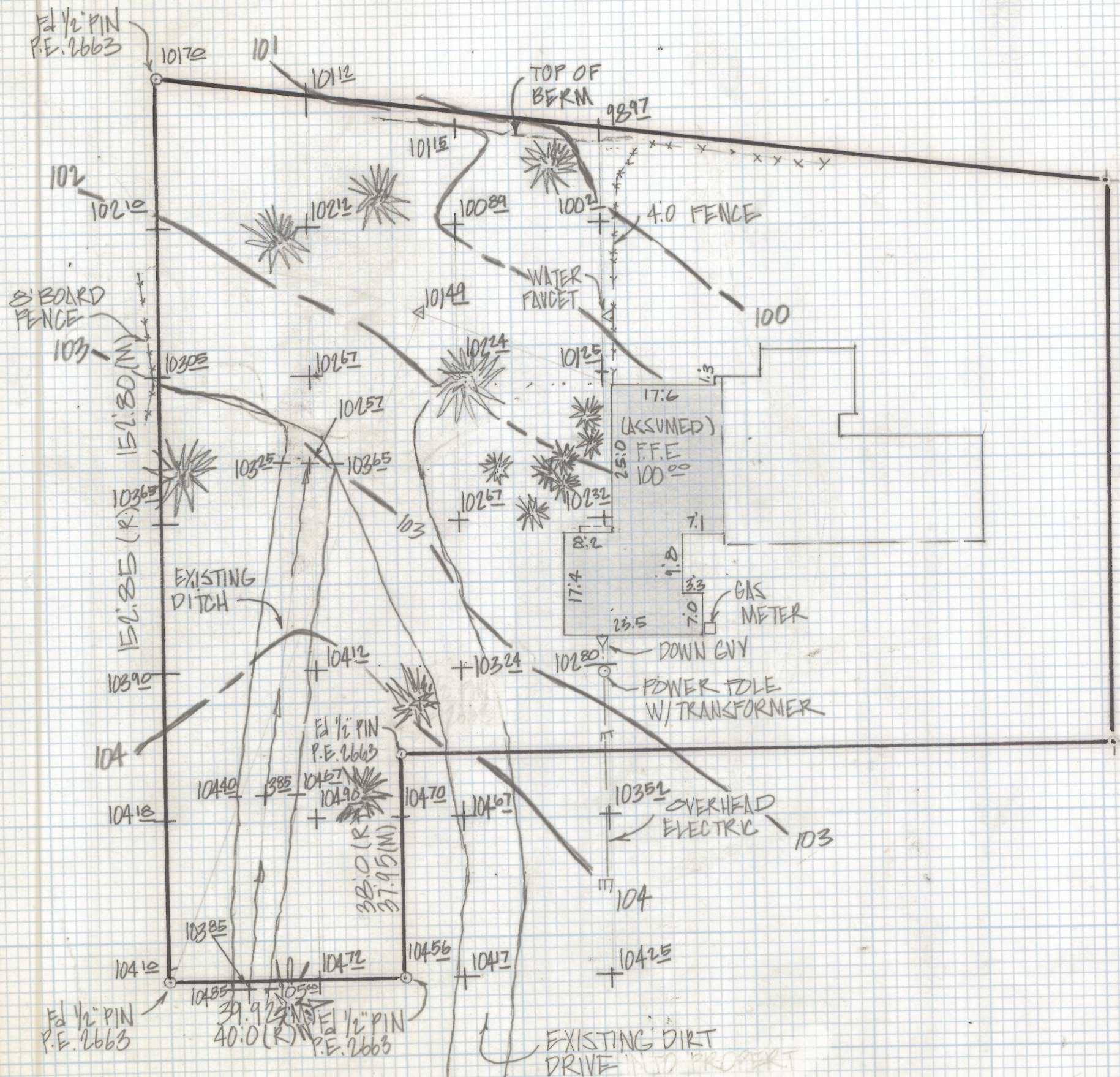


# **DISCLAIMER:**

**This unrecorded Record of Survey was donated to the City of Tucson. The City of Tucson provides this data for your personal use "as is." Additionally, the City of Tucson provides this information with the understanding that it is not guaranteed to be accurate, correct or complete and conclusions drawn from such information are the responsibility of the user.**





TOPOGRAPHICAL SURVEY

OF  
 A PORTION OF THE NORTHEAST QUARTER OF THE  
 NORTHEAST QUARTER SECTION 35 TOWNSHIP 13  
 SOUTH OF RANGE 14 EAST GILA AND SALT RIVER BASE  
 AND MERIDIAN PIMA COUNTY ARIZONA

NOTES

- (1) INDICATES MESQUITE TREE
- (2) THIS IS NOT A BOUNDARY SURVEY
- (3) M - MEASURED
- (4) R - MAP OR DEED RECORD



Z-2018-458  
 ROBERT F. MELLEN  
 REGISTERED LAND SURVEYOR  
 TUCSON, ARIZONA  
 JOB# 84-87