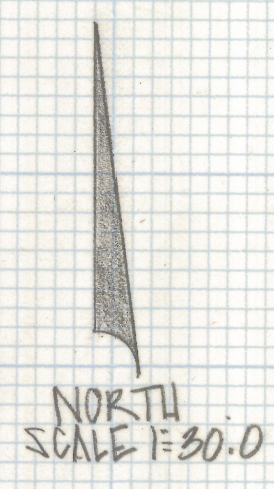
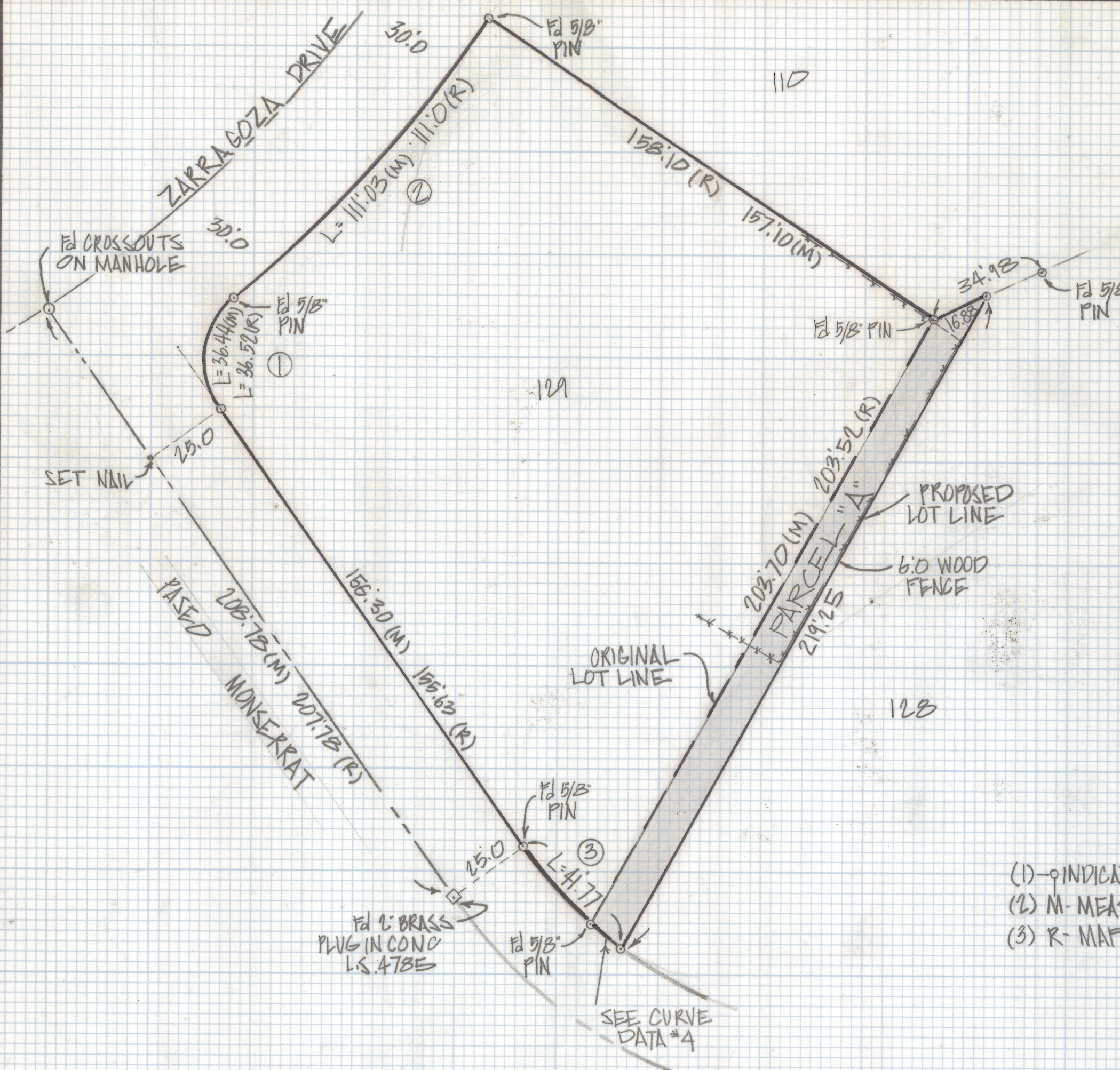


DISCLAIMER:

This unrecorded Record of Survey was donated to the City of Tucson. The City of Tucson provides this data for your personal use "as is." Additionally, the City of Tucson provides this information with the understanding that it is not guaranteed to be accurate, correct or complete and conclusions drawn from such information are the responsibility of the user.



CURVE DATA					
Nº	RADIUS	DELTA	TANGENT	LENGTH	CHORD
1	25.0	85°31'05	22.32	36.44	33.30
2	430.0	14°47'39	55.82	111.03	110.72
3	125.0	19°08'52	21.08	41.77	41.58
4	125.0	5°23'42	5.89	11.77	11.77

NOTES

- (1) - INDICATES SET 1/2" PIN MKD L.S. 4680 UNLESS NOTED
- (2) - M - MEASURED
- (3) - R - MAP OR DEED RECORD

RESULTS OF SURVEY

OF LOT 129 AND A PORTION OF LOT 128 RANCHOS DE LA CAÑADA
 RECORDED IN BOOK 28 OF MAPS AND PLATS AT PAGE 99 IN THE OFFICE OF
 THE PIMA COUNTY RECORDER PIMA COUNTY ARIZONA



Z-2018-459
 ROBERT F. MELLEN
 REGISTERED LAND SURVEYOR
 TUCSON ARIZONA
 JOB # 84-88