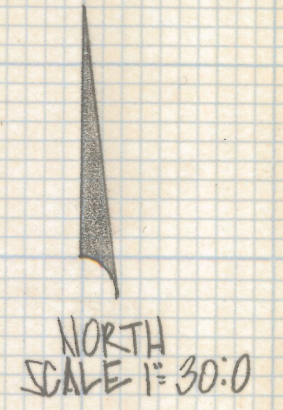
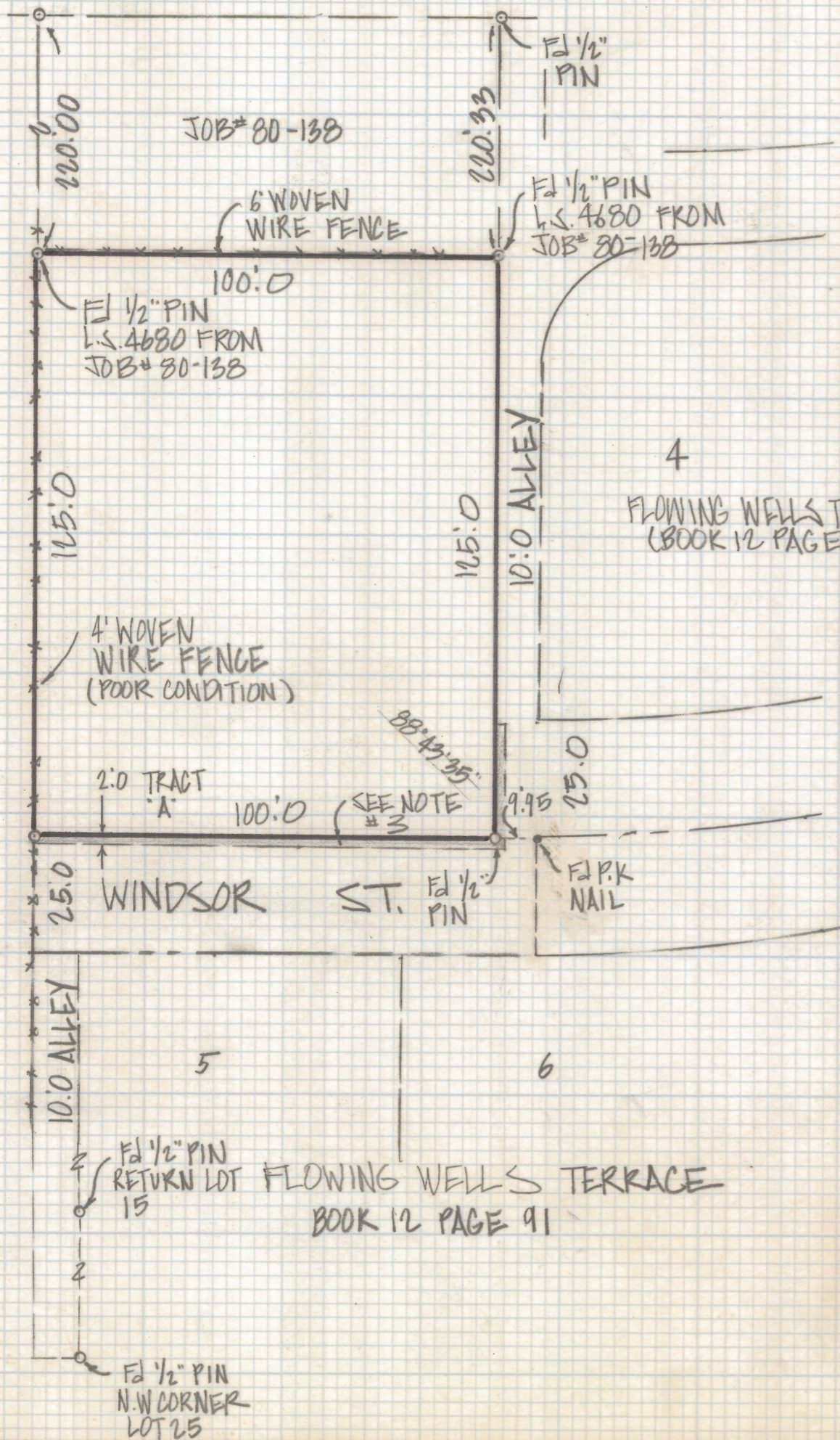


# **DISCLAIMER:**

**This unrecorded Record of Survey was donated to the City of Tucson. The City of Tucson provides this data for your personal use "as is." Additionally, the City of Tucson provides this information with the understanding that it is not guaranteed to be accurate, correct or complete and conclusions drawn from such information are the responsibility of the user.**

PRINCE ROAD



RESULTS OF SURVEY

OF A PORTION OF THE SOUTHEAST QUARTER OF SECTION 27,  
TOWNSHIP 13 SOUTH, RANGE 13 EAST, GILA AND SALT  
RIVER BASE AND MERIDIAN, PIMA COUNTY ARIZONA

4  
FLOWING WELLS TERRACE  
(BOOK 12 PAGE 91)

NOTES

- (1) ♀ INDICATES SET 1/2" PIN MK'D L.S. 4680 UNLESS NOTED
- (2) SEE JOB # 80-138
- (3) THIS 2.0' PARCEL SHOWN ON FLOWING WELLS TERRACE MAY HAVE BEEN DESIGNED TO PREVENT ACCESS FROM WINDSOR STREET



Z-2018-462  
ROBERT F. MELLEN  
REGISTERED LAND SURVEYOR  
TUCSON, ARIZONA  
JOB # 84-94