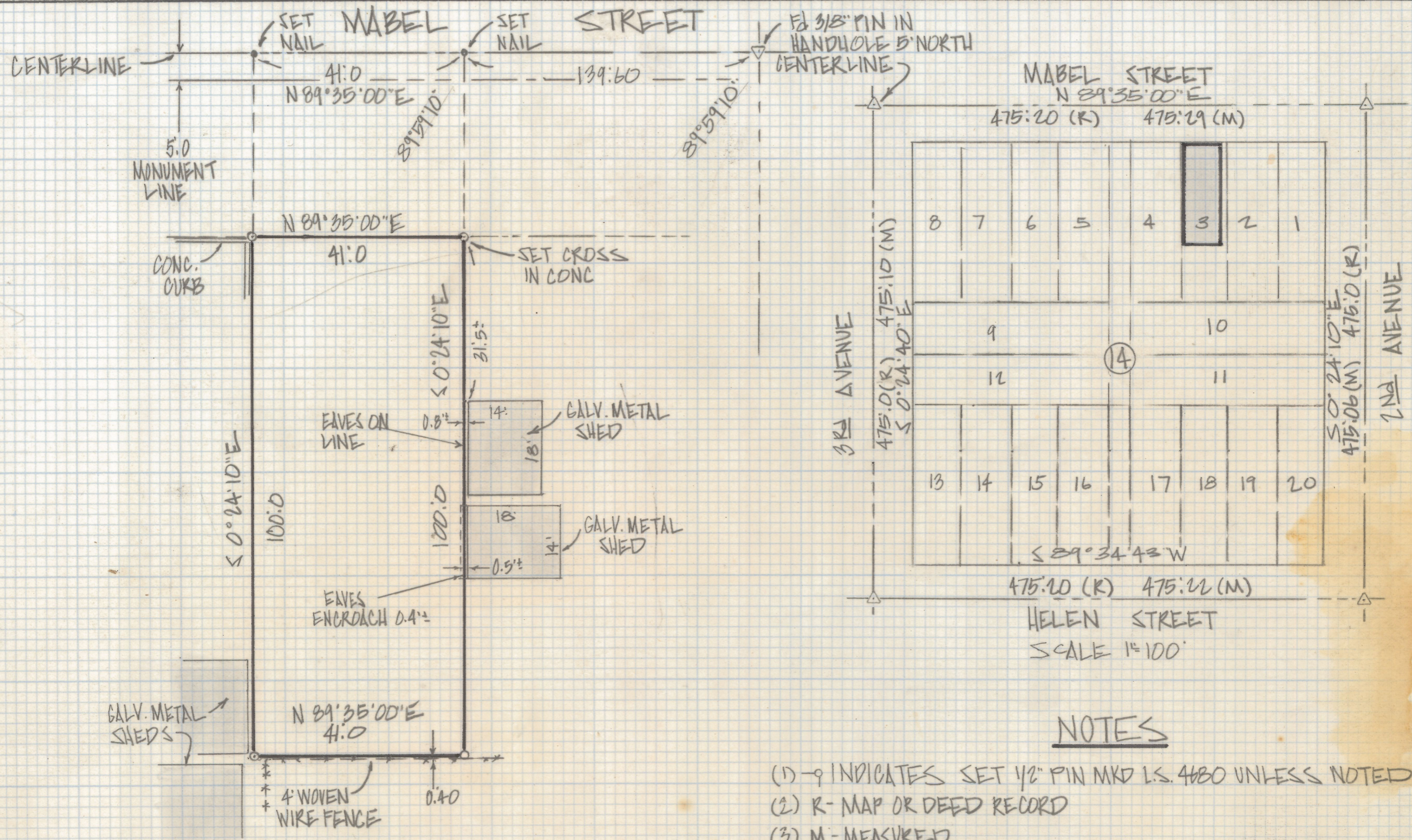


# **DISCLAIMER:**

**This unrecorded Record of Survey was donated to the City of Tucson. The City of Tucson provides this data for your personal use "as is." Additionally, the City of Tucson provides this information with the understanding that it is not guaranteed to be accurate, correct or complete and conclusions drawn from such information are the responsibility of the user.**



**RESULTS OF SURVEY**

OF A PORTION OF LOT 3 BLOCK 14 FELDMAN'S ADDITION RECORDED IN BOOK 2 OF MAPS AND PLATS AT PAGE 35 IN THE OFFICE OF THE PIMA COUNTY RECORDER PIMA COUNTY ARIZONA

**NOTES**

- (1) - q INDICATES SET 1/2" PIN MKD L.S. 4680 UNLESS NOTED
- (2) - R - MAP OR DEED RECORD
- (3) - M - MEASURED



Z-2018-471  
 ROBERT F. MELLEN  
 REGISTERED LAND SURVEYOR  
 TUCSON, ARIZONA  
 JOB # 84-104