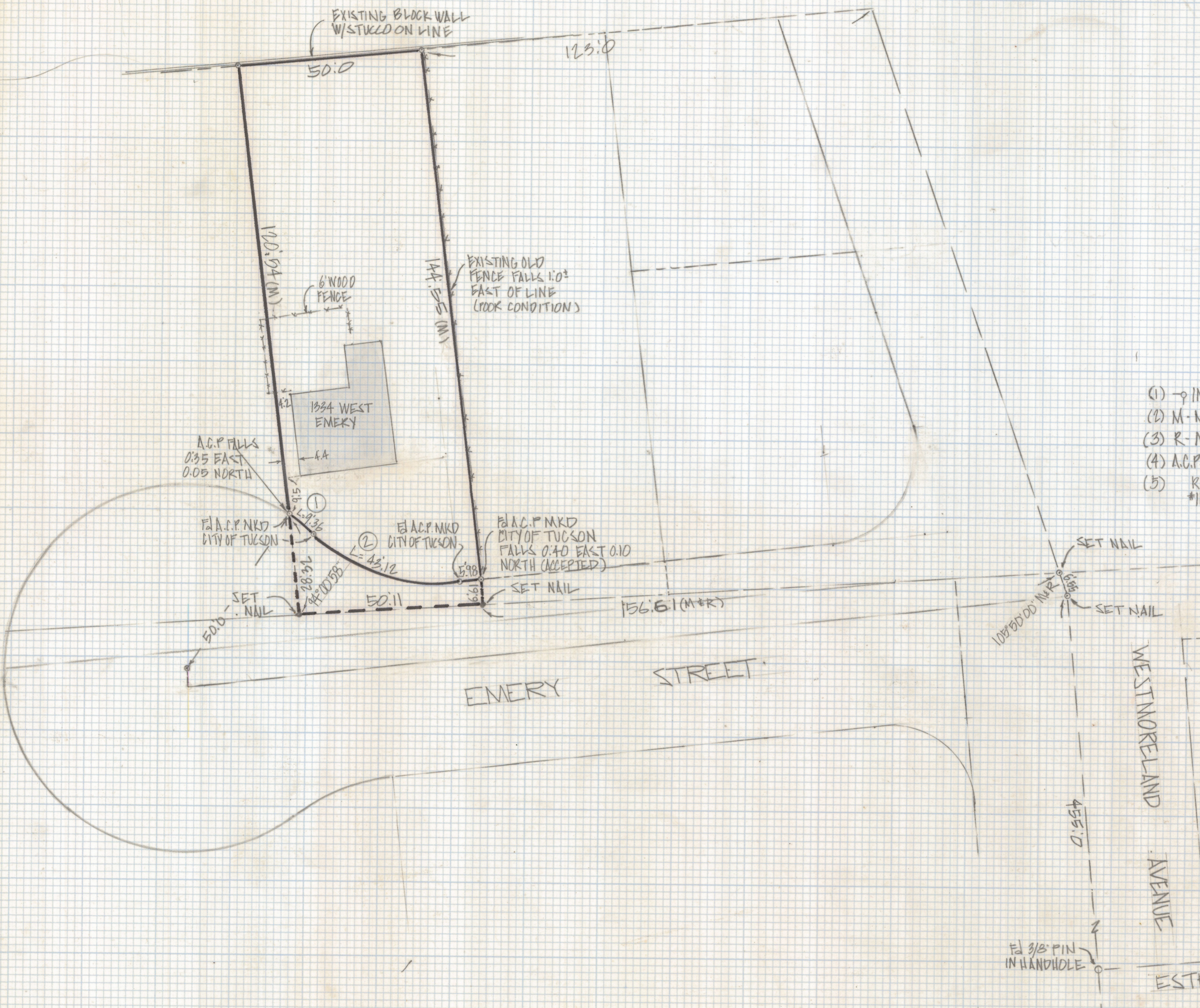
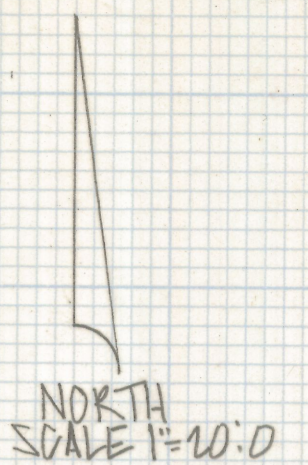


DISCLAIMER:

This unrecorded Record of Survey was donated to the City of Tucson. The City of Tucson provides this data for your personal use "as is." Additionally, the City of Tucson provides this information with the understanding that it is not guaranteed to be accurate, correct or complete and conclusions drawn from such information are the responsibility of the user.

CURVE DATA					
NO	RADIUS	DELTA	TANGENT	LENGTH	CHORD
①	50.0'	104°3'48"	4.70	9.36	9.35
②	50.0'	49°25'00"	23.01	43.12	41.80



NOTES

- (1) → INDICATES SET 1/2" PIN MKD L.S. 4000 UNLESS NOTED
- (2) M - MEASURED
- (3) R - MAP OR DEED RECORD
- (4) A.C.P. ALUMINUM CAPPED PIN MKD CITY OF TUCSON FOUND
- (5) REFERENCE CITY OF TUCSON PLANK S-518 FIELD BOOK #1105 PLAN I-68-5 R 68-12

RESULTS OF SURVEY

OF A PORTION OF LOT 22 IN SECTION 11 TOWNSHIP 14 SOUTH OF RANGE 13 EAST GILA AND SALT RIVER BASE AND MERIDIAN PIMA COUNTY ARIZONA ACCORDING TO THE SURVEY THEREOF MADE BY THEO F. WHITE UNDER ACT OF CONGRESS APPROVED FEBRUARY 5, 1875 (PER DOC 6221 PAGE 486)



Z-2018-472
 ROBERT F. MELLEN
 REGISTERED LAND SURVEYOR
 TUCSON, ARIZONA
 JOB # 84-106