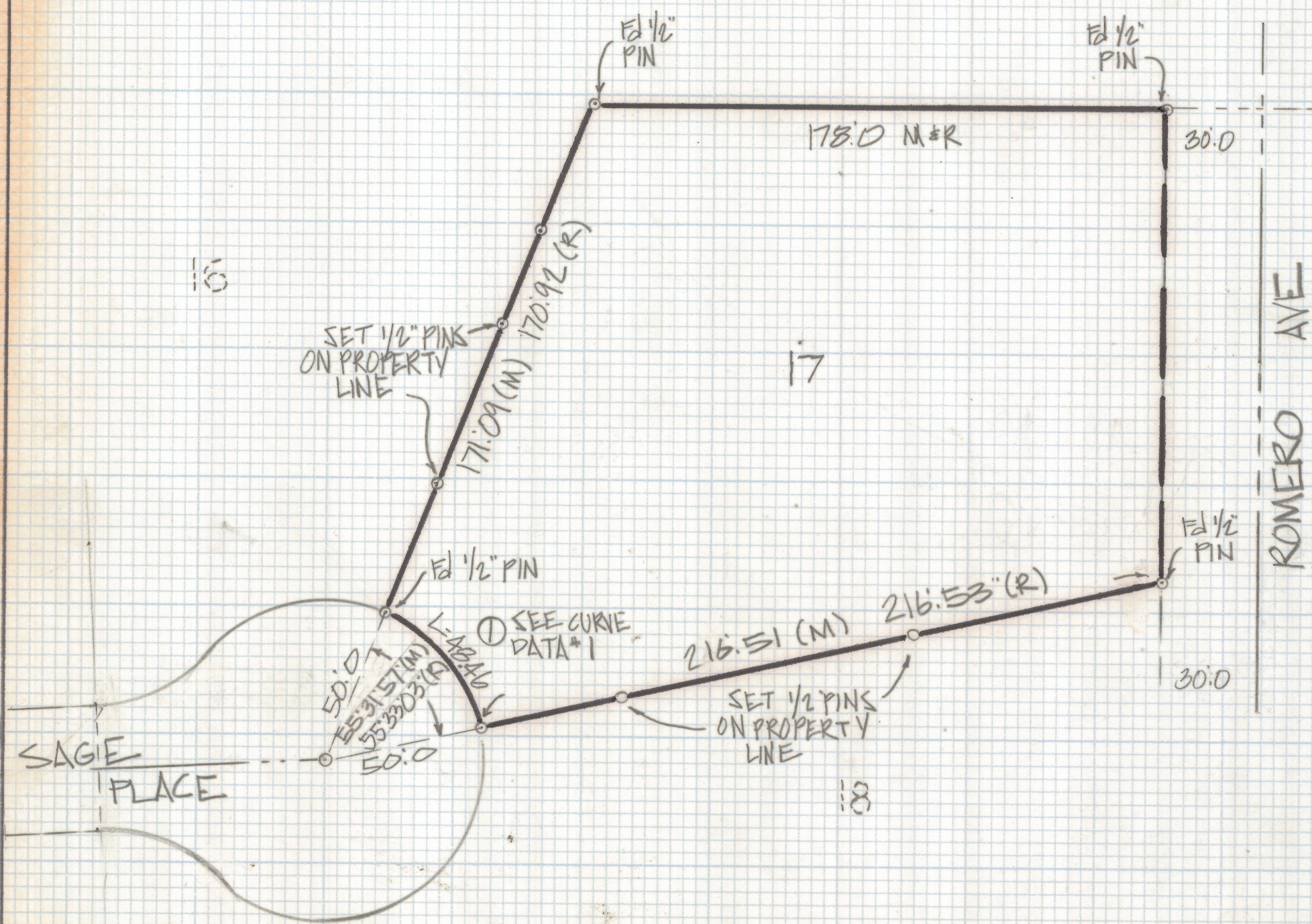


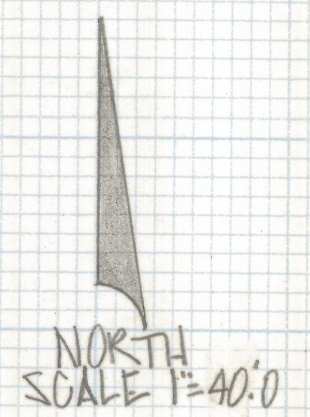
DISCLAIMER:

This unrecorded Record of Survey was donated to the City of Tucson. The City of Tucson provides this data for your personal use "as is." Additionally, the City of Tucson provides this information with the understanding that it is not guaranteed to be accurate, correct or complete and conclusions drawn from such information are the responsibility of the user.



SAGE ST.

ROMERO AVE.



NOTES

- (1) - \circ INDICATES SET 1/2" PIN MKD L.S. 4680 UNLESS NOTED
- (2) M-MEASURED
- (3) R-MAP OR DEED RECORD
- (4) SEE JOBS 84-105 AND 81-34

CURVE DATA					
Nº	RADIUS	DELTA	TANGENT	LENGTH	CHORD
1	50.0	55°31'57"	26.32	48.46	46.59

RESULTS OF SURVEY

OF LOT 17 OF LA ESTANCIA RECORDED IN BOOK 30 OF MAPS AND PLATS AT PAGE 4 IN THE OFFICE OF THE PIMA COUNTY RECORDER PIMA COUNTY ARIZONA



Z-2018-484
 ROBERT F. MELLEN
 REGISTERED LAND SURVEYOR
 TUCSON, ARIZONA
 JOB# 84-121