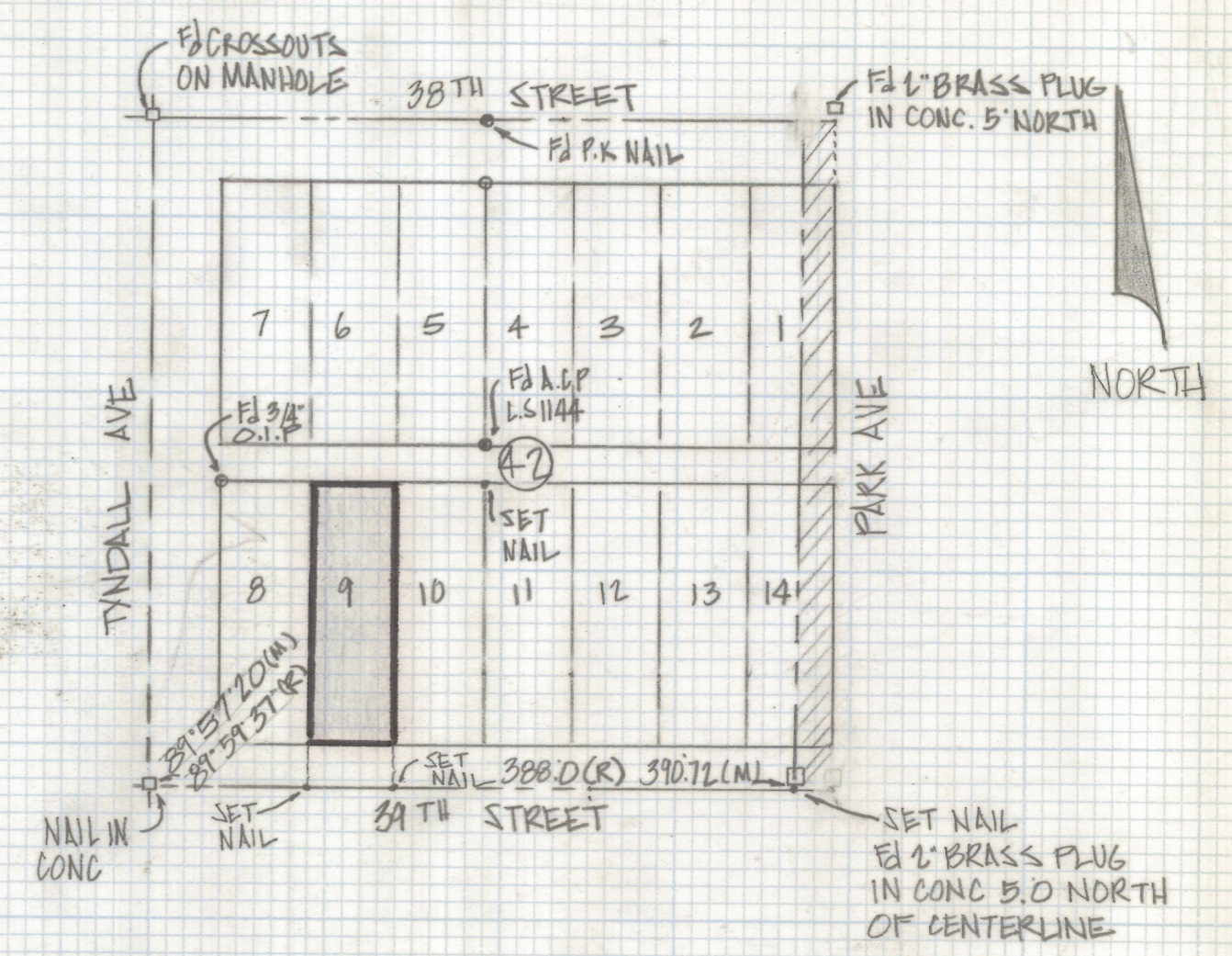
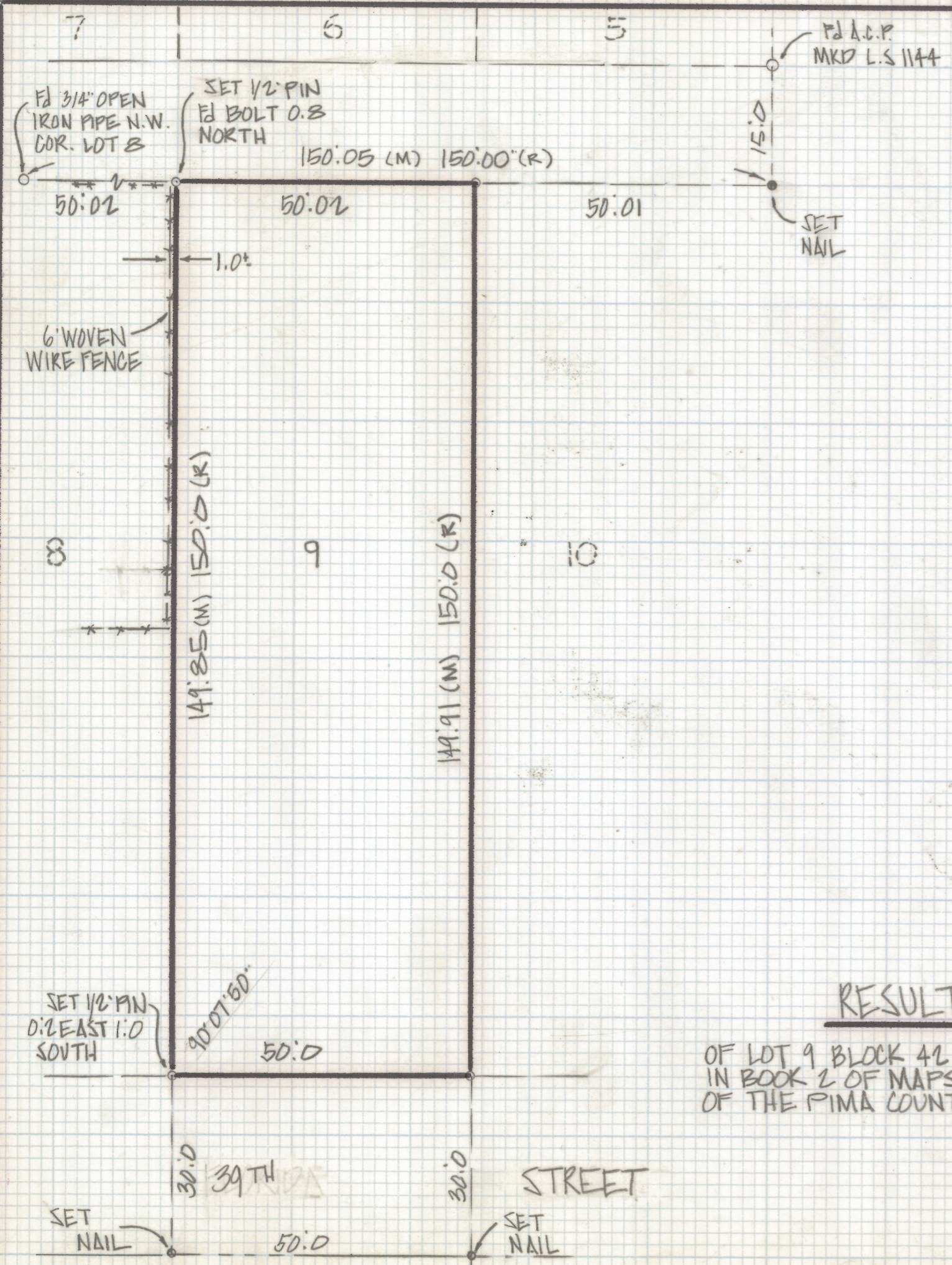


# **DISCLAIMER:**

**This unrecorded Record of Survey was donated to the City of Tucson. The City of Tucson provides this data for your personal use "as is." Additionally, the City of Tucson provides this information with the understanding that it is not guaranteed to be accurate, correct or complete and conclusions drawn from such information are the responsibility of the user.**



NOTES

- (1) - 9 INDICATES SET 1/2" PIN MKD L.S. 4680 UNLESS NOTED
- (2) M - MEASURED
- (3) R - MAP OR DEED RECORD
- (4) CITY OF TUCSON MONUMENT LINE STUDY PER PLAN NO R-69-11
- (5) OCCUPATION INDICATES THAT ALL LOTS IN BLOCK 42 WERE SET RECORD DISTANCE AND THAT APPROXIMATELY 2.7 FEET WAS LEFT AT THE EAST LINE OF BLOCK 42

RESULTS OF SURVEY

OF LOT 9 BLOCK 42 GRAND VIEW ADDITION RECORDED IN BOOK 2 OF MAPS AND PLATS AT PAGE 39 IN THE OFFICE OF THE PIMA COUNTY RECORDER PIMA COUNTY ARIZONA



Z-2018-488  
 ROBERT F. MELLEN  
 REGISTERED LAND SURVEYOR  
 TUCSON, ARIZONA  
 JOB# 84-127