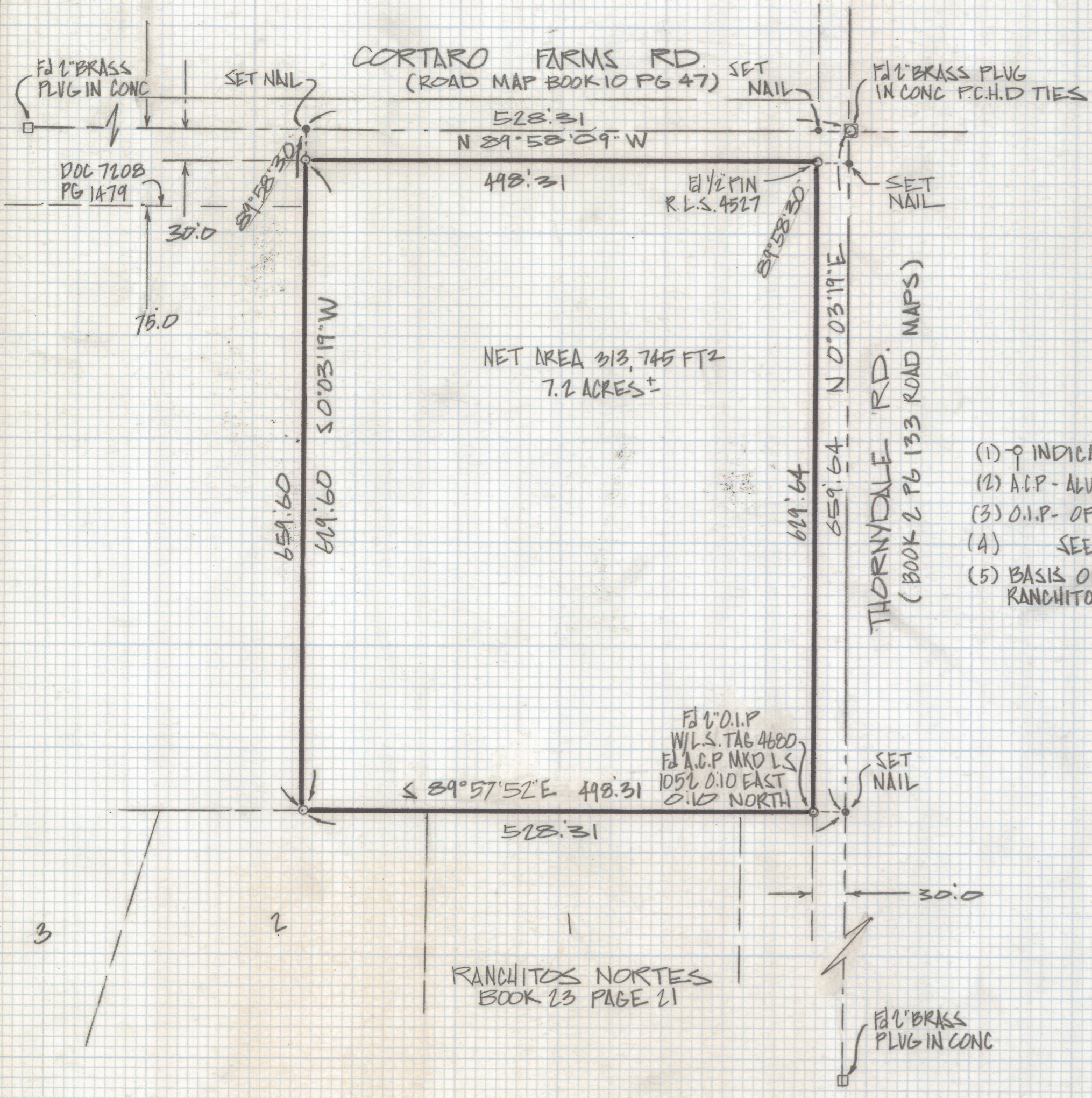
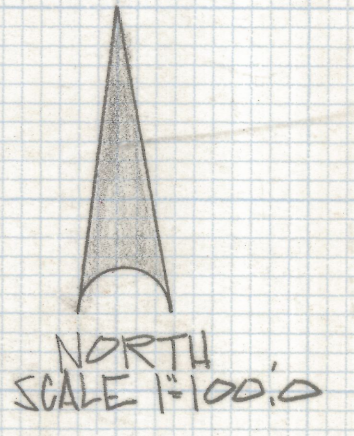


DISCLAIMER:

This unrecorded Record of Survey was donated to the City of Tucson. The City of Tucson provides this data for your personal use "as is." Additionally, the City of Tucson provides this information with the understanding that it is not guaranteed to be accurate, correct or complete and conclusions drawn from such information are the responsibility of the user.



NOTES

- (1) ϕ INDICATES SET 1/2" PIN MKD L.S. 4680 UNLESS NOTED
- (2) A.C.P. - ALUMINUM CAPPED PIN
- (3) O.I.P. - OPEN IRON PIPE
- (4) SEE JOB # 72-49, 88-35
- (5) BASIS OF BEARINGS N 0°03'19"E FOR THORNYDALE ROAD PER RANCHITOS NORTES SUBDIVISION BOOK 23 PG 21

RESULTS OF SURVEY

OF THE EAST 8 ACRES OF THE NORTH HALF OF THE NORTHEAST QUARTER OF THE SOUTHEAST QUARTER SECTION 30 TOWNSHIP 12 SOUTH OF RANGE 12 EAST, GILA AND SALT RIVER BASE AND MERIDIAN PIMA COUNTY, ARIZONA (INCLUDES ALL ROADS)



Z-2018-496
 ROBERT F. MELLEN
 REGISTERED LAND SURVEYOR
 TUCSON, ARIZONA
 JOB # 84-142