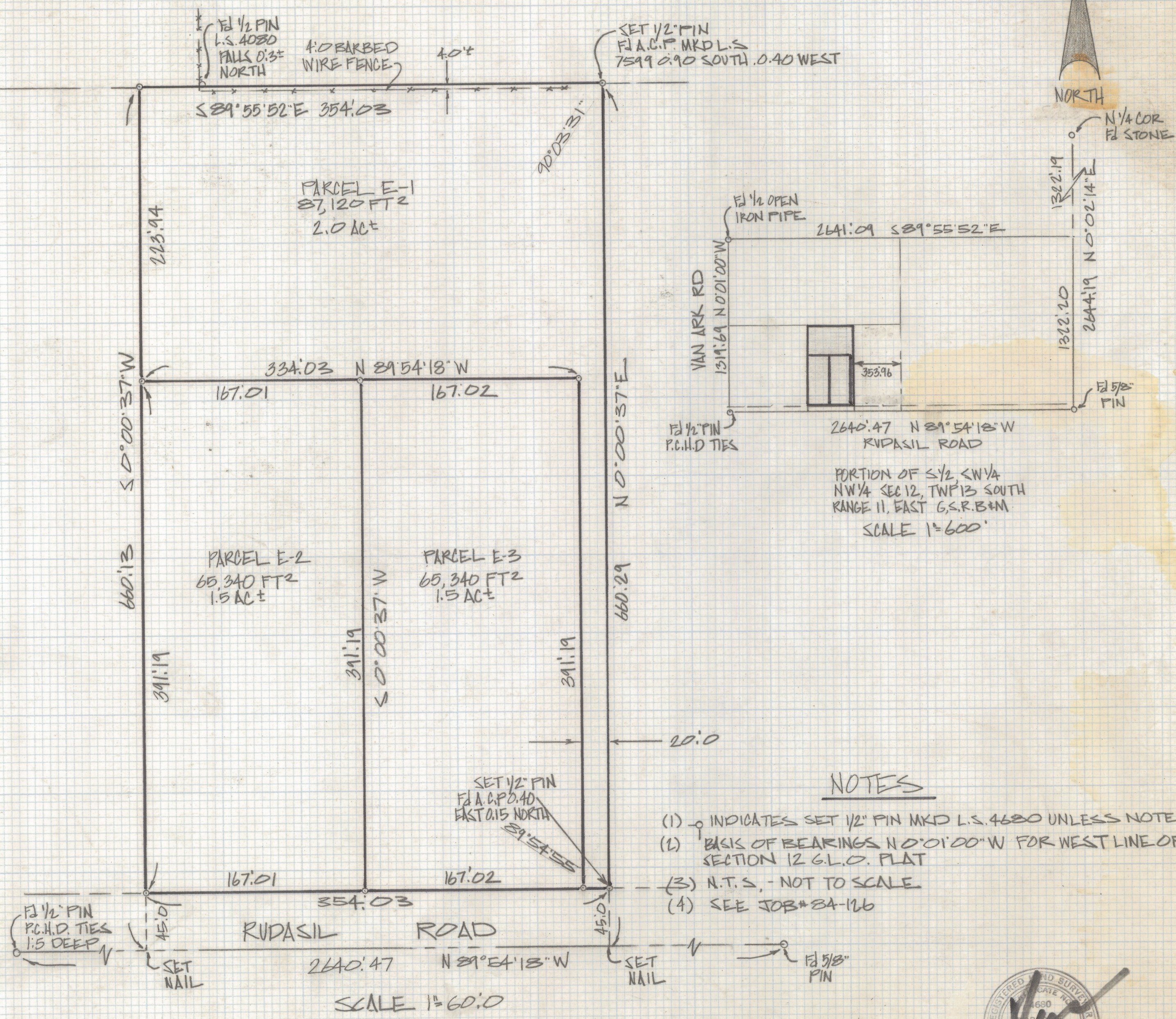


DISCLAIMER:

This unrecorded Record of Survey was donated to the City of Tucson. The City of Tucson provides this data for your personal use "as is." Additionally, the City of Tucson provides this information with the understanding that it is not guaranteed to be accurate, correct or complete and conclusions drawn from such information are the responsibility of the user.



NOTES

- (1) ○ INDICATES SET 1/2" PIN MKD L.S. 4680 UNLESS NOTED
- (2) BASIS OF BEARINGS N 0° 01' 00" W FOR WEST LINE OF SECTION 12 G.L.O. PLAT
- (3) N.T.S. - NOT TO SCALE
- (4) SEE JOB # 84-126

RESULTS OF SURVEY

OF A PORTION OF THE SOUTH HALF OF THE SOUTHWEST QUARTER OF THE NORTH WEST QUARTER OF SECTION 12, TOWNSHIP 13 SOUTH OF RANGE 11 EAST GILA AND SALT RIVER BASE AND MERIDIAN PIMA COUNTY ARIZONA



Z-2018-500
 ROBERT F. MELLEN
 REGISTERED LAND SURVEYOR
 TUCSON, ARIZONA
 JOB # 84-147