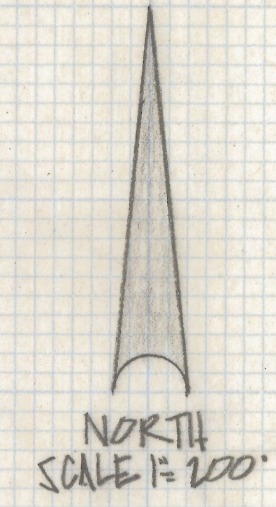
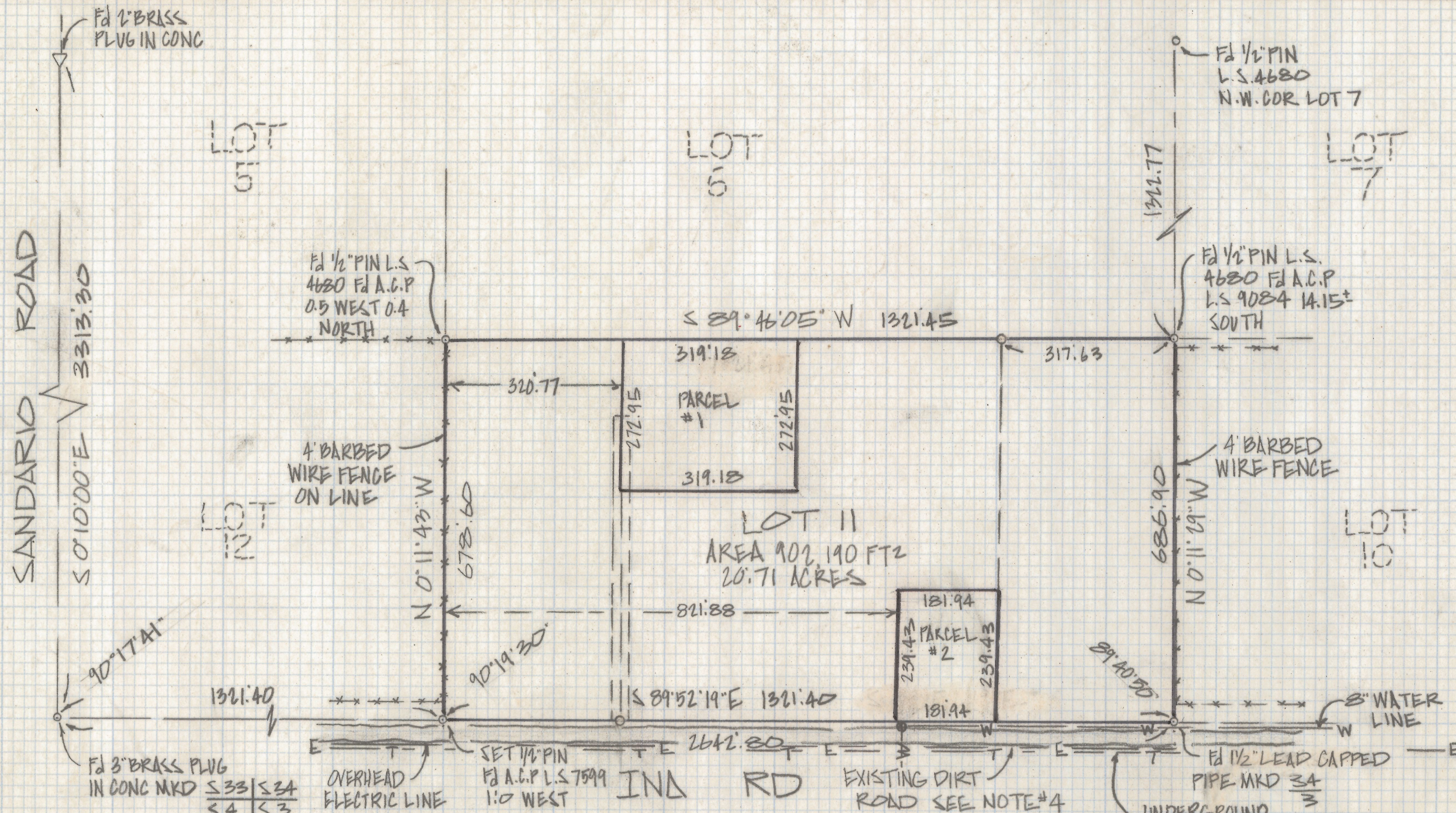


DISCLAIMER:

This unrecorded Record of Survey was donated to the City of Tucson. The City of Tucson provides this data for your personal use "as is." Additionally, the City of Tucson provides this information with the understanding that it is not guaranteed to be accurate, correct or complete and conclusions drawn from such information are the responsibility of the user.



NOTES

- (1) - INDICATES SET 1/2" PIN MKD L.S. 4680 UNLESS NOTED
- (2) SEE JOB# 74-6, 73-38 AND 84-132
- (3) BASIS OF BEARINGS S 0°10'00" E G.L.O. PLAT WEST LINE SEC 34
- (4) WE FIND NO EASEMENTS FOR THIS ROAD

RESULTS OF SURVEY

OF LOT II SECTION THIRTY-FOUR, TOWNSHIP TWELVE SOUTH OF RANGE ELEVEN EAST EAST, GILA AND SALT RIVER BASE AND MERIDIAN PIMA COUNTY ARIZONA



REVISED PARCELS #1 AND 2

Z-2018-503
 ROBERT F. MELLEN
 REGISTERED LAND SURVEYOR
 TUCSON, ARIZONA
 JOB# 84-152