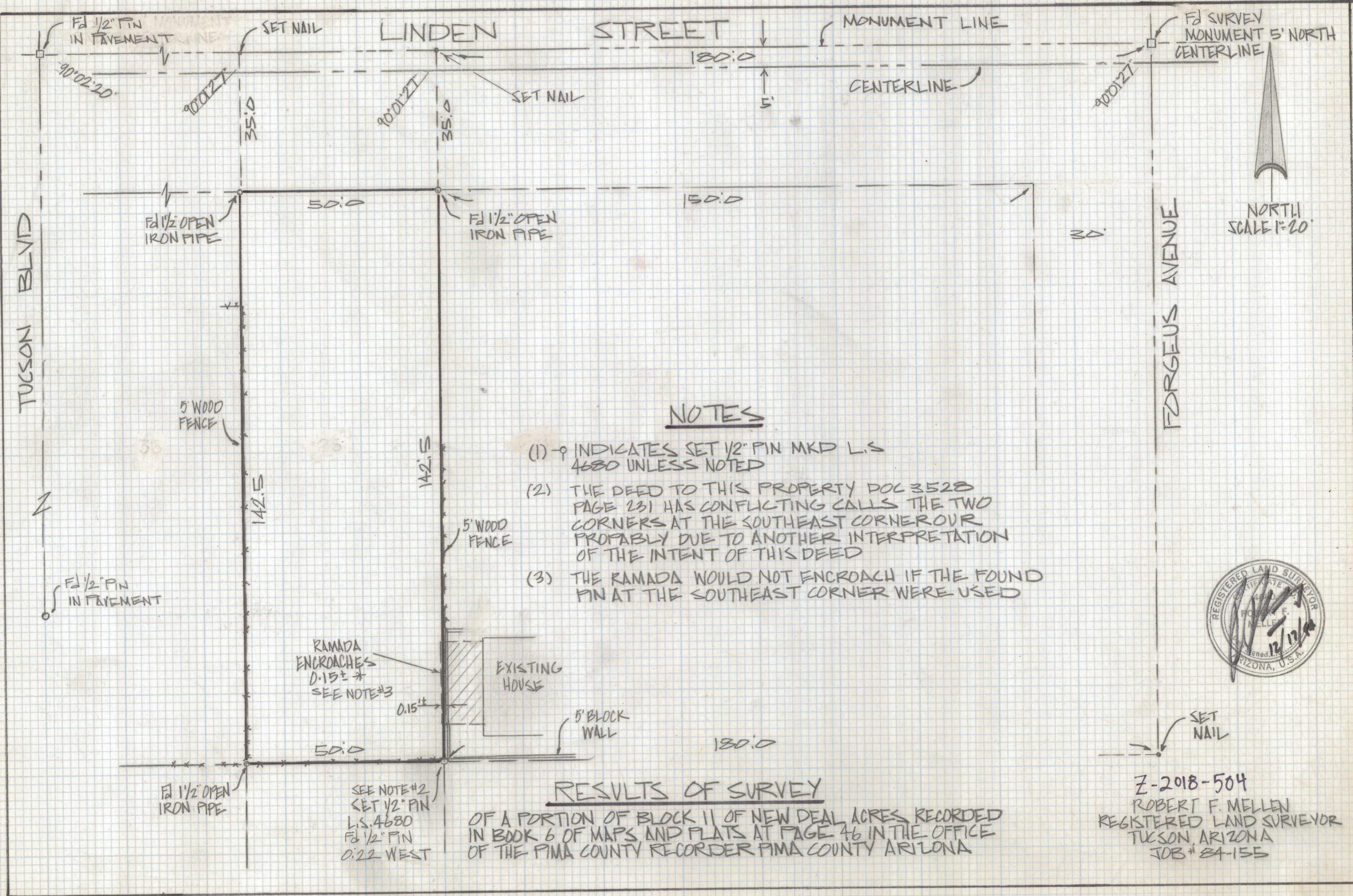


DISCLAIMER:

This unrecorded Record of Survey was donated to the City of Tucson. The City of Tucson provides this data for your personal use "as is." Additionally, the City of Tucson provides this information with the understanding that it is not guaranteed to be accurate, correct or complete and conclusions drawn from such information are the responsibility of the user.



NOTES

- (1) \circ INDICATES SET 1/2" PIN MKD L.S. 4680 UNLESS NOTED
- (2) THE DEED TO THIS PROPERTY DOC 3528 PAGE 231 HAS CONFLICTING CALLS THE TWO CORNERS AT THE SOUTHEAST CORNER OUR PROBABLY DUE TO ANOTHER INTERPRETATION OF THE INTENT OF THIS DEED
- (3) THE RAMADA WOULD NOT ENCRDACH IF THE FOUND PIN AT THE SOUTHEAST CORNER WERE USED

RESULTS OF SURVEY

OF A PORTION OF BLOCK 11 OF NEW DEAL ACRES RECORDED IN BOOK 6 OF MAPS AND PLATS AT PAGE 46 IN THE OFFICE OF THE PIMA COUNTY RECORDER PIMA COUNTY ARIZONA

SEE NOTE #2
 SET 1/2" PIN
 L.S. 4680
 Fd 1/2" PIN
 0:22 WEST

Z-2018-504
 ROBERT F. MELLEN
 REGISTERED LAND SURVEYOR
 TUCSON, ARIZONA
 JOB # 84-155

