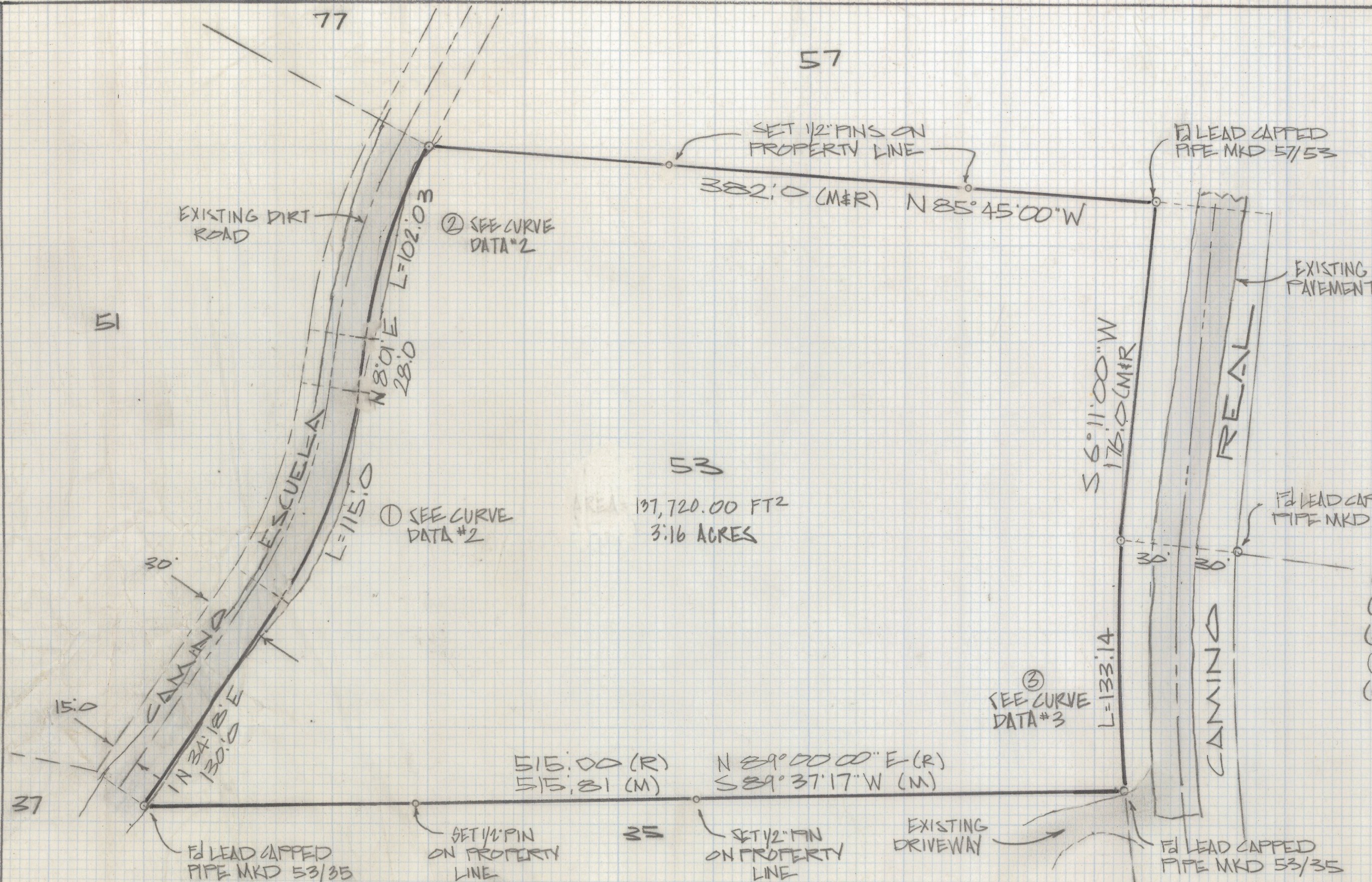
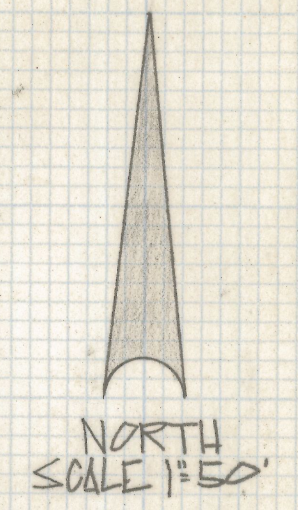


DISCLAIMER:

This unrecorded Record of Survey was donated to the City of Tucson. The City of Tucson provides this data for your personal use "as is." Additionally, the City of Tucson provides this information with the understanding that it is not guaranteed to be accurate, correct or complete and conclusions drawn from such information are the responsibility of the user.



CURVE DATA					
Nº	RADIUS	DELTA	TANGENT	LENGTH	CHORD
1	250.69	26°17'00"	58.53	115.0	113.99
2	356.58	16°23'38"	51.36	102.03	101.68
3	411.94	18°31'04"	67.15	133.14	132.56



NOTES

- (1) ♀ INDICATES SET 1/2" PIN MKD L.S. 4680 UNLESS NOTED
- (2) M - MEASURED
- (3) R - MAP OR DEED RECORD
- (4) † THESE CORNERS WERE NOT SET OR FOUND
- (5) THIS SUBDIVISION HAS MANY ERRORS AND OMISSIONS THEREFORE CAUTION SHOULD BE USED WHEN BUILDING ON OR NEAR PROPERTY LINES

RESULTS OF SURVEY

OF LOT 53 CATALINA FOOTHILLS ESTATES #1 RECORDED IN BOOK 6 OF MAPS AND PLATS AT PAGE 57 IN THE OFFICE OF THE PIMA COUNTY RECORDER PIMA COUNTY ARIZONA



Z-2018-505
 ROBERT F. MELLEN
 REGISTERED LAND SURVEYOR
 TUCSON, ARIZONA
 DB# 84-156