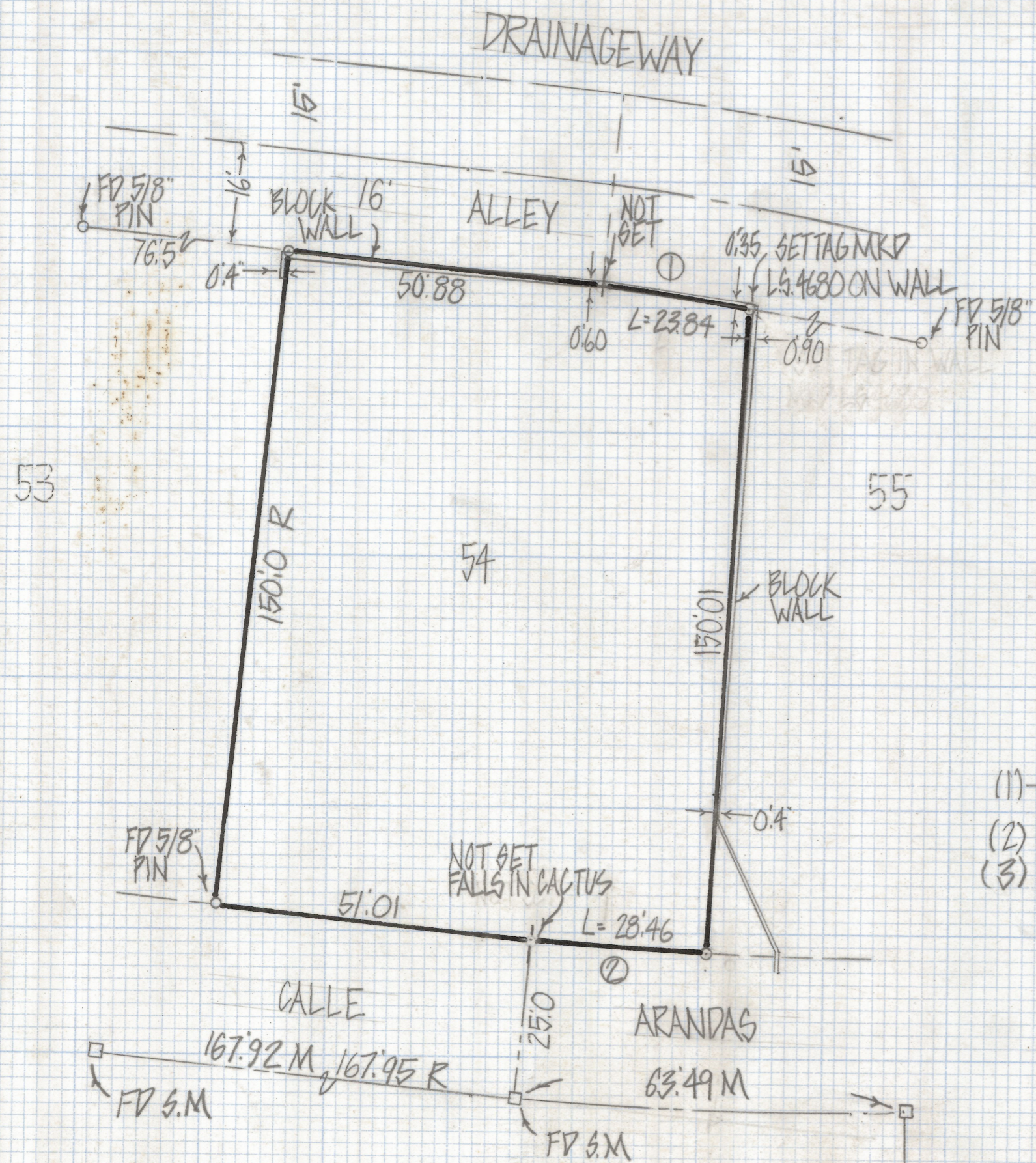
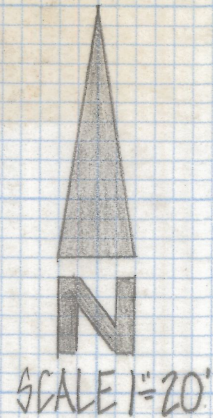


# **DISCLAIMER:**

**This unrecorded Record of Survey was donated to the City of Tucson. The City of Tucson provides this data for your personal use "as is." Additionally, the City of Tucson provides this information with the understanding that it is not guaranteed to be accurate, correct or complete and conclusions drawn from such information are the responsibility of the user.**

CURVE DATA					
N°	RADIUS	DELTA	TANGENT	LENGTH	CHORD
1	542.0	2°31'13"	11.92'	23.84	23.84
2	647.0	2°31'13"	14.23	28.46	28.46



RESULTS OF SURVEY

OF LOT 54 TUCSON PARK WEST RECORDED IN BOOK 17 OF MAPS AND PLATS AT PAGE 39 IN THE OFFICE OF THE PIMA COUNTY RECORDER PIMA COUNTY ARIZONA

NOTES

- (1) - INDICATES 1/2" PIN GET MKD L.G. 4680 UNLESS NOTED
- (2) M - MEASURED
- (3) R - MAP RECORD



Z-2018-510  
 ROBERT F. MELLEN  
 REGISTERED LAND SURVEYOR  
 TUCSON, ARIZONA  
 JOB# 82-11