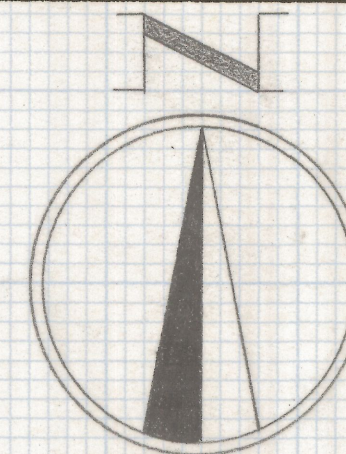


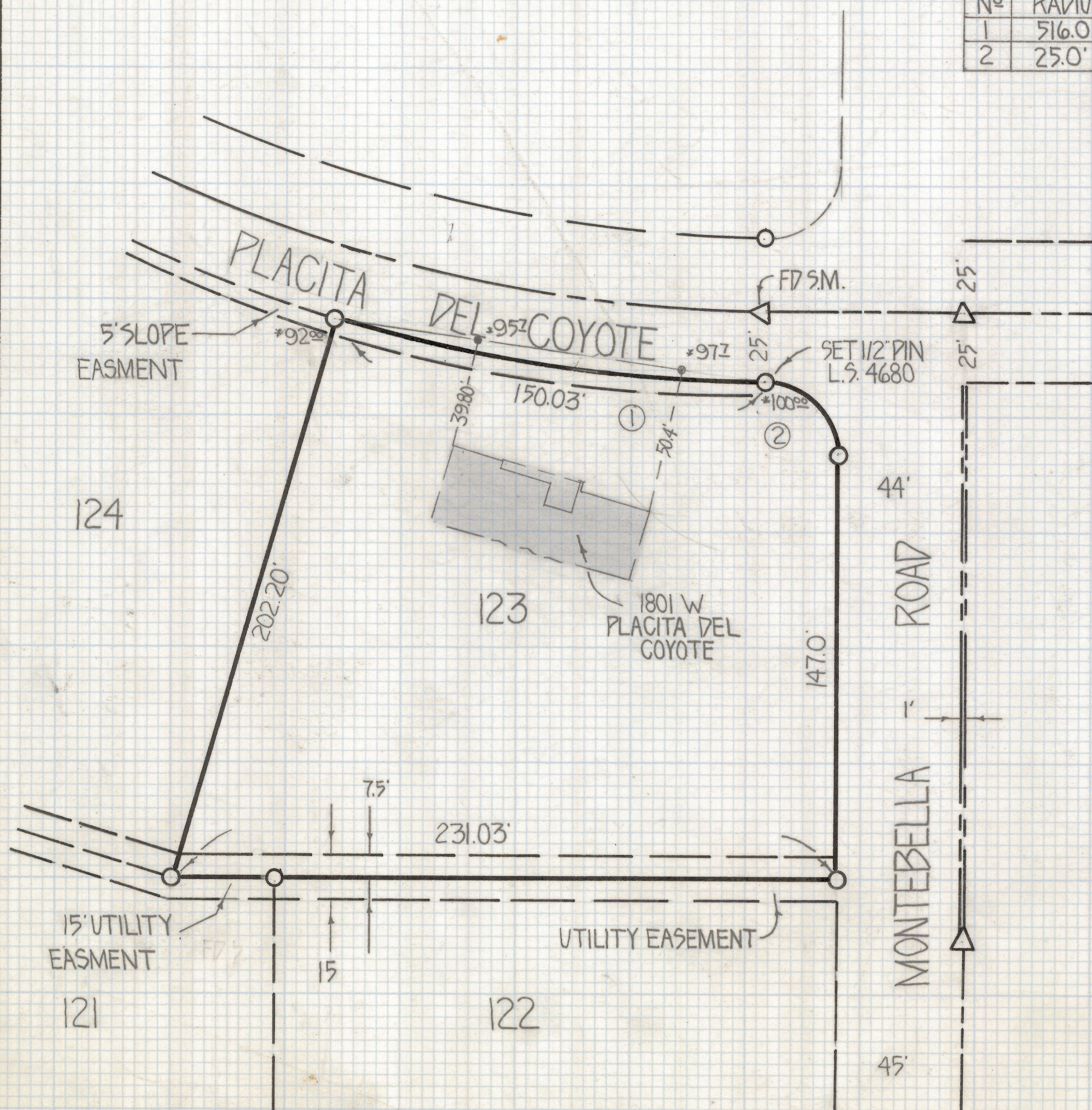
DISCLAIMER:

This unrecorded Record of Survey was donated to the City of Tucson. The City of Tucson provides this data for your personal use "as is." Additionally, the City of Tucson provides this information with the understanding that it is not guaranteed to be accurate, correct or complete and conclusions drawn from such information are the responsibility of the user.

CURVE TABLE				
No	RADIUS	DELTA	TANGENT	LENGTH
1	516.0'	16°43'06"	75.82'	150.56'
2	25.0'	90°00'00"	25.00'	39.27'





SCALE 1"=40'



RESULTS OF SURVEY

OF LOT 123 OF ORACLE FOOTHILLS ESTATES NO. 6
AS RECORDED IN BOOK 16 OF MAPS AND PLATS AT
PAGE 88 RECORDED IN THE OFFICE OF THE PIMA
COUNTY RECORDER PIMA COUNTY ARIZONA

— NOTES —

- (1)  INDICATES FOUND 5/8" PIN MKD RE. 2663 UNLESS NOTED
- (2)  INDICATES CURVE SEE CURVE TABLE
- (3) * INDICATES GROUND ELEVATIONS



Z-2018-517

ROBERT F MELLEN
REGISTERED LAND SURVEYOR
TUCSON, ARIZONA
JOB #80-3