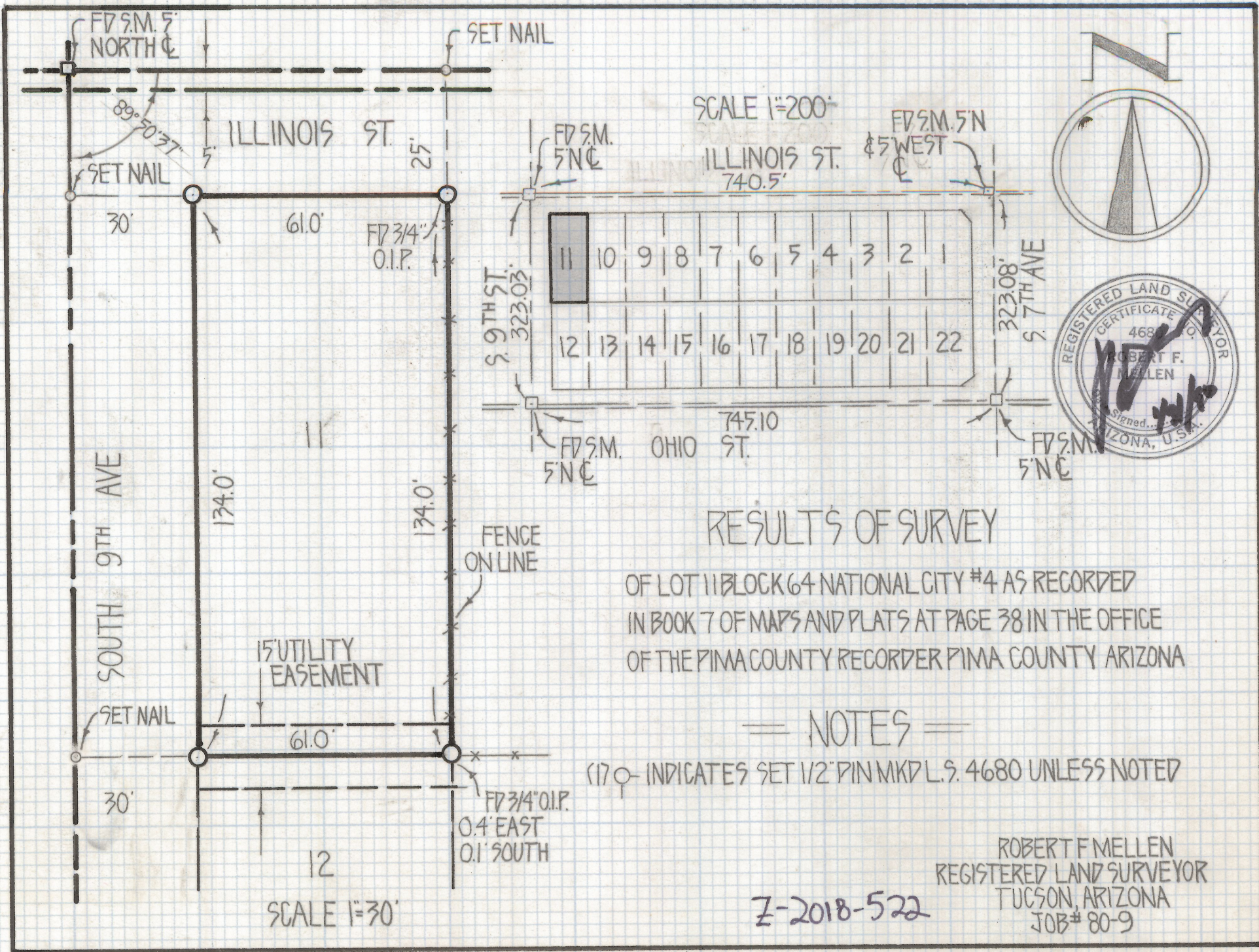


# **DISCLAIMER:**

**This unrecorded Record of Survey was donated to the City of Tucson. The City of Tucson provides this data for your personal use "as is." Additionally, the City of Tucson provides this information with the understanding that it is not guaranteed to be accurate, correct or complete and conclusions drawn from such information are the responsibility of the user.**



SCALE 1"=200'

ILLINOIS ST. 740.5'

11	10	9	8	7	6	5	4	3	2	1
12	13	14	15	16	17	18	19	20	21	22

### RESULTS OF SURVEY

OF LOT 11 BLOCK 64 NATIONAL CITY #4 AS RECORDED  
 IN BOOK 7 OF MAPS AND PLATS AT PAGE 38 IN THE OFFICE  
 OF THE PIMA COUNTY RECORDER PIMA COUNTY ARIZONA

### NOTES

(17) ♀ INDICATES SET 1/2" PIN MKD L.S. 4680 UNLESS NOTED

ROBERT F. MELLEN  
 REGISTERED LAND SURVEYOR  
 TUCSON, ARIZONA  
 JOB# 80-9

Z-2018-522

SCALE 1"=30'