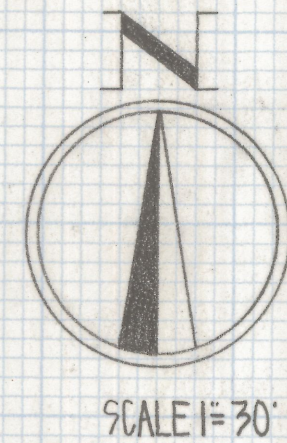
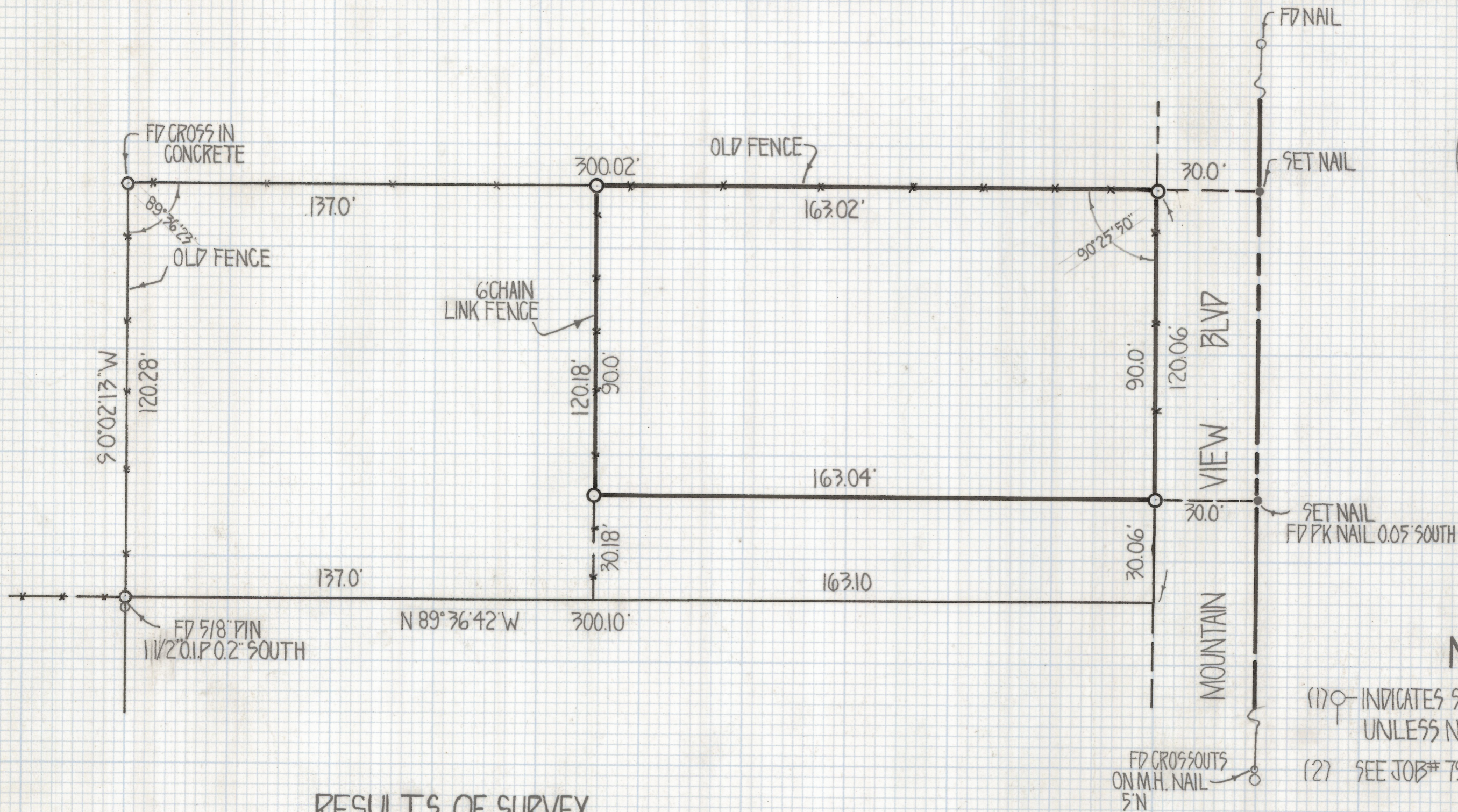


DISCLAIMER:

This unrecorded Record of Survey was donated to the City of Tucson. The City of Tucson provides this data for your personal use "as is." Additionally, the City of Tucson provides this information with the understanding that it is not guaranteed to be accurate, correct or complete and conclusions drawn from such information are the responsibility of the user.



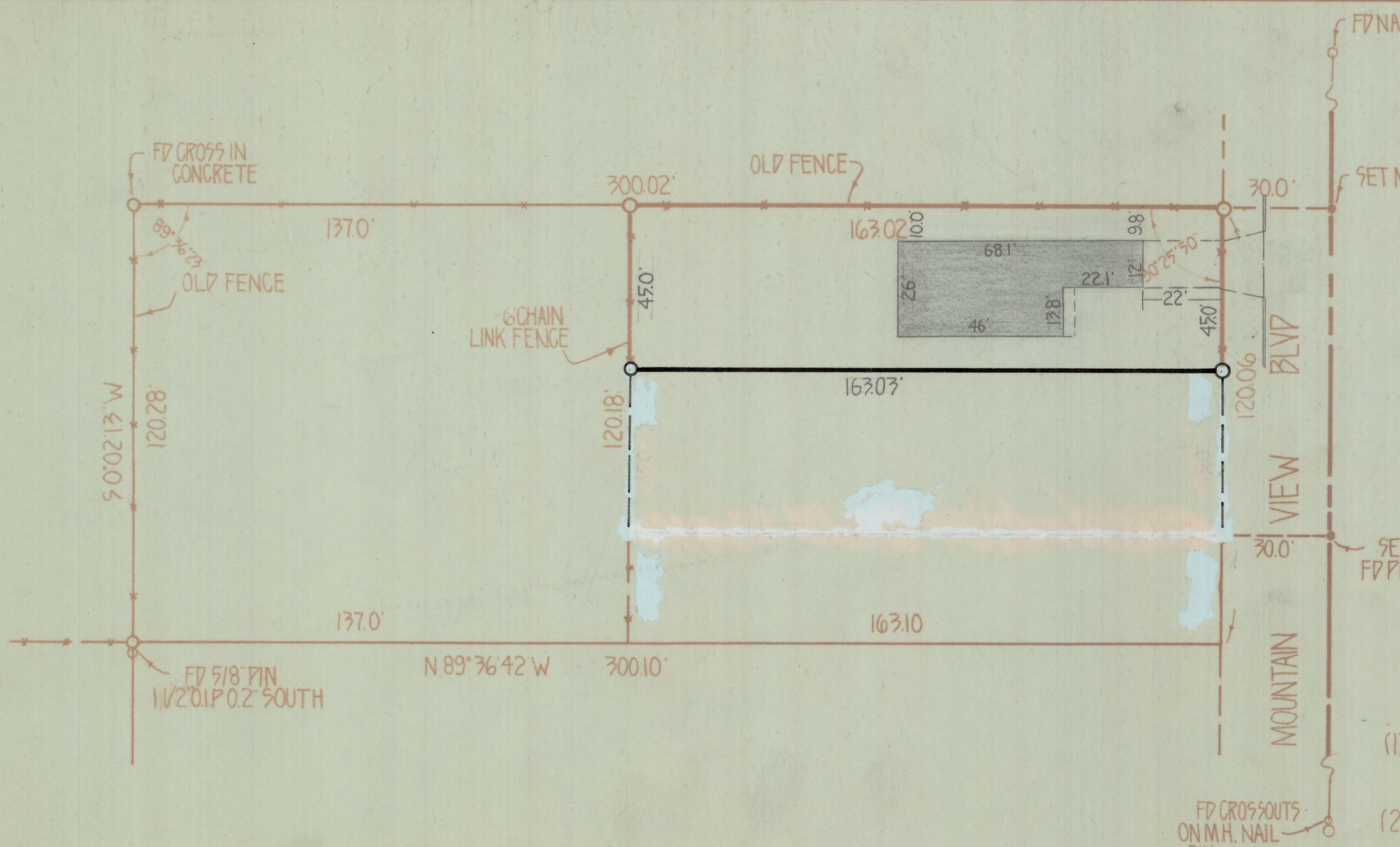
NOTES

- (1) \circ INDICATES SET 1/2" PIN MKD L.S. 4680 UNLESS NOTED
- (2) SEE JOB# 79-107

RESULTS OF SURVEY

OF LOT 9 BLOCK 13 SPEEDWAY ADDITION #2 AS RECORDED
 IN BOOK 3 OF MAPS AND PLATS AT PAGE 98 IN THE OFFICE
 OF THE PIMA COUNTY RECORDER PIMA COUNTY ARIZONA

Z-2018-524 1/2
 ROBERT F MELLEN
 REGISTERED LAND SURVEYOR
 TUCSON, ARIZONA
 JOB# 80-12



SCALE 1" = 30'



NOTES

- (1) INDICATES SET 1/2" PIN MKD L.S. 4680 UNLESS NOTED
- (2) SEE JOB# 79-107

RESULTS OF SURVEY

OF LOT 9 BLOCK 13 SPEEDWAY ADDITION #2 AS RECORDED IN BOOK 3 OF MAPS AND PLATS AT PAGE 98 IN THE OFFICE OF THE PIMA COUNTY RECORDER PIMA COUNTY ARIZONA

Z-2018-524 2/2
 ROBERT F MELLEN
 REGISTERED LAND SURVEYOR
 TUCSON, ARIZONA
 JOB# 80-12

FOUNDATION AND FRAMING COMPLETED 3/13/80