

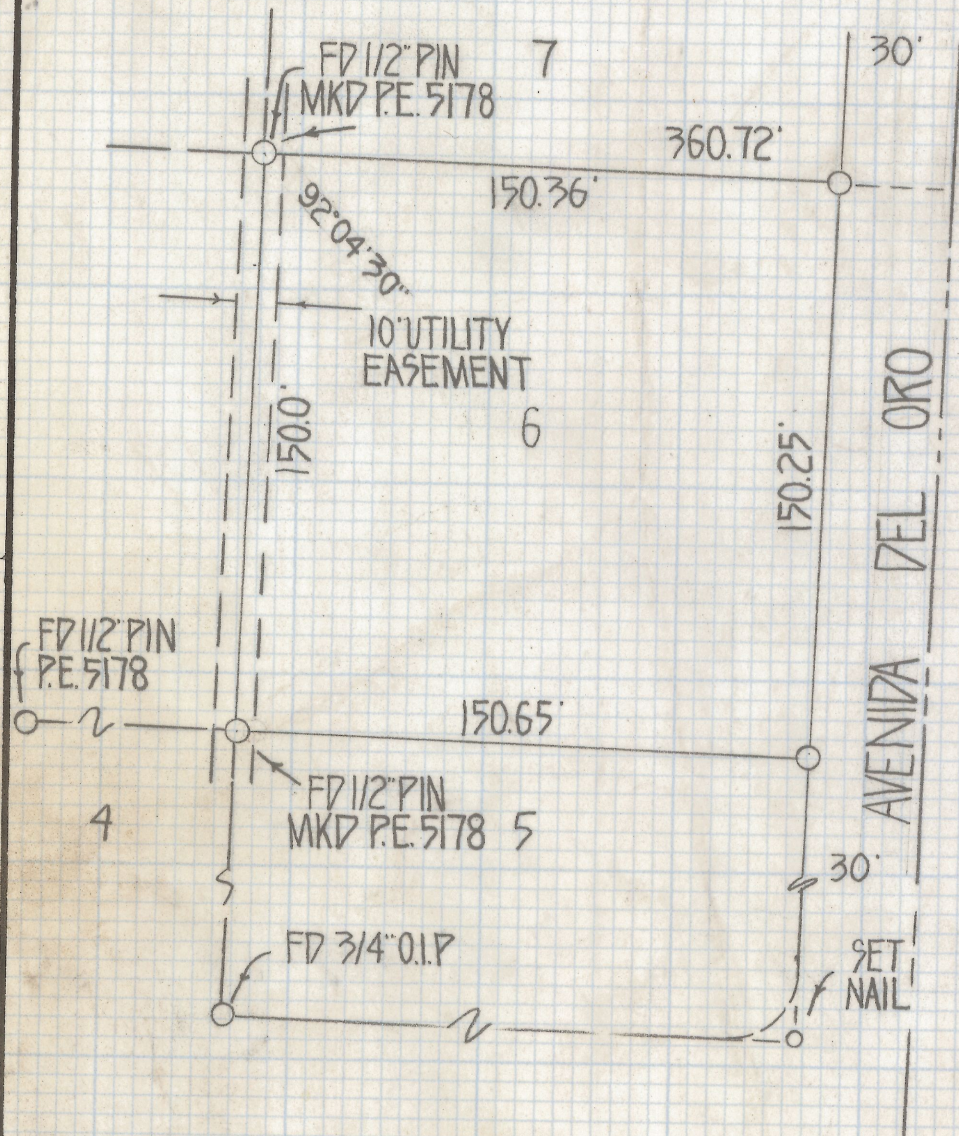
# **DISCLAIMER:**

**This unrecorded Record of Survey was donated to the City of Tucson. The City of Tucson provides this data for your personal use "as is." Additionally, the City of Tucson provides this information with the understanding that it is not guaranteed to be accurate, correct or complete and conclusions drawn from such information are the responsibility of the user.**





SCALE 1"=50'



RESULTS OF SURVEY  
OF LOT 6 BLOCK B OF VISTA LAS CATALINAS  
RECORDED IN BOOK 9 OF MAPS AND PLATS  
AT PAGE 72 RECORDED IN THE OFFICE OF THE  
PIMA COUNTY RECORDER PIMA COUNTY  
ARIZONA

### NOTES

(1) ○ INDICATES SET 1/2" STEEL PIN L.S. 4680  
UNLESS NOTED

Z-2018-538

ROBERT F. MELLEN  
REGISTERED LAND SURVEYOR  
TUCSON, ARIZONA  
JOB # 80-31