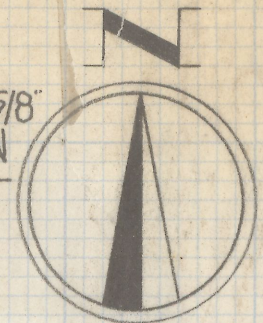
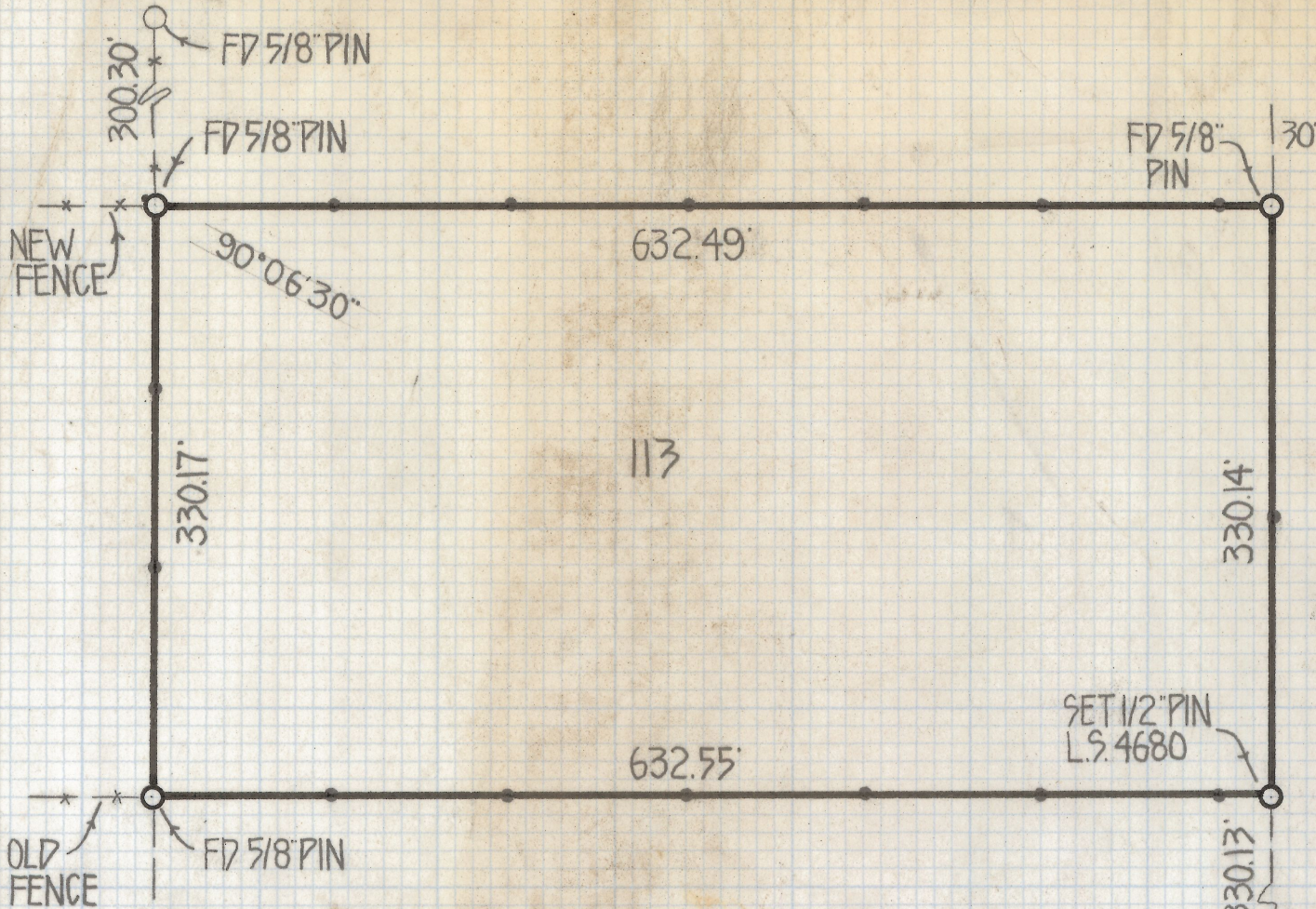


DISCLAIMER:

This unrecorded Record of Survey was donated to the City of Tucson. The City of Tucson provides this data for your personal use "as is." Additionally, the City of Tucson provides this information with the understanding that it is not guaranteed to be accurate, correct or complete and conclusions drawn from such information are the responsibility of the user.



SCALE 1"=100'

DONALD AVENUE

NOTES

(1) - INDICATES SET NAILS ON LINE

RESULTS OF SURVEY

OF LOT 113 OF MILLSTONE MANOR RECORDED
 IN BOOK 10 OF MAPS AND PLATS AT PAGE 57
 IN THE OFFICE OF THE PIMA COUNTY RECORDER
 PIMA COUNTY ARIZONA

Z-2018-539

ROBERT F MELLEN
 REGISTERED LAND SURVEYOR
 TUCSON, ARIZONA
 JOB #80-32

