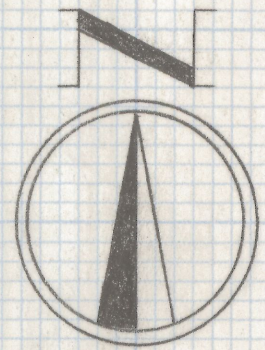
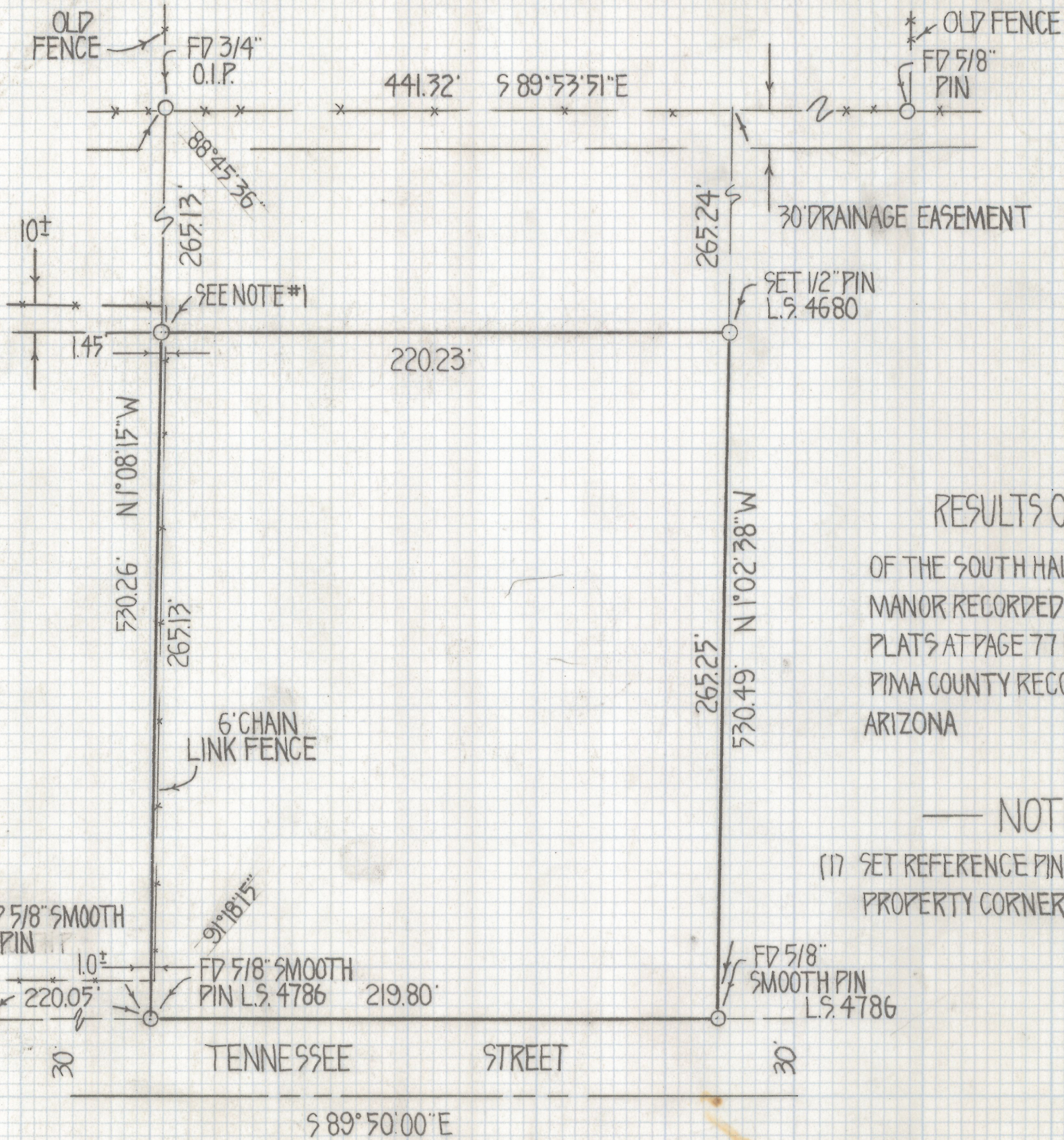


DISCLAIMER:

This unrecorded Record of Survey was donated to the City of Tucson. The City of Tucson provides this data for your personal use "as is." Additionally, the City of Tucson provides this information with the understanding that it is not guaranteed to be accurate, correct or complete and conclusions drawn from such information are the responsibility of the user.



SCALE 1"=50'

RESULTS OF SURVEY

OF THE SOUTH HALF OF LOT 21 OF ALVERNON MANOR RECORDED IN BOOK 8 OF MAPS AND PLATS AT PAGE 77 IN THE OFFICE OF THE PIMA COUNTY RECORDER PIMA COUNTY ARIZONA

— NOTES —

(1) SET REFERENCE PIN 2.0 FEET EAST OF PROPERTY CORNER



Z-2018-542

ROBERT F. MELLEN
REGISTERED LAND SURVEYOR
TUCSON, ARIZONA
JOB # 80-35