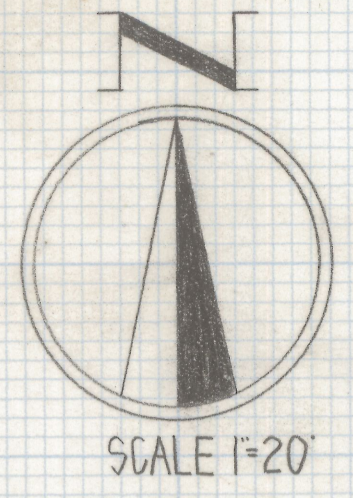
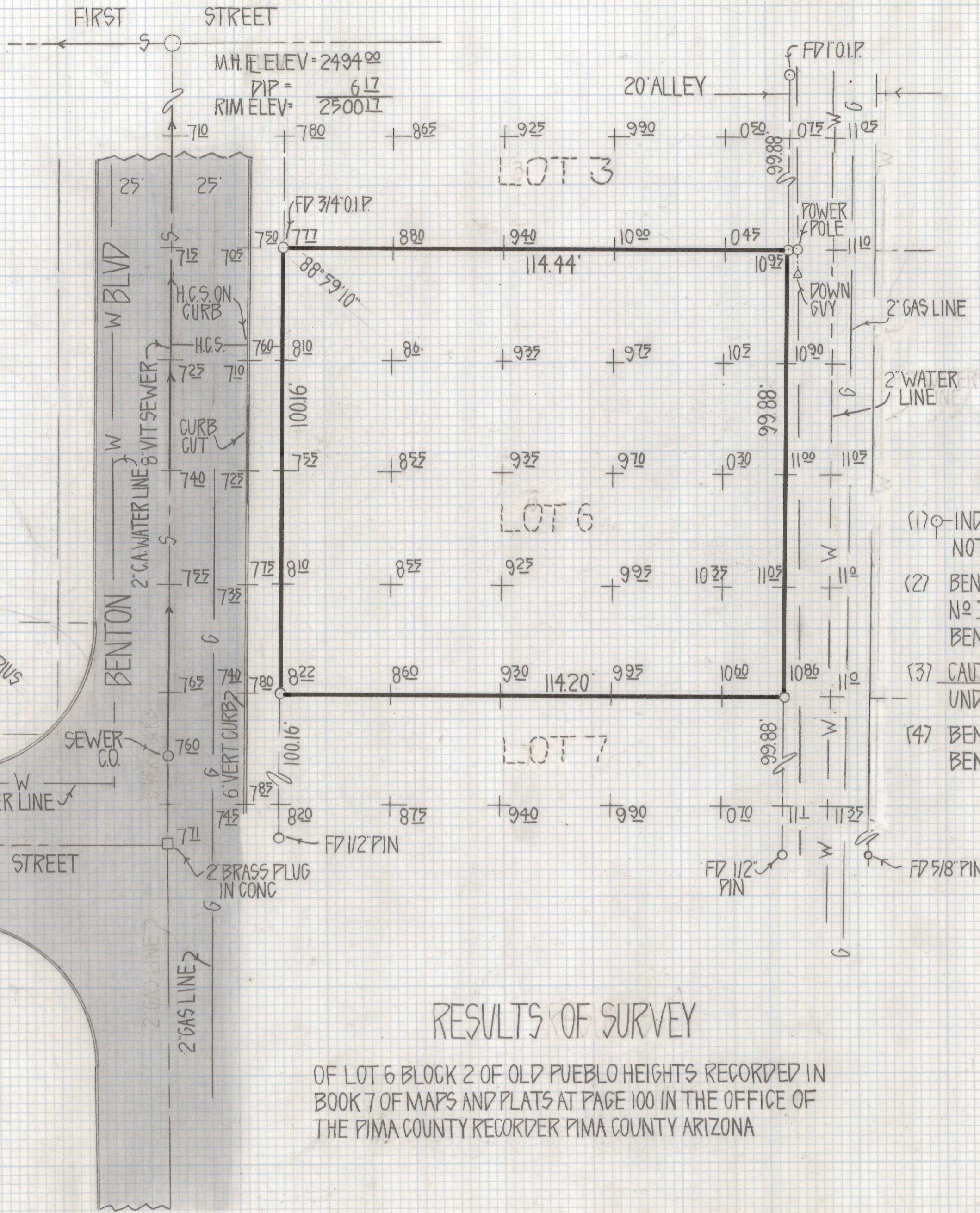


DISCLAIMER:

This unrecorded Record of Survey was donated to the City of Tucson. The City of Tucson provides this data for your personal use "as is." Additionally, the City of Tucson provides this information with the understanding that it is not guaranteed to be accurate, correct or complete and conclusions drawn from such information are the responsibility of the user.



NOTES

- (1) (1) INDICATES SET 1/2" PIN MKD L.S. 4680 UNLESS NOTED
- (2) BENCH MARK DATUM CITY OF TUCSON PLAN NO I-63-23 FLOW LINE OF SEWER 1ST & BENTON BLVD ELEV 2494.00
- (3) CAUTION CALL BLUE STAKE TO VERIFY UNDERGROUND UTILITIES 792-2211
- (4) BENCH MARK 2" BRASS PLUG 2ND ST. & BENTON BLVD ELEV 2507.11

RESULTS OF SURVEY

OF LOT 6 BLOCK 2 OF OLD PUEBLO HEIGHTS RECORDED IN BOOK 7 OF MAPS AND PLATS AT PAGE 100 IN THE OFFICE OF THE PIMA COUNTY RECORDER PIMA COUNTY ARIZONA



Z-2018-556
ROBERT F. MELLEN
REGISTERED LAND SURVEYOR
TUCSON, ARIZONA

REVISED 6/2/80 WATER & GAS LINES JOB # 80-56

(SEE A)