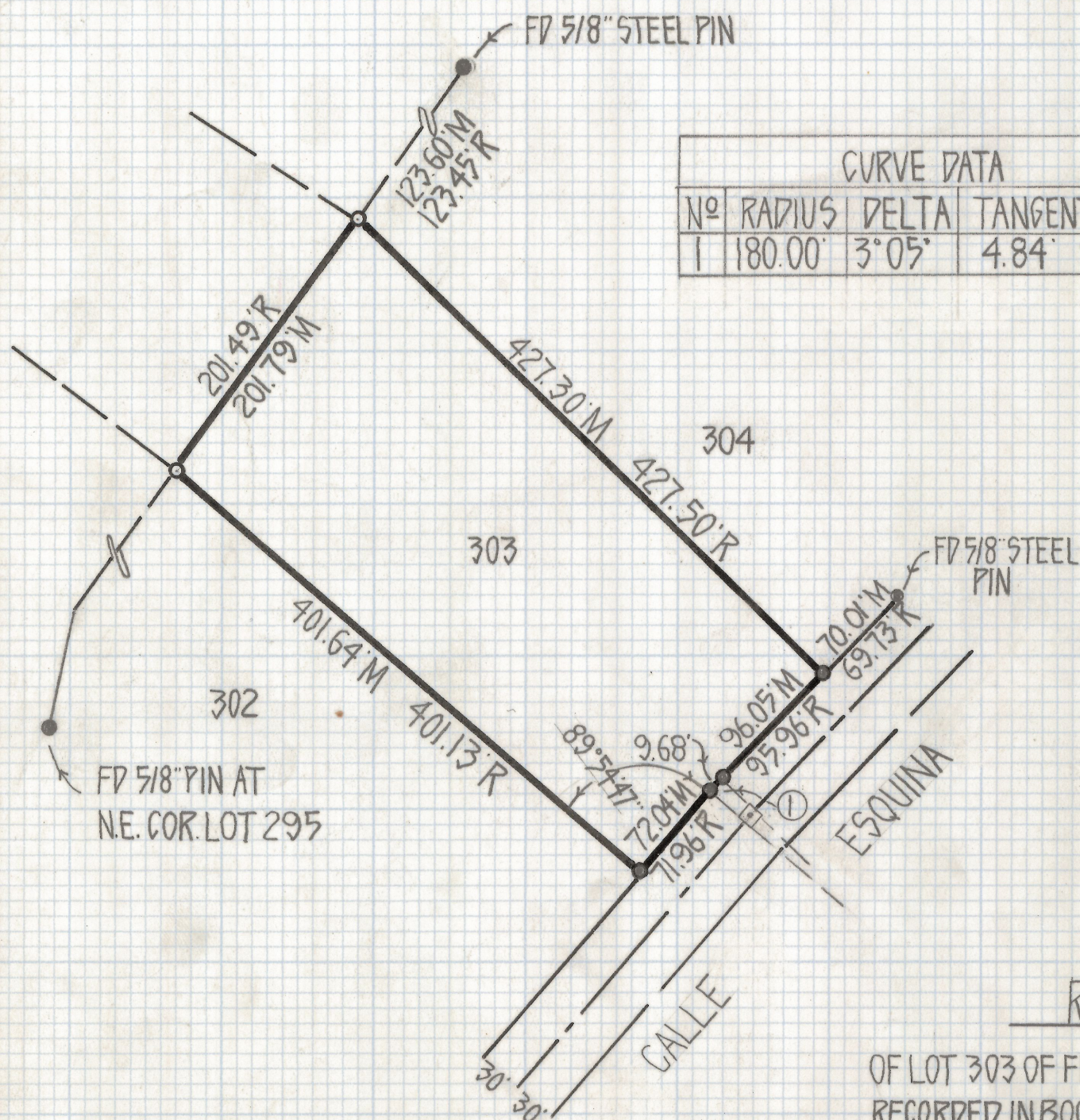
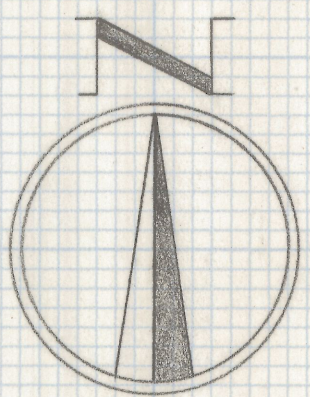


# **DISCLAIMER:**

**This unrecorded Record of Survey was donated to the City of Tucson. The City of Tucson provides this data for your personal use "as is." Additionally, the City of Tucson provides this information with the understanding that it is not guaranteed to be accurate, correct or complete and conclusions drawn from such information are the responsibility of the user.**



CURVE DATA				
No	RADIUS	DELTA	TANGENT	LENGTH
1	180.00'	3°05'	4.84'	9.68'



SCALE 1"=100'



RESULTS OF SURVEY

OF LOT 303 OF FLECHA CAIDA RANCH ESTATES #6 AS RECORDED IN BOOK 13 OF MAPS AND PLATS AT PAGE 82 IN THE OFFICE OF THE PIMA COUNTY RECORDER PIMA COUNTY ARIZONA

NOTES

- (1) ♀ - INDICATES SET 1/2" PIN MKD L.S. 4680 UNLESS NOTED
- (2) ⊕ - INDICATES 2" BRASS PLUG MKD P.E. 2368
- (3) R - MAP RECORD
- (4) M - MEASURED
- (5) ● - INDICATES 5/8" STEEL PIN FOUND

Z-2018-561  
 ROBERT F MELLEN  
 REGISTERED LAND SURVEYOR  
 TUCSON, ARIZONA  
 JOB # 80-64