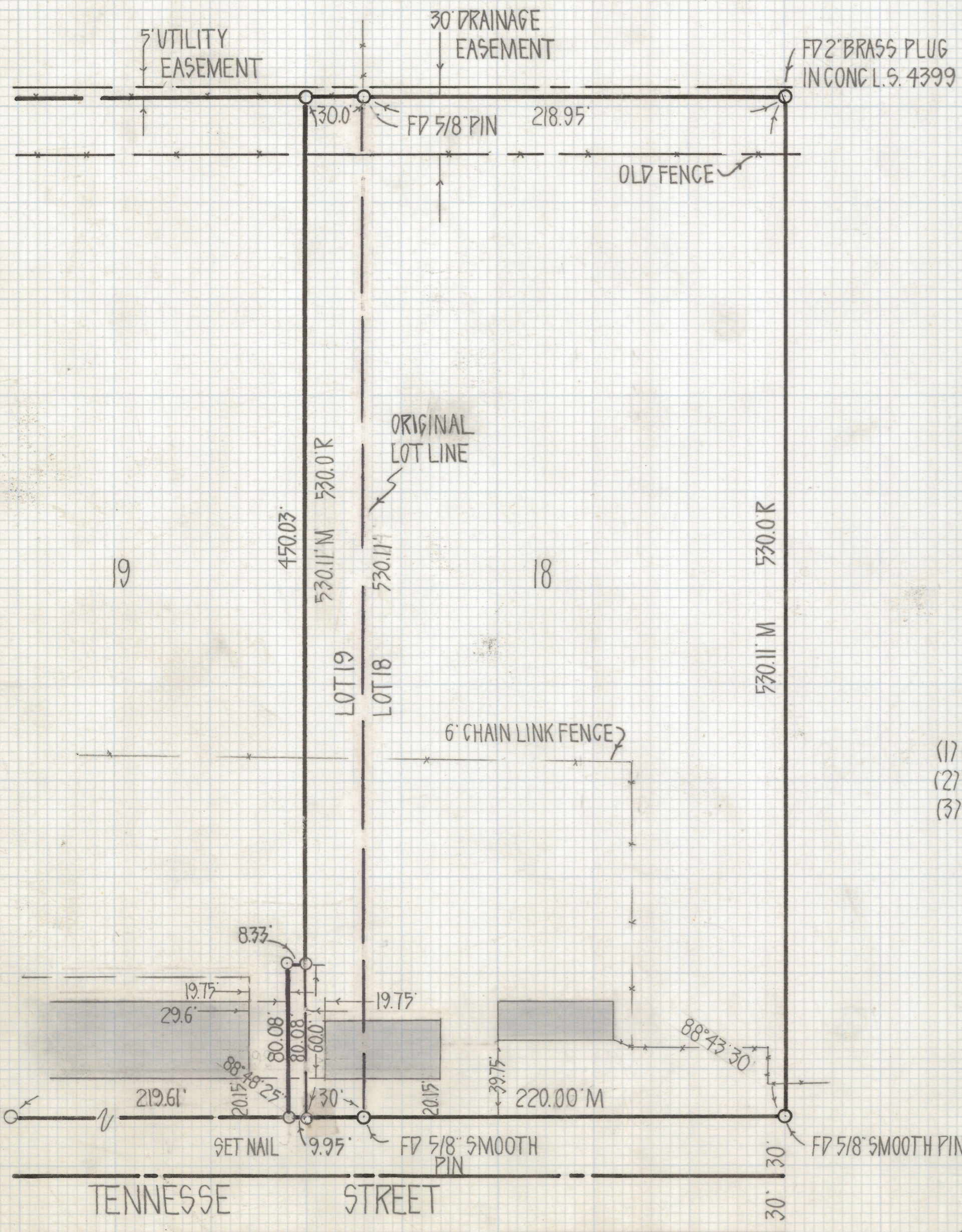
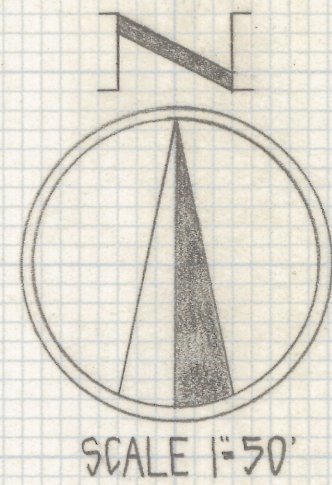


# **DISCLAIMER:**

**This unrecorded Record of Survey was donated to the City of Tucson. The City of Tucson provides this data for your personal use "as is." Additionally, the City of Tucson provides this information with the understanding that it is not guaranteed to be accurate, correct or complete and conclusions drawn from such information are the responsibility of the user.**



RESULTS OF SURVEY

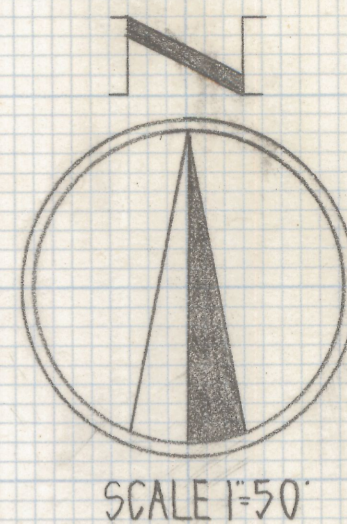
OF LOT 18 AND THE EAST 30 FEET OF LOT 19 BLOCK "B"  
 OF ALVERNON MANOR RECORDED IN BOOK 8 OF MAPS  
 AND PLATS AT PAGE 77 IN THE OFFICE OF THE PIMA  
 COUNTY RECORDER PIMA COUNTY ARIZONA

NOTES

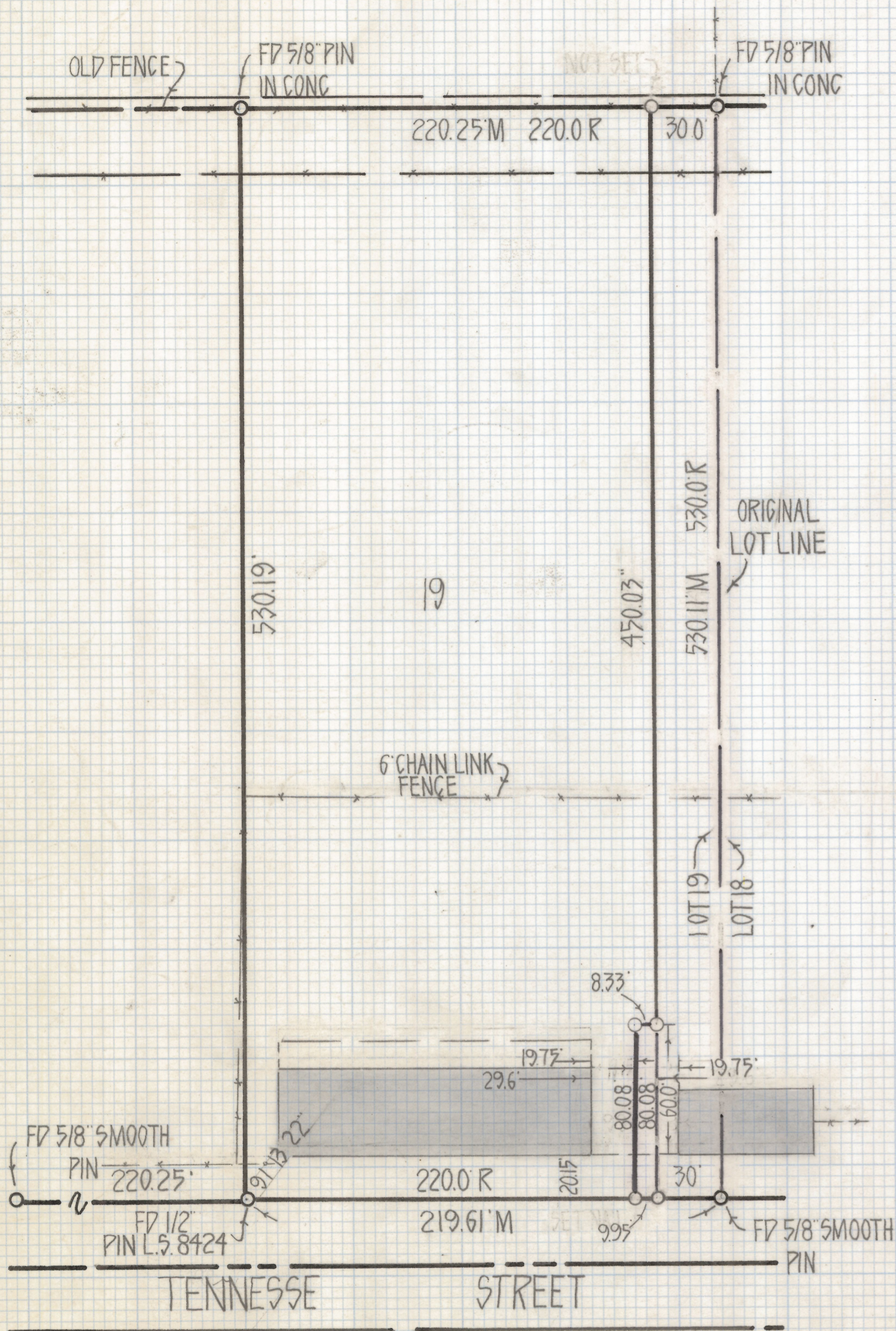
- (1)  $\circ$  INDICATES SET 1/2" PIN MKD L.S. 4680 UNLESS NOTED
- (2) M - MEASURED
- (3) R - MAP RECORD



Z-2018-564 1/3  
 ROBERT F. MELLEN  
 REGISTERED LAND SURVEYOR  
 TUCSON, ARIZONA  
 JOB # 80-69 A  
 REVISED LOT LINE 7/2/80



SCALE 1"=50'



RESULTS OF SURVEY

OF LOT 19 EXCEPT THE EAST 30 FEET BLOCK B OF ALVERNON MANOR RECORDED IN BOOK 8 OF MAPS AND PLATS AT PAGE 77 IN THE OFFICE OF THE PIMA COUNTY RECORDER PIMA COUNTY ARIZONA

NOTES

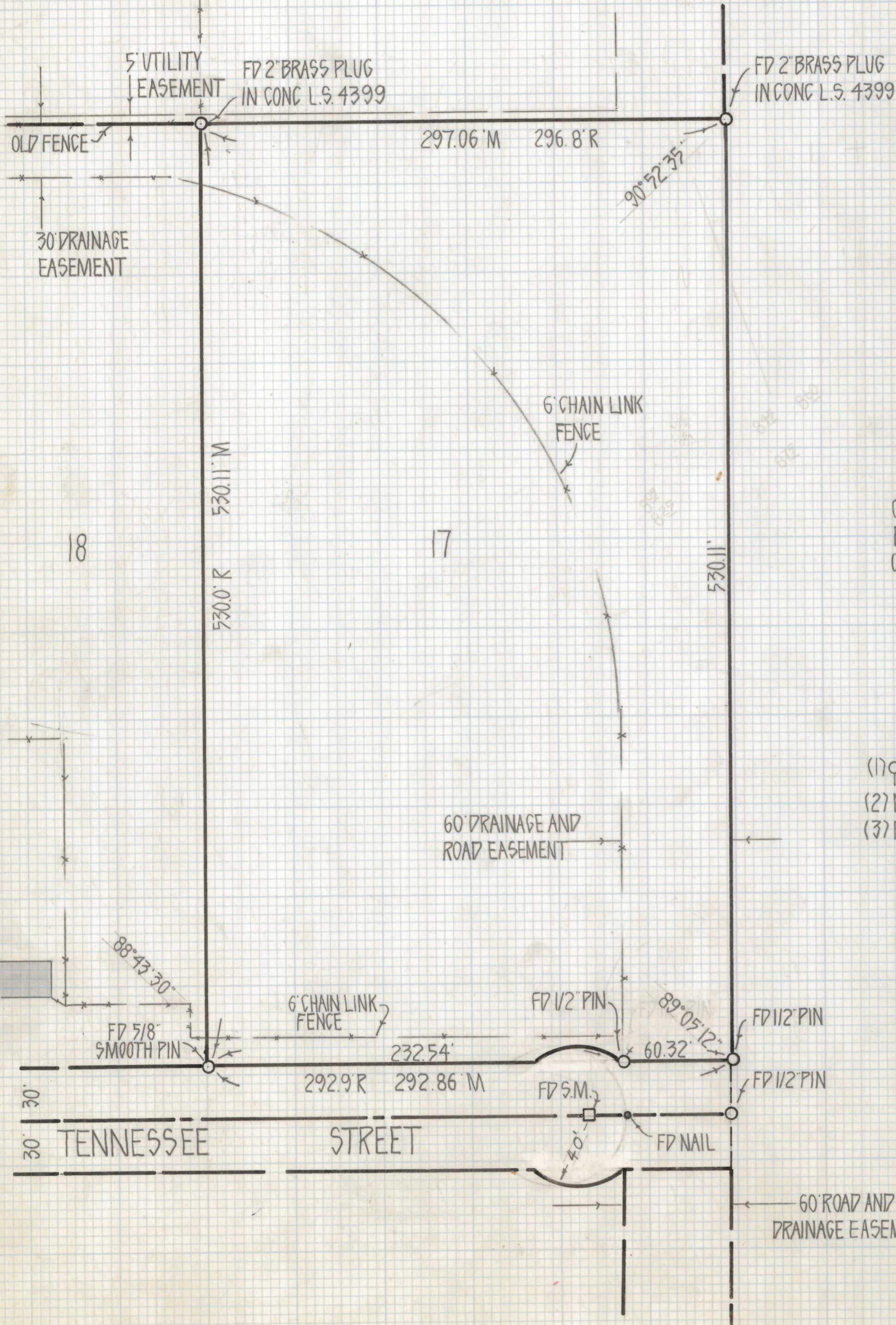
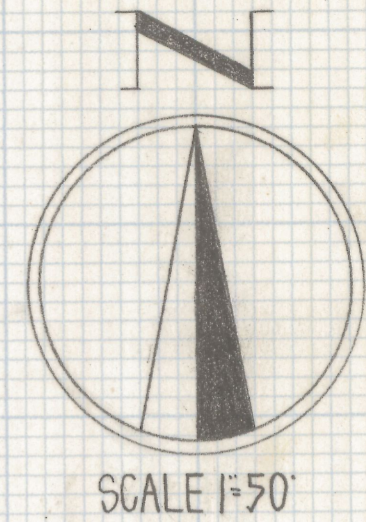
- (1) ○ INDICATES SET 1/2" PIN MKD L.S. 4680 UNLESS NOTED
- (2) M - MEASURED
- (3) R - MAP RECORD



Z-2018-564 2/3

ROBERT F. MELLEN  
 REGISTERED LAND SURVEYOR  
 TUCSON, ARIZONA  
 JOB# 80-69 B

REVISED LOT LINE 7/2/80



RESULTS OF SURVEY

OF LOT 17 BLOCK B OF ALVERNON MANOR RECORDED IN BOOK 8 OF MAPS AND PLATS AT PAGE 77 IN THE OFFICE OF THE PIMA COUNTY RECORDER PIMA COUNTY ARIZONA

NOTES

- (1) ○ INDICATES SET 1/2" PIN MKD L.S. 4680 UNLESS NOTED
- (2) M-MEASURED
- (3) R-MAP RECORD



Z-2018-564 3/3  
 ROBERT F. MELLEN  
 REGISTERED LAND SURVEYOR  
 TUCSON, ARIZONA  
 JOB #80-69 C