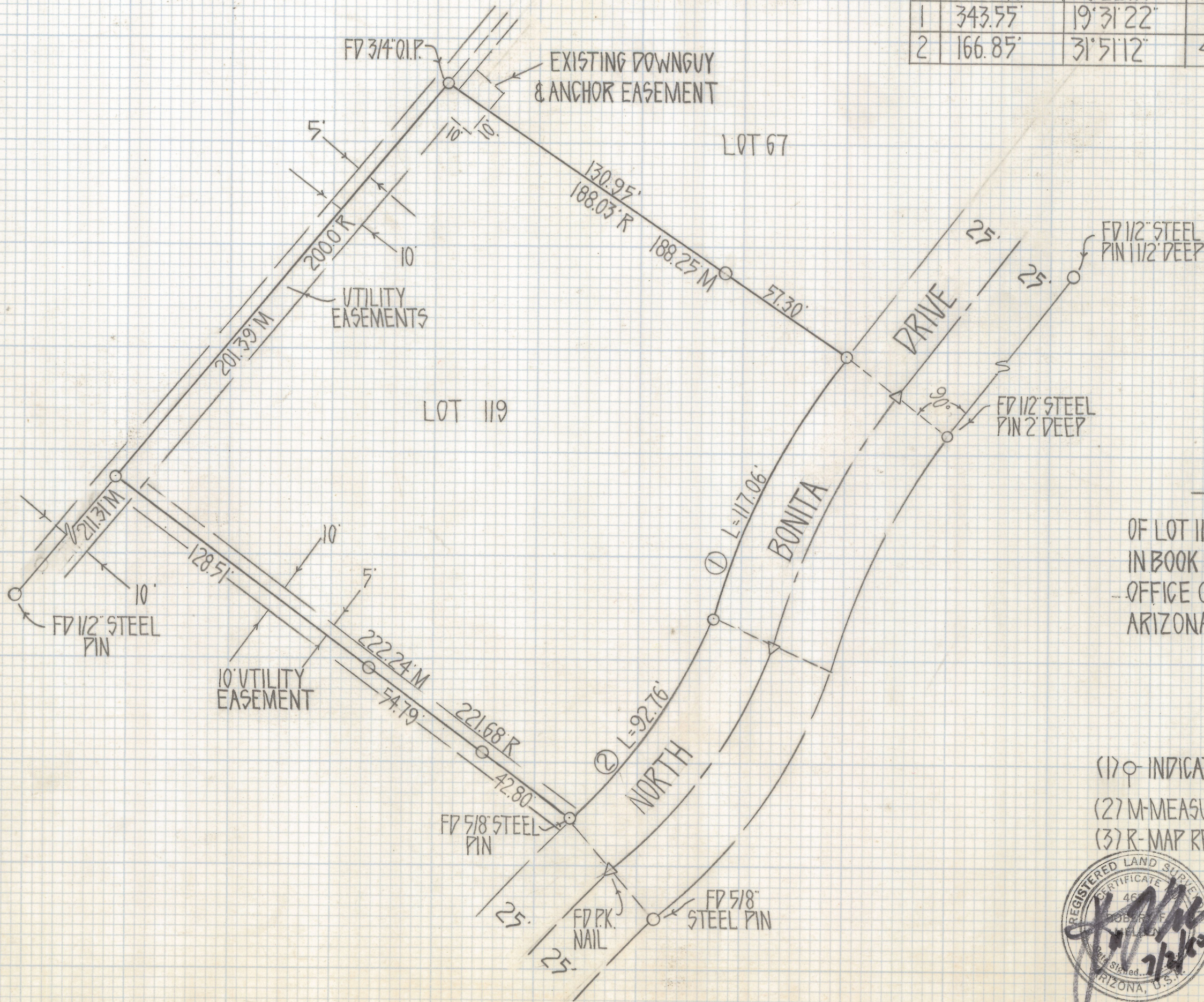
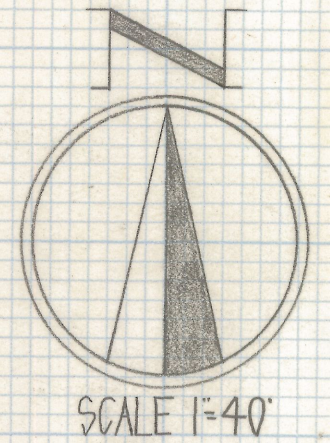


DISCLAIMER:

This unrecorded Record of Survey was donated to the City of Tucson. The City of Tucson provides this data for your personal use "as is." Additionally, the City of Tucson provides this information with the understanding that it is not guaranteed to be accurate, correct or complete and conclusions drawn from such information are the responsibility of the user.

NORTHERN HILLS ESTATES
(BOOK 11 PAGE 45 M&P)

CURVE DATA				
N ^o	RADIUS	DELTA	TANGENT	LENGTH
1	343.55'	19°31'22"	59.10'	117.06'
2	166.85'	31°51'12"	47.61'	92.76'



RESULTS OF SURVEY

OF LOT 119 OF NORTHERN HILLS ESTATES RECORDED
IN BOOK 16 OF MAPS AND PLATS AT PAGE 98 IN THE
OFFICE OF THE PIMA COUNTY RECORDER PIMA COUNTY
ARIZONA

NOTES

- (1) ⊙ INDICATES SET 1/2" PIN MKD L.S. 4680 UNLESS NOTED
- (2) M-MEASURED
- (3) R-MAP RECORD



Z-2018-569
ROBERT F. MELLEN
REGISTERED LAND SURVEYOR
TUCSON, ARIZONA
JOB # 80-77