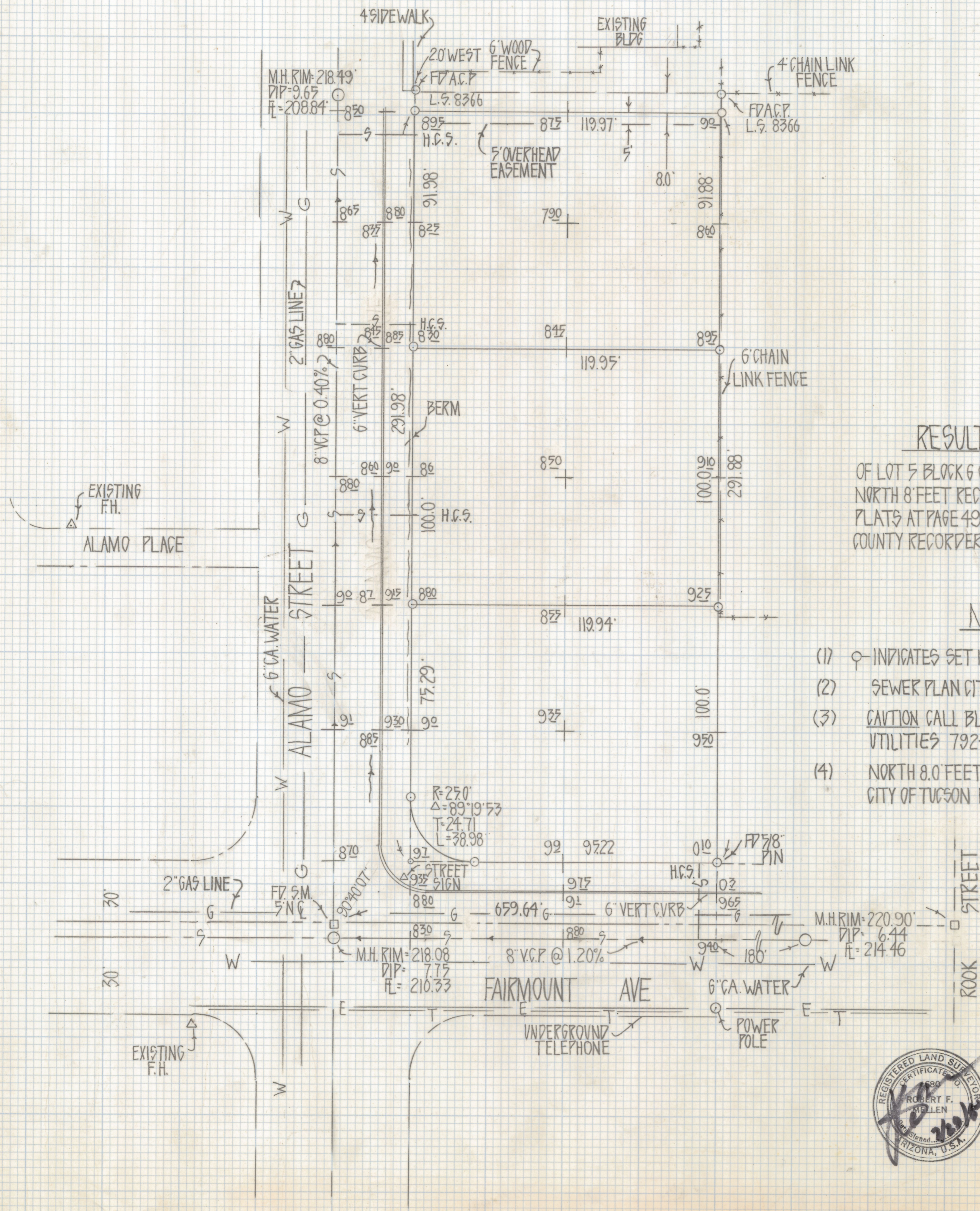
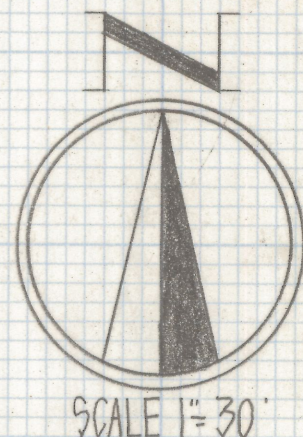


DISCLAIMER:

This unrecorded Record of Survey was donated to the City of Tucson. The City of Tucson provides this data for your personal use "as is." Additionally, the City of Tucson provides this information with the understanding that it is not guaranteed to be accurate, correct or complete and conclusions drawn from such information are the responsibility of the user.



RESULTS OF SURVEY

OF LOT 5 BLOCK 6 CATALINA HEIGHTS EXCEPT THE NORTH 8 FEET RECORDED IN BOOK 4 OF MAPS AND PLATS AT PAGE 49 IN THE OFFICE OF THE PIMA COUNTY RECORDER PIMA COUNTY ARIZONA

NOTES

- (1) ♀ INDICATES SET 1/2" PIN MKD L.S. 4680 UNLESS NOTED
- (2) SEWER PLAN CITY OF TUCSON PLAN N° I-843 B
- (3) CAUTION CALL BLUE STAKE TO VERIFY UNDERGROUND UTILITIES 792-2211
- (4) NORTH 8.0 FEET & SPANDERAL AT S.W. CORNER TO CITY OF TUCSON DOC 4573 PAGE 451



Z-2018-578
 ROBERT F. MELLEN
 REGISTERED LAND SURVEYOR
 TUCSON, ARIZONA
 JOB# 80-89