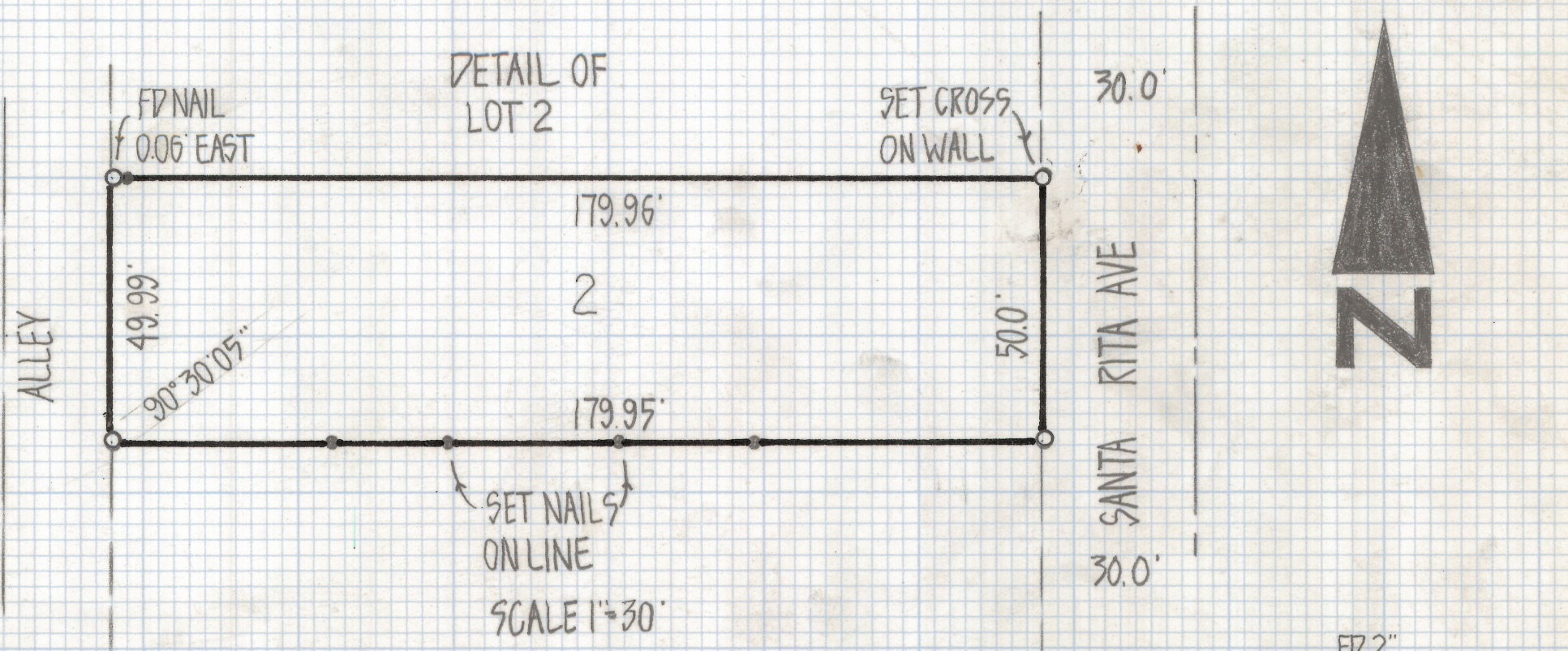


DISCLAIMER:

This unrecorded Record of Survey was donated to the City of Tucson. The City of Tucson provides this data for your personal use "as is." Additionally, the City of Tucson provides this information with the understanding that it is not guaranteed to be accurate, correct or complete and conclusions drawn from such information are the responsibility of the user.

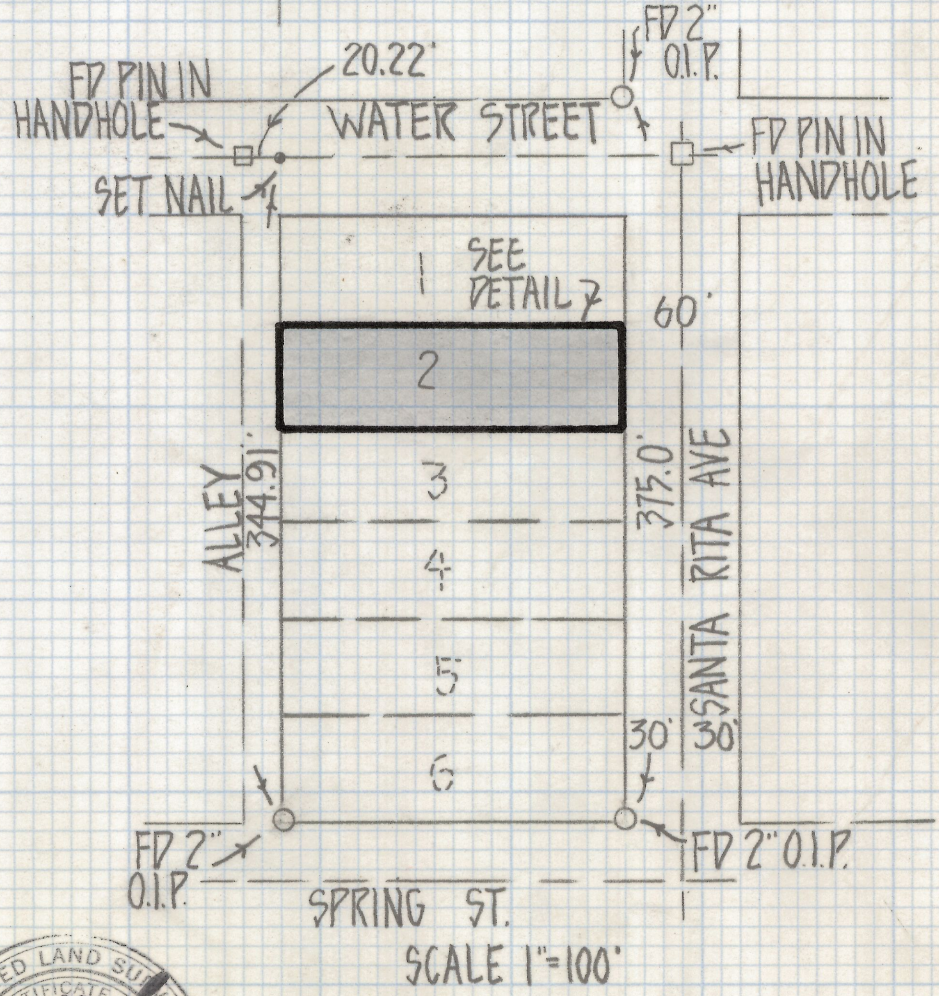


RESULTS OF SURVEY

OF LOT 2 BLOCK 7 FOSTER ADDITION RECORDED
IN BOOK 6 OF MAPS AND PLATS AT PAGE 7 IN THE
OFFICE OF THE PIMA COUNTY RECORDER PIMA
COUNTY ARIZONA

NOTES

- (1) ♀ - INDICATES SET 1/2" STEEL PIN MKD L.S. 4680
UNLESS NOTED
- (2) O.I.P. - OPEN IRON PIPE



ROBERT F MELLEN
REGISTERED LAND SURVEYOR
TUCSON, ARIZONA
JOB # 80-99

Z-2018-586