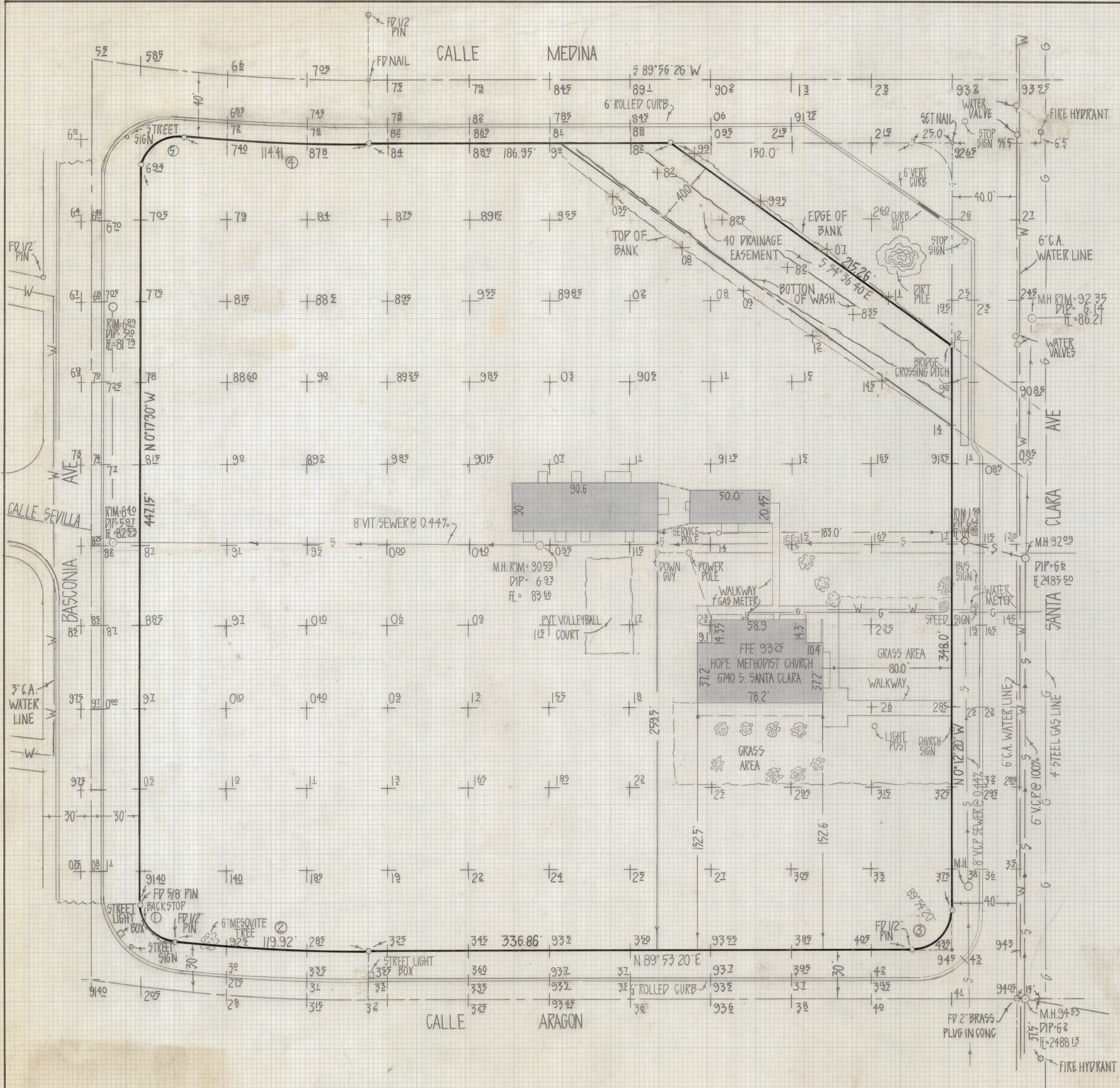
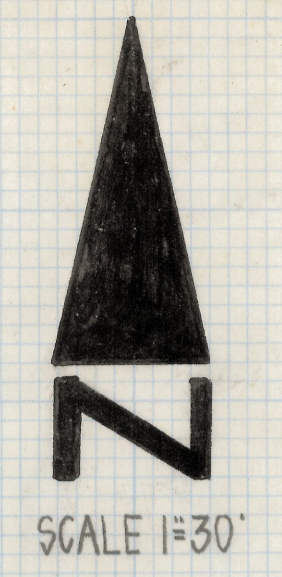


DISCLAIMER:

This unrecorded Record of Survey was donated to the City of Tucson. The City of Tucson provides this data for your personal use "as is." Additionally, the City of Tucson provides this information with the understanding that it is not guaranteed to be accurate, correct or complete and conclusions drawn from such information are the responsibility of the user.



CURVE DATA				
Nº	DELTA	RADIUS	TANGENT	LENGTH
1	81°07'06"	25.88'	22.15'	36.64'
2	5°52'50"	1168.44'	60.01'	119.92'
3	90°05'40"	25.0'	25.04'	39.31'
4	5°36'41"	1168.24'	57.25'	114.41'
5	95°21'52"	25.45'	27.95'	42.36'



RESULTS OF SURVEY
 OF LOT 1 BLOCK 12 MISSION MANOR Nº 3 RECORDED IN BOOK 9 OF
 MAPS AND PLATS AT PAGE 118 IN THE OFFICE OF THE PIMA
 COUNTY RECORDER PIMA COUNTY ARIZONA

- NOTES
- (1) ⊕ INDICATES SET 1/2" PIN MKP L.S. 4680 UNLESS NOTED
 - (2) PAVING PLANS SEE PLAN Nº I-788 SHEET Nº 2 CITY OF TUCSON
 - (3) FIRE HYDRANTS S.E. CORNER OF CALLE ARAGON & SANTA CLARA AND S.E. CORNER OF CALLE MEDINA & SANTA CLARA
 - (4) CAUTION CALL BLUE STAKE TO VERIFY UNDERGROUND UTILITIES CALL 792-2211
 - (5) BASIS OF BEARINGS N 89°53'20"E FOR Q. OF CALLE ARAGON MISSION MANOR Nº 3 BOOK 9 M&P PAGE 118
 - (6) THERE IS A 40' DIMENSIONAL ERROR ON THE NORTH LINE OF BLOCK 12



ROBERT F. MELLEN
 REGISTERED LAND SURVEYOR
 TUCSON, ARIZONA
 JOB# 80-100
 Z-2018-587